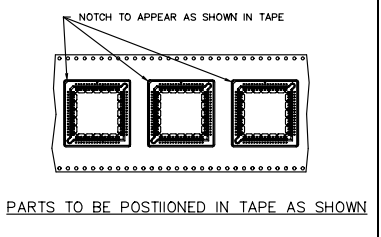
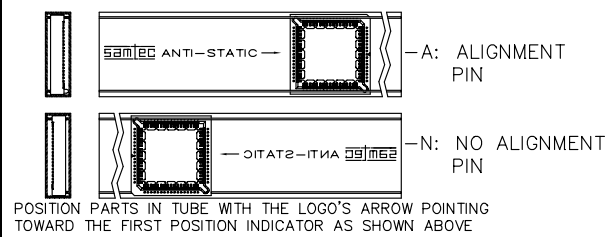
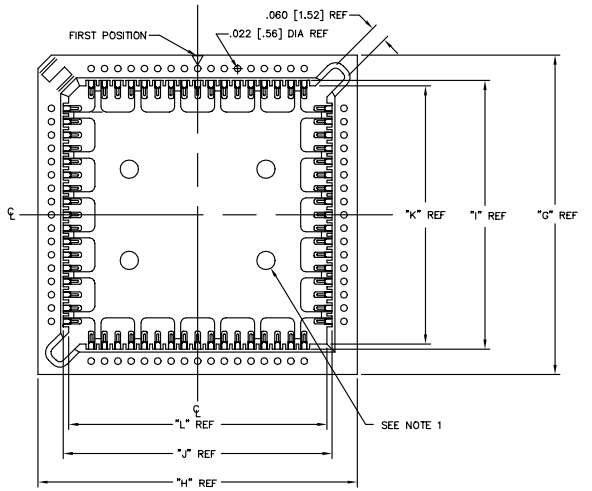
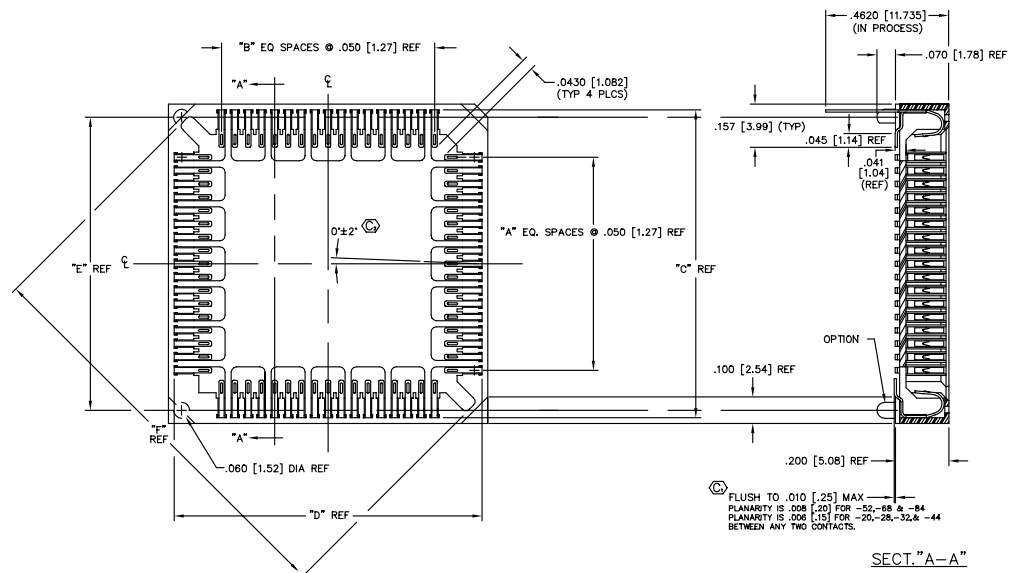


REV. AC



DIMENSIONS ARE IN INCHES UNLESS OTHERWISE NOTED TOLERANCES ARE:		TITLE: PLCC ASM.	DWG NO: PLCC-0XX-X-X-XX
ONE PLACE DECIMALS ± .1 [3]	THREE PLACE DECIMALS ± .005 [1,13]	ANGLES ± 2'	
TWO PLACE DECIMALS ± .01 [3]	FOUR PLACE DECIMALS ± .0020 [0,51]		SHEET 1 OF 1

- PLCC-0XX-X-X-XX
- POSITION SPEC. (SEE TABLE 1 "XX")
- PACKAGING OPTION
BLANK = PACKAGING TUBE (SEE PACKAGE TUBE SPEC.)
-TR = TAPE AND REEL (SEE TAPE & REEL SPECS.)
- PLATING SPEC.
- T: TIN (SEE TABLE 1 "CONTACT")
 - S: SELECTIVE (SEE TABLE 1 "CONTACT")
 - L: LIGHT GOLD SELECTIVE (SEE TABLE 1 "CONTACT")
 - F: FLASH GOLD SELECTIVE (SEE TABLE 1 "CONTACT")
 - H: HEAVY GOLD SELECTIVE (SEE TABLE 1 "CONTACT")
 - TL: TIN LEAD (SEE TABLE 1 "CONTACT")
 - SM: HEAVY GOLD SELECTIVE, MATTE TIN TAIL (SEE TABLE 1 "CONTACT")
 - TM: MATTE TIN (SEE TABLE 1 "CONTACT") (SEE TABLE 1 "CONTACT")
 - LM: LIGHT GOLD SELECTIVE, MATTE TIN TAIL (SEE TABLE 1 "CONTACT")
 - FM: FLASH GOLD SELECTIVE, MATTE TIN TAIL (SEE TABLE 1 "CONTACT")
- OPTION
- A: ALIGNMENT PIN (SPECIFY -A IN BODY SPEC. -X IN TABLE 1)
 - N: NO ALIGNMENT PIN (SPECIFY -N IN BODY SPEC. -X IN TABLE 1)



Do not scale from this print

- NOTES:
- .0400 [1.016] DIA X .030 [7.6] HIGH STANDOFFS ON -32 POSITION ONLY (TYP 4 PLCS)
 - ⊗ REPRESENTS A CRITICAL DIM.

"XX"	BODY SPEC.	TUBE SPEC.	PLUG SPEC.	"A"	"B"	"C"	"D"	"E"	"F"	"G"	"H"	"I"	"J"	"K"	"L"	CONTACT
20	PLCC-20-X	PT-1-24-06-51	TP-13	04	04	.555 [14.10]	.555 [14.10]	.500 [12.70]	.675 [17.15]	.600 [15.24]	.600 [15.24]	.410 [10.41]	.410 [10.41]	.370 [9.40]	.370 [9.40]	C-46-XX
28	PLCC-28-X	PT-1-24-01-51	TP-13	06	06	.655 [16.64]	.655 [16.64]	.600 [15.24]	.818 [20.78]	.700 [17.78]	.700 [17.78]	.510 [12.95]	.510 [12.95]	.470 [11.94]	.470 [11.94]	C-46-XX
32	PLCC-32-X	PT-1-24-01-51	TP-13	08	06	.755 [19.18]	.655 [16.64]	.700 [17.78]	.890 [22.61]	.800 [20.32]	.700 [17.78]	.610 [15.49]	.510 [12.95]	.570 [14.48]	.470 [11.94]	C-46-XX
44	PLCC-44-X	PT-1-24-02-51	TP-13	10	10	.855 [21.72]	.855 [21.72]	.800 [20.32]	1.100 [27.94]	.900 [22.86]	.900 [22.86]	.710 [18.03]	.710 [18.03]	.670 [17.02]	.670 [17.02]	C-46-XX
52	PLCC-52-X	PT-1-24-03-13	TP-13	12	12	.955 [24.26]	.955 [24.26]	.900 [22.86]	1.242 [31.55]	1.000 [27.94]	1.000 [27.94]	.810 [20.57]	.810 [20.57]	.770 [19.56]	.770 [19.56]	C-46-XX
68	PLCC-68-X	PT-1-24-04-51	TP-13	16	16	1.155 [29.34]	1.155 [29.34]	1.100 [27.94]	1.525 [38.74]	1.200 [33.02]	1.200 [33.02]	1.010 [25.65]	1.010 [25.65]	.970 [24.64]	.970 [24.64]	C-46-XX
84	PLCC-84-X	PT-1-24-05-51	TP-25	20	20	1.355 [34.42]	1.355 [34.42]	1.300 [33.02]	1.808 [45.92]	1.400 [35.56]	1.400 [35.56]	1.210 [30.73]	1.210 [30.73]	1.170 [29.72]	1.170 [29.72]	C-46-XX

PROPRIETARY NOTE
THIS DOCUMENT CONTAINS UNCLASSIFIED INFORMATION AND IS NOT TO BE RELEASED TO THE PUBLIC WITHOUT THE WRITTEN AUTHORITY OF SAMTEC INC.

MATERIAL:
CELANESE, VECTRA E130
UL RATED 94V-0,
COLOR: BLACK
25% MAXIMUM REGRIND
CONTACT:
BeCu 172 SHM TEMPER

320 PARK EAST BLVD, NEW ALBANY, INDIANA 47150
PHONE (812) 944-0733, P.O. BOX 1147
CODE 5322

MADE BY: KOLB 5-18-89

PLCC-0XX-X-X-XX
SHEET 1 OF 1