

6

5

4

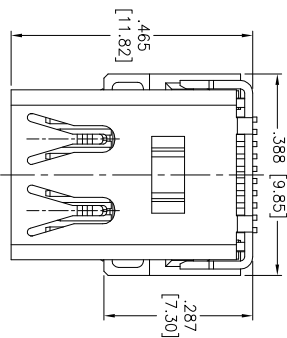
3

2

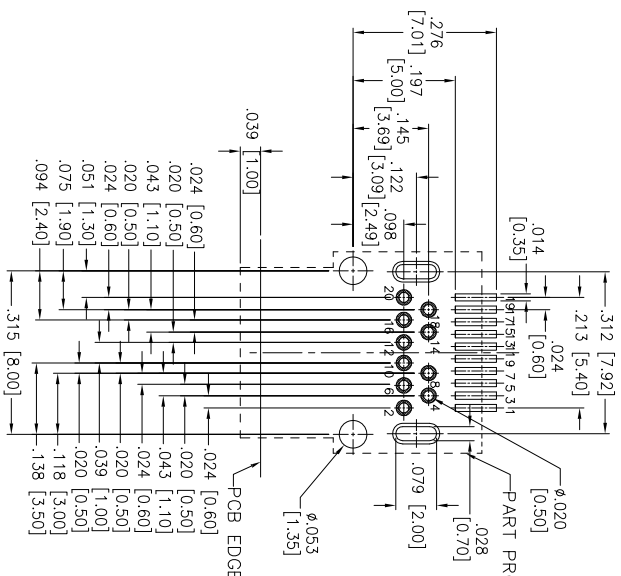
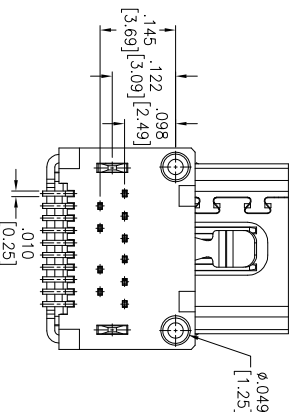
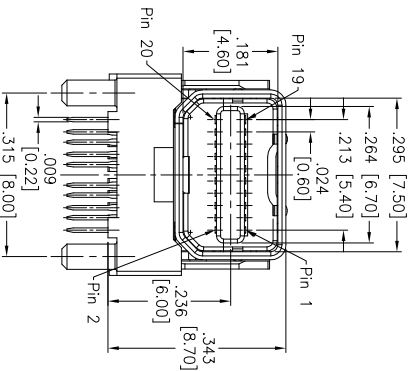
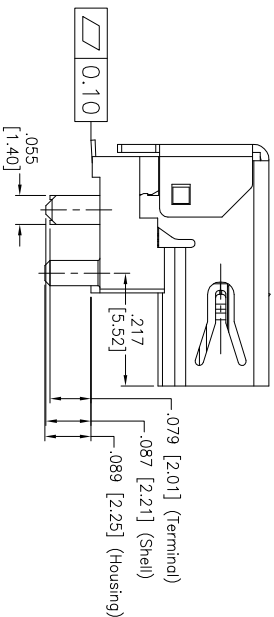
1

APPROVED: _____

DATE: _____ TITLE: _____



Rev	AWO #	Description	Date	Appr
-		RELEASED	10/16/09	
A		REDRAWN	05/18/12	
B		ADDED LAYOUT DIM.	12/14/12	
C		REVISED SPEC.	2/26/15	AY/JAC
D		UPDATED DRAWING	8/19/15	HR/LLL
E		UPDATED SPEC.	7/30/18	AY/TTW
F		UPDATED SPEC.	10/12/18	SS



RECOMMENDED PCB LAYOUT

SPECIFICATIONS:

Material:
Housing: Hi-Temp Thermoplastic, rated UL 94V-0
Insulator color: Black
Contact: Copper Alloy
Shell: Stainless Steel, Nickel plated
Plating:
15u" Gold over Nickel underplate on contact area,
Matte Tin over Nickel underplate on solder tails
Electrical:
Voltage rating: 40 V
Current rating: 0.5 A
Contact Resistance: 30 mΩ max.
Insulation Resistance: 100 Mohms min. @ 500 VDC (unmated)
10 Mohms min. @ 150 VDC (mated)
Dielectric Withstanding Voltage: 300V AC for 1 minute
Mechanical:
Insertion force: 44.1N Max
Extraction force: 9.8N Min, 39.2N Max
Durability: 10,000 cycles
Environmental:
Lead free, RoHS compliant.

A

A

B

B

C

C

D

D

UNLESS OTHERWISE SPECIFIED
ALL DIMENSIONS ARE INCHES [MM]
TOLERANCES: EXCEPT AS NOTED
INCHES HOLEES ±.10
X ±.10
.XX ±.020
.XXX ±.015
XXX ±.010
DATE 10/16/09

ADAM TECH 909 Railway Avenue,
Union, NJ 07083
Phone: 908-687-5000
Fax: 908-687-5710

INTERCONNECTS

ADAM TECH 909 Railway Avenue,
Union, NJ 07083
Phone: 908-687-5000
Fax: 908-687-5710

**MINI DISPLAY PORT RECEPTACLE, RA,
DIP TYPE, 20 PIN, 15u" GOLD PLATED**

SIZE PART NO. MDDP-C-S-RA
REF: S00015C SCALE: NTS SHEET 1 OF 1

UNLESS OTHERWISE SPECIFIED
ALL DIMENSIONS ARE INCHES [MM]
TOLERANCES: EXCEPT AS NOTED
INCHES HOLEES ±.10
X ±.10
.XX ±.020
.XXX ±.015
XXX ±.010
DATE 10/16/09

ADAM TECH 909 Railway Avenue,
Union, NJ 07083
Phone: 908-687-5000
Fax: 908-687-5710

INTERCONNECTS

ADAM TECH 909 Railway Avenue,
Union, NJ 07083
Phone: 908-687-5000
Fax: 908-687-5710

**MINI DISPLAY PORT RECEPTACLE, RA,
DIP TYPE, 20 PIN, 15u" GOLD PLATED**

SIZE PART NO. MDDP-C-S-RA
REF: S00015C SCALE: NTS SHEET 1 OF 1



6

5

4

3

2

1