

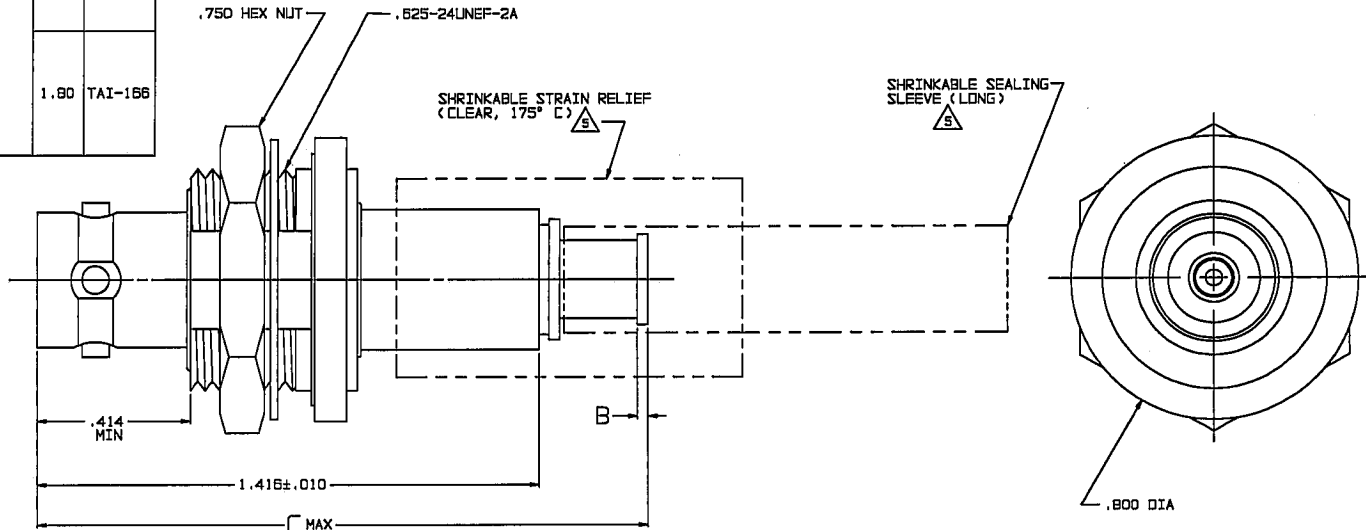
RED INDICATES ORIGINAL

| | | | | | | | |
|---------------|---|-------|--|-----------|-----------|---------|------|
| DWG SIZE C | DATA CONTAINED IN THIS DOCUMENT IS PROPRIETARY TO TROMPETER ELECTRONICS, INC. AND SHALL NOT BE DISCLOSED, COPIED OR USED FOR PROCUREMENT OR MANUFACTURE WITHOUT EXPRESS WRITTEN PERMISSION. | | | REVISIONS | | 3-0203 | SH 1 |
| | REV | ED | DESCRIPTION | DWN | APPROVED | DATE | |
| | P | 12083 | -306 TAI-218 WAS TAI-168; ADDED -308 & -309; SEE ECO | DKC | <i>FW</i> | 8/12/97 | |

| DASH NO | CABLES ACCOMMODATED | A HEX | B DIM | C MAX | ASSEMBLE PER |
|---------|---------------------|-------|---------|-------|--------------|
| -201 | M17/178-00002 | .344 | .030 | 1.80 | TAI-166 |
| -202 | TWC-78-1 | | | | |
| -203 | TWC-124-1A | | | | |
| -204 | 10802, RAYCHEM | | | | |
| -205 | TWAC-78-1F2 | | | | |
| -206 | 7826D0130, RAYCHEM | | | | |
| -207 | 83310, BELDEN | | | | |
| -208 | 202-3927, MICRRODOT | | | | |
| -209 | 202-3942, MICRRODOT | | | | |
| -210 | 8451, BELDEN | | | | |
| -211 | 202-3934, MICRRODOT | 1.55 | TAI-138 | | |
| -212 | 2524E0114, RAYCHEM | | | | |
| -213 | TWC-78-2 | | | | |
| -214 | TWC-124-2 | | | | |
| -215 | BL982, TIMES | 1.80 | TAI-166 | | |
| -216 | BL 1242, TIMES | | | | |
| -217 | GC875M24H, GRUMMAN | | | | |
| -218 | EDP221888, RAYCHEM | | | | |
| -219 | 2526D1114, RAYCHEM | | | | |
| -220 | GC875RRI, GRUMMAN | | | | |
| -221 | 10614, RAYCHEM | | | | |
| -222 | 10613, RAYCHEM | | | | |
| -223 | HMS2-1149, HUGHES | | | | |

| DASH NO | CABLES ACCOMMODATED | A HEX | B DIM | C MAX | ASSEMBLE PER |
|---------|---------------------------|-------|-------|-------|--------------|
| -301 | GC875GC1, GRUMMAN | .344 | .030 | 1.80 | TAI-168 |
| -302 | GC875GB1, GRUMMAN | | | | |
| -303 | 7528A5314, RAYCHEM | | | | |
| -304 | | | | | |
| -305 | M17/177-00001, THERMATICS | | | | |
| -306 | TRC-50-2 | | | | |
| -307 | M17/134-00002 | | | | |
| -308 | TRC-75-1 | | | | |
| -309 | TRC-75-2 | | | | |
| -309 | TRC-50-1 | | | | |

| INCH | MM |
|-------|-------|
| .005 | 0.13 |
| .010 | 0.25 |
| .030 | 0.76 |
| .140 | 3.56 |
| .281 | 7.14 |
| .284 | 7.21 |
| .344 | 8.74 |
| .414 | 10.52 |
| .830 | 16.00 |
| .835 | 16.13 |
| .750 | 19.05 |
| .800 | 20.32 |
| 1.00 | 25.40 |
| 1.25 | 31.75 |
| 1.416 | 35.97 |
| 1.55 | 39.37 |
| 1.75 | 44.45 |
| 1.80 | 45.72 |



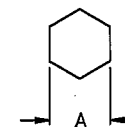
-202 SHOWN

1 SHRINKABLE STRAIN RELIEF AND/OR SHRINKABLE SEALING SLEEVE SUPPLIED LOOSE AS FOLLOWS:

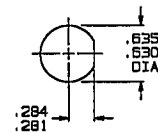
- CABLE GROUPS -201 THROUGH -210, -217 THROUGH -303, -305, -307 & -309
1 SHRINKABLE STRAIN RELIEF (1.00 LONG)
1 SHRINKABLE SEALING SLEEVE (1.25 LONG)
- CABLE GROUPS -211 THROUGH -216 AND -306 & -309
1 SHRINKABLE STRAIN RELIEF (1.75 LONG)

- MAX PANEL THK .140
- 4-LUG CONCENTRIC TWINAX/TRIAX TRB, FULL CRIMP INSULATED BULKHEAD MOUNT CABLE RECEPTACLE
- FINISH: TFS-1A (NICKEL)
- ALL DIM ARE IN INCHES

- EXAMPLE OF COMPLETE MODEL NO:
BJ74CFL-201
BASIC MODEL NO. [] CABLE GROUP DASH NO []
- EXAMPLE OF COMPLETE PART NO:
3-0203-201
BASIC PART NO. [] CABLE GROUP DASH NO []



RECOMMENDED
HEX CRIMP
SCALE: 2/1



RECOMMENDED
PANEL CUTOUT
SCALE: 1/1

| QTY | DESCRIPTION | PART NUMBER | ITEM |
|---|------------------------------------|---------------|--------------|
| TOL UNLESS SPECIFIED .XX ± .XXX ± .005 XXX ± ANGLES | TROMPETER ELECTRONICS, INC. | BJ74CFL | |
| DWN DKC B-1-87 | MATERIAL CODE IDENT | DRAWING NO. | REV |
| CHK <i>DW</i> <i>B-8-97</i> | 14949 | 3-0203 | P |
| ENGR | | | |
| APPR <i>FW</i> <i>8/12/97</i> | SCALE 4/1 | DATE 11/11/88 | SHEET 1 OF 2 |

NEXT ASSY