

DO NOT SCALE FROM THIS PRINT

IMPEDENCE  
7:75 OHM

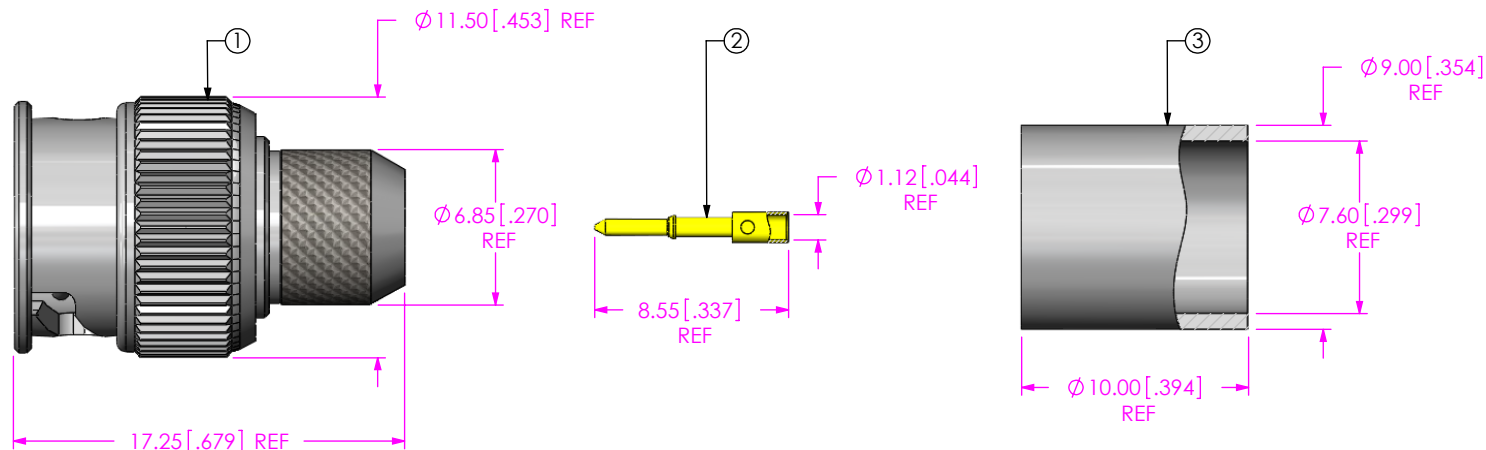
GENDER  
-P: PLUG

TYPE  
-C: CABLE

TERMINATION  
-CA6: CCA-T694A OR CCA-6 CABLE

ORIENTATION  
-ST: STRAIGHT

PLATING SPECIFICATION  
-HN: HEAVY GOLD / NICKEL  
30µ" Au / 50µ" Ni MIN ON PIN  
100µ" Ni MIN ON OUTER CONTACT  
-GN: GOLD / NICKEL  
10µ" Au / 50µ" Ni MIN ON PIN  
100µ" Ni MIN ON OUTER CONTACT  
(SEE TABLE 1)



**TABLE 1**

ITEM	COMPONENT	-HN	-GN
1	SUB ASSEMBLY	SUB-MBNC7-P-C-N-ST-CA6	
2	PIN	MBNC7-P-C-H-ST-CA6-PIN	MBNC7-P-C-G-ST-CA6-PIN
3	FERRULE	BNC-FER-001-N	

NOTES:

- ① REPRESENTS A CRITICAL DIMENSION.
- CENTER CONTACT PUSHOUT FORCE: 17.8 N [4 LB] MIN.
- NOTE DELETED.
- PRODUCT TO BE PACKAGED PER PACKAGING STANDARD CO-HD-WI-3040-M.
- NOTE DELETED.
- NOTE DELETED.
- NOTE DELETED.

UNLESS OTHERWISE SPECIFIED, DIMENSIONS ARE IN MILLIMETERS [INCHES]. TOLERANCES ARE:

DECIMALS ANGLES  
.X:  $\pm 0.3$  [.01] 5°  
.XX:  $\pm 0.13$  [.005]  
.XXX:  $\pm 0.051$  [.0020]

PROPRIETARY NOTE

THIS DOCUMENT CONTAINS INFORMATION CONFIDENTIAL AND PROPRIETARY TO SAMTEC, INC. AND SHALL NOT BE REPRODUCED OR TRANSFERRED TO OTHER DOCUMENTS OR DISCLOSED TO OTHERS OR USED FOR ANY PURPOSE OTHER THAN THAT WHICH IT WAS OBTAINED WITHOUT THE EXPRESSED WRITTEN CONSENT OF SAMTEC, INC.

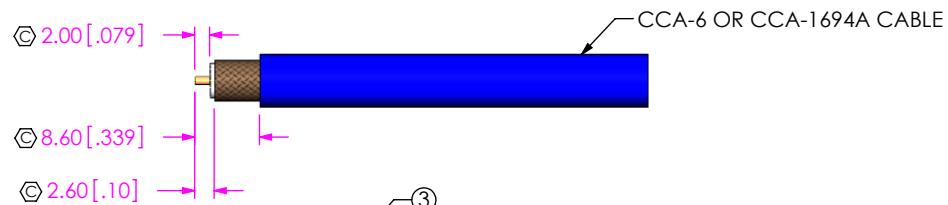
MATERIAL: DO NOT SCALE DRAWING SHEET SCALE: 3:1

SHELL, COUPLING NUT, FERRULE: BRASS  
SPRING: STAINLESS STEEL  
CONTACT: BRASS  
DIELECTRIC: PTFE  
GASKET: SILICONE

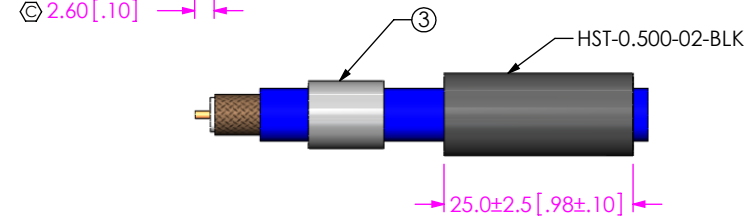


520 PARK EAST BLVD., NEW ALBANY, IN 47150  
PHONE: 812-944-6733 FAX: 812-948-5047  
e-Mail info@SAMTEC.com code 55322

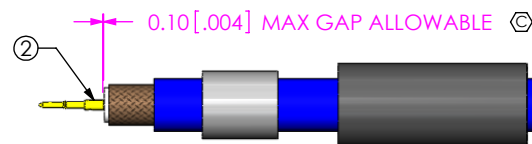
DESCRIPTION:  
TRUE 75 OHM, MBNC ST PLUG FOR RG6  
DWG. NO.  
**MBNC7-P-C-XX-ST-CA6**  
BY: TALON Z 03/29/2010 SHEET 1 OF 2



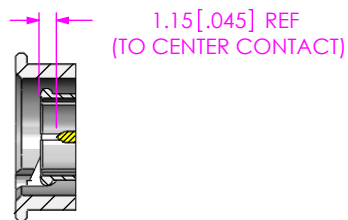
IN-PROCESS 1  
STRIP AND TIN INNER CONDUCTOR



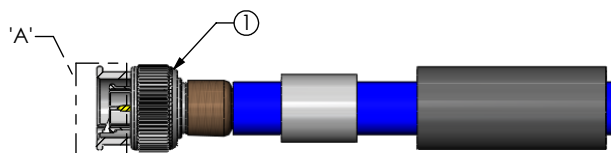
IN-PROCESS 2  
ADD HEAT SHRINK TUBE AND FERRULE



IN-PROCESS 3  
SOLDER SIGNAL PIN

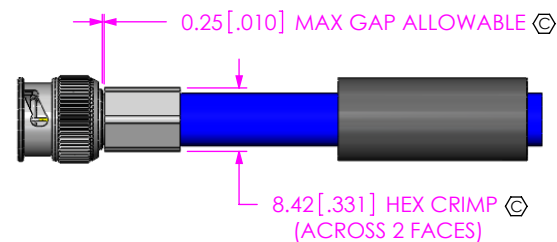


DETAIL 'A'  
SCALE 2:1



IN-PROCESS 4  
FLARE SHIELD, ADD SUB ASSEMBLY

IN-PROCESS 5  
"CRIMP FERRULE"  
(USE .324" HEX DIE)



IN-PROCESS 6  
APPLY HEAT SHRINK TUBE



PROPRIETARY NOTE

THIS DOCUMENT CONTAINS INFORMATION CONFIDENTIAL AND PROPRIETARY TO SAMTEC, INC. AND SHALL NOT BE REPRODUCED OR TRANSFERRED TO OTHER DOCUMENTS OR DISCLOSED TO OTHERS OR USED FOR ANY PURPOSE OTHER THAN THAT WHICH IT WAS OBTAINED WITHOUT THE EXPRESSED WRITTEN CONSENT OF SAMTEC, INC.

DO NOT SCALE DRAWING

SHEET SCALE: 1:1



520 PARK EAST BLVD., NEW ALBANY, IN 47150  
PHONE: 812-944-6733 FAX: 812-948-5047  
e-Mail info@SAMTEC.com code 55322

DESCRIPTION:  
TRUE 75 OHM, MBNC ST PLUG FOR RG6

DWG. NO.  
MBNC7-P-C-XX-ST-CA6

BY: TALON Z 03/29/2010 SHEET 2 OF 2