



The SMC series are screw coupling miniature coaxial connectors which are produced according to the specifications of MIL-C-39012, IEC 169-9 and CECC 22140. They have the characteristics of light weight, small size and vibration-proof, are especially suitable for connection with RF coaxial cables in electronic equipment and instrument.

TECHNICAL CHARACTERISTICS

Environmental

Temperature range	-65~+165°C
-------------------	------------

Electrical Characteristics

Characteristic impedance	50Ω
Working voltage	250V
Frequency range	0-10GHz
Dielectric withstanding voltage	750V
Contact resistance	Center contact ≤ 6mΩ , Outer contact: ≤ 1mΩ
Insulation resistance	≥ 1000MΩ
VSWR	straight
	right angled
	≤ 1.25
	≤ 1.35

Material and Plating

Body	Brass, gold/nickel plated
Male center contacts	Brass, gold plated
Female center contacts	Beryllium copper, gold plated
Insulators	PTFE
Crimp ferrules	Copper alloy, gold or nickel plated

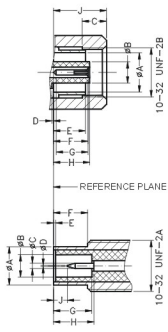
Mechanical Characteristics

Durability	500 cycles
------------	------------

INTERFACE MATING DIMENSIONS

Letter	JACK (mm)	
	Minimum	Maximum
A	3.73	3.81
B	2.00	2.06
C	2.79	-
D	0.00	0.30
E	-	3.10
F	3.05	3.40
G	2.79	-
H	3.15	3.40
J	-	5.92

Letter	PLUG (mm)	
	Minimum	Maximum
A	3.63	3.71
B	2.08	2.16
C	0.48	0.53
D	-	0.25
E	0.00	0.30
F	3.12	3.38
G	3.40	3.66
H	3.40	3.76
J	0.61	-



JACK

PLUG

1. SEMI-RIGID, SEMI-FLEXIBLE CABLE CONNECTORS

Straight Cable Plug, M08



Part Number	GB Type	Cable Group	Remarks
-------------	---------	-------------	---------

SMC1211001	SMC-KB2	085	A=2.2, B=3.0
SMC1211002	SMC-KB3	141	A=3.6, B=4.6

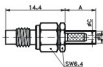
Right Angle Cable Plug, M09



SMC2211001	SMC-KWB2	085	A=2.2, B=3.0
SMC2211002	SMC-KWB3	141	A=3.6, B=4.6

2. FLEXIBLE CABLE CONNECTORS

Straight Cable Jack, MD5



Part Number	GB Type	Cable Group	Remarks
SMC1112001	SMC-J2	2/50S	A=7.5, B=2.5, C=1.0
SMC1112002	SMC-J2.5	2.6/50S	A=9.5, B=2.8, C=1.6
SMC1112003	SMC-J2.5D	2.6/50D	A=9.5, B=3.4, C=1.6
SMC1112004	SMC-J3	3/50S	A=9.5, B=3.1, C=1.6

Right Angle Cable Jack, MD4



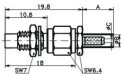
SMC2112001	SMC-JW2.5	2.6/50S	A=16.9, B=2.8, C=1.6
SMC2112002	SMC-JW2.5D	2.6/50D	A=16.9, B=3.4, C=1.6
SMC2112003	SMC-JW3	3/50S	A=16.9, B=3.1, C=1.6

Straight Cable Jack, MD1



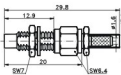
SMC1112005	SMC-J3Y	3/50S	
------------	---------	-------	--

Straight Bulkhead Cable Jack, MD5



SMC1132001	SMC-JY2	2/50S	A=7.5, B=2.5, C=1.0
SMC1132007	SMC-JY2.5	2.6/50S	A=9.5, B=2.8, C=1.6
SMC1132008	SMC-JY2.5D	2.6/50D	A=9.5, B=3.4, C=1.6
SMC1132002	SMC-JY3	3/50S	A=9.5, B=3.1, C=1.6

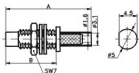
Straight Bulkhead Cable Jack, MD5



SMC1132003	SMC-JY3A	3/50S	
------------	----------	-------	--

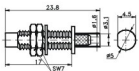
2. FLEXIBLE CABLE CONNECTORS

Straight Bulkhead Cable Jack, MD1



Part Number	GB Type	Cable Group	Remarks
SMC1132004	SMC-JY3AY	3/50S	A=22.8, B=12.8
SMC1132005	SMC-JY3BY	3/50S	A=20.6, B=13.8

Straight Bulkhead Cable Jack, MD1



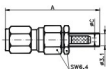
SMC1132006	SMC-JY3CY	3/50S	
------------	-----------	-------	--

Right Angle Cable Plug, MD4



SMC2212001	SMC-KW2	2/50S	A=14.9, B=2.5, C=1.0
SMC2212002	SMC-KW2.5	2.6/50S	A=16.9, B=2.8, C=1.6
SMC2212004	SMC-KW2.5D	2.6/50D	A=16.9, B=3.4, C=1.6
SMC2212003	SMC-KW3	3/50S	A=16.4, B=3.1, C=1.6

Straight Cable Plug, MD6



SMC1212002	SMC-K2	2/50S	A=24, B=2.5, C=1.0
SMC1212003	SMC-K2.5	2.6/50S	A=28, B=2.8, C=1.6
SMC1212004	SMC-K2.5D	2.6/50D	A=26, B=3.4, C=1.6
SMC1212005	SMC-K3	3/50S	A=25.5, B=3.1, C=1.6

Straight Cable Plug, MD2



SMC1212001	SMC-K3Y	3/50S	
------------	---------	-------	--