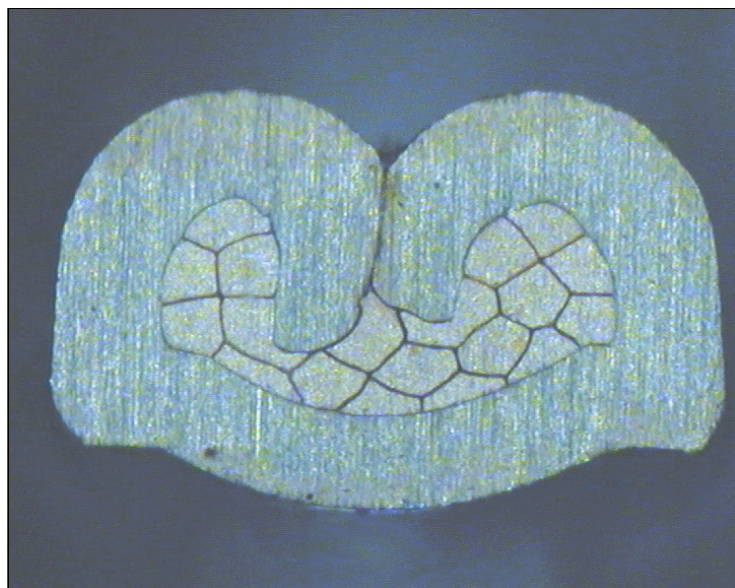




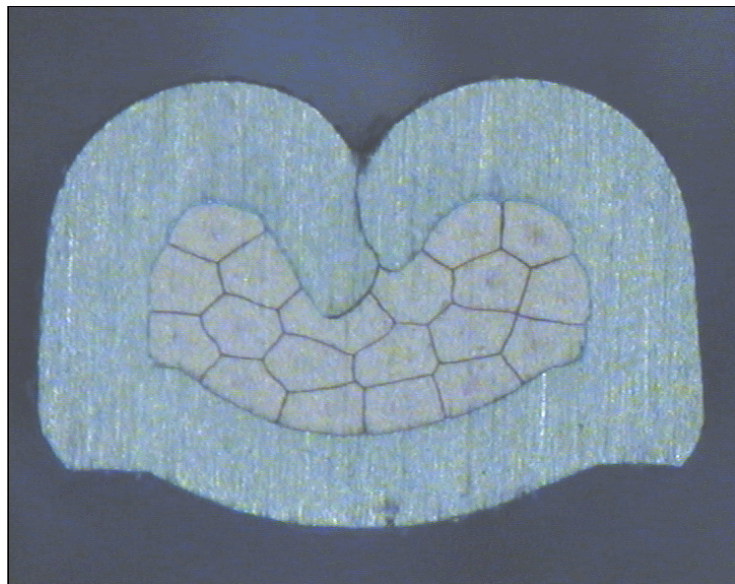
DELPHI PN 13601166



cable:  
 $0,75 \text{ mm}^2 = 19 \times 0,23 \text{ mm}$

crimp height:  
1,30 mm

crimp width:  
2,05 mm



cable:  
 $1,00 \text{ mm}^2 = 19 \times 0,26 \text{ mm}$

crimp height:  
1,40 mm

crimp width:  
2,05 mm