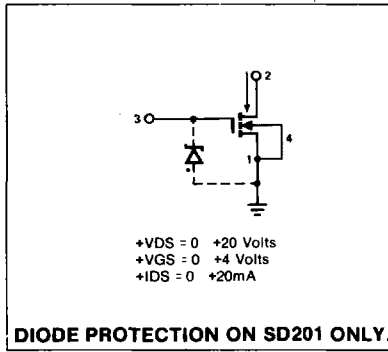


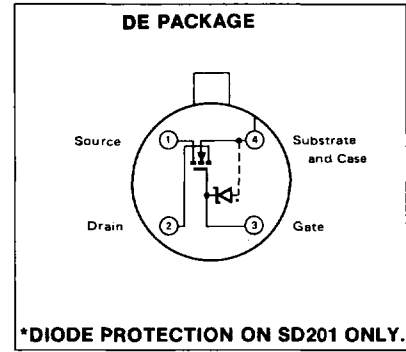
FEATURES

- Ion-implanted for greater control and reliability
- Wide dynamic range
- Positive bias only
- High gain through UHF range - 10dB at 1GHz
- Low noise through UHF range:
SD200 - 4.5dB
SD201 - 5.0dB
- Low input capacitance - 2.4pF
- Low feedback capacitance - 0.20pF
- High drain-to-source voltage - +30V
- High forward transconductance - 15,000umhos

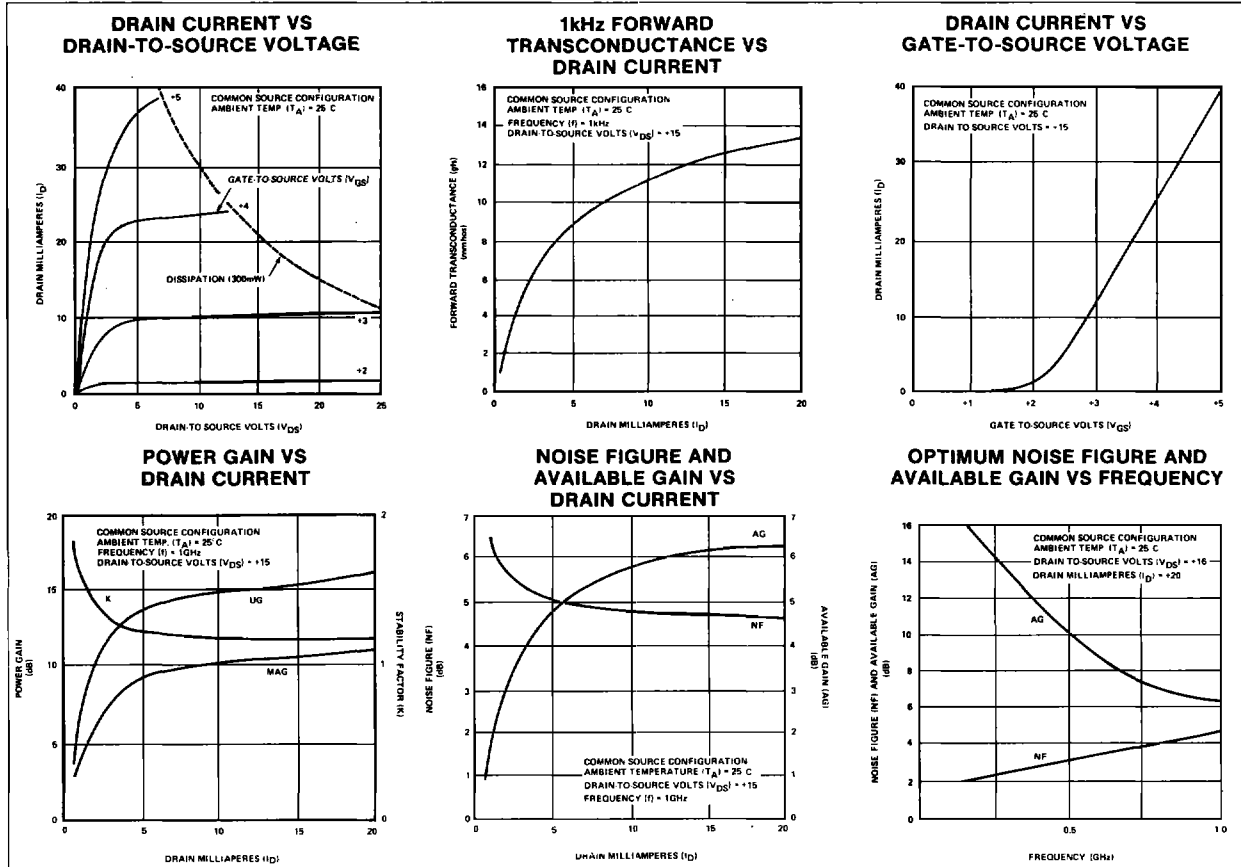
COMMON SOURCE BIAS SCHEME



PIN CONFIGURATION



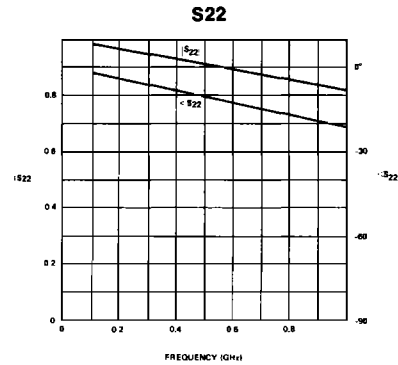
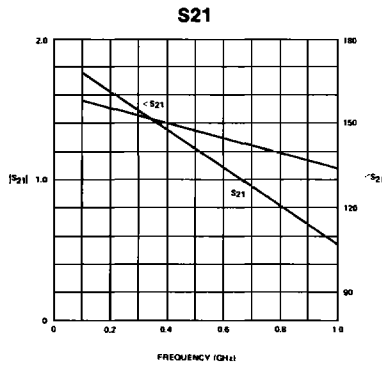
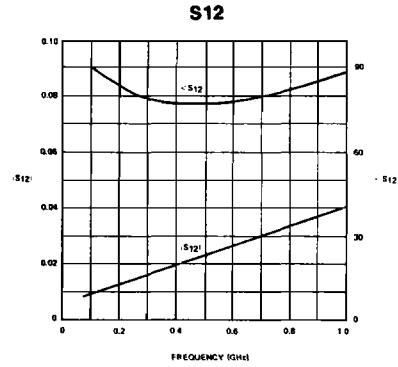
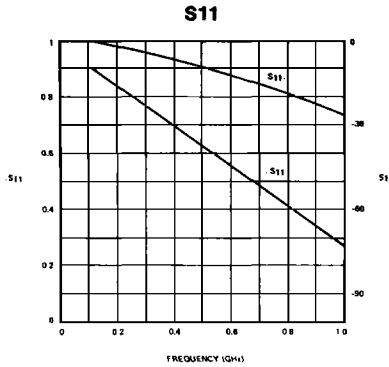
CHARACTERISTIC CURVES



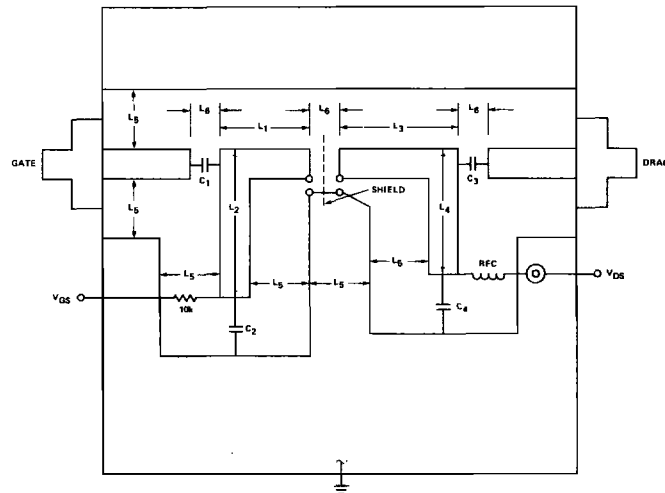
CHARACTERISTIC CURVES (Continued)

"S" PARAMETERS

COMMON SOURCE CONFIGURATION
 AMBIENT TEMPERATURE (TA) = 25°C
 DRAIN MILLIAMPERES (ID) = 20
 DRAIN-TO-SOURCE VOLTS (VDS) = +15



1GHZ NOISE FIGURE AND POWER GAIN TEST FIXTURE



DIELECTRIC IS 1/16" TEFLON-FIBERGLASS (3M-K8004-11)
 ALL MICROSTRIP WIDTH = 0.175"
 L₁ = 0.48" C₁ = C₂ = C₃ = 0.5-10pF
 L₂ = 1.52" Johnson S91
 L₃ = 0.94" C₄ = 1.20pF
 L₄ = 1.28" Johnson S91
 L₅ = 5/16" RFC = 10 TURNS 28 AWG 1/4" DIA.
 L₆ = 1/8" 1000pF BYPASS
 CDRY F74-01.2
 LAUNCHERS - OSM248-2

NOTE SHIELD AND 4 TUNABLE CAPACITORS ON GROUND PLANE SIDE OF AMPLIFIER.

ANALOG