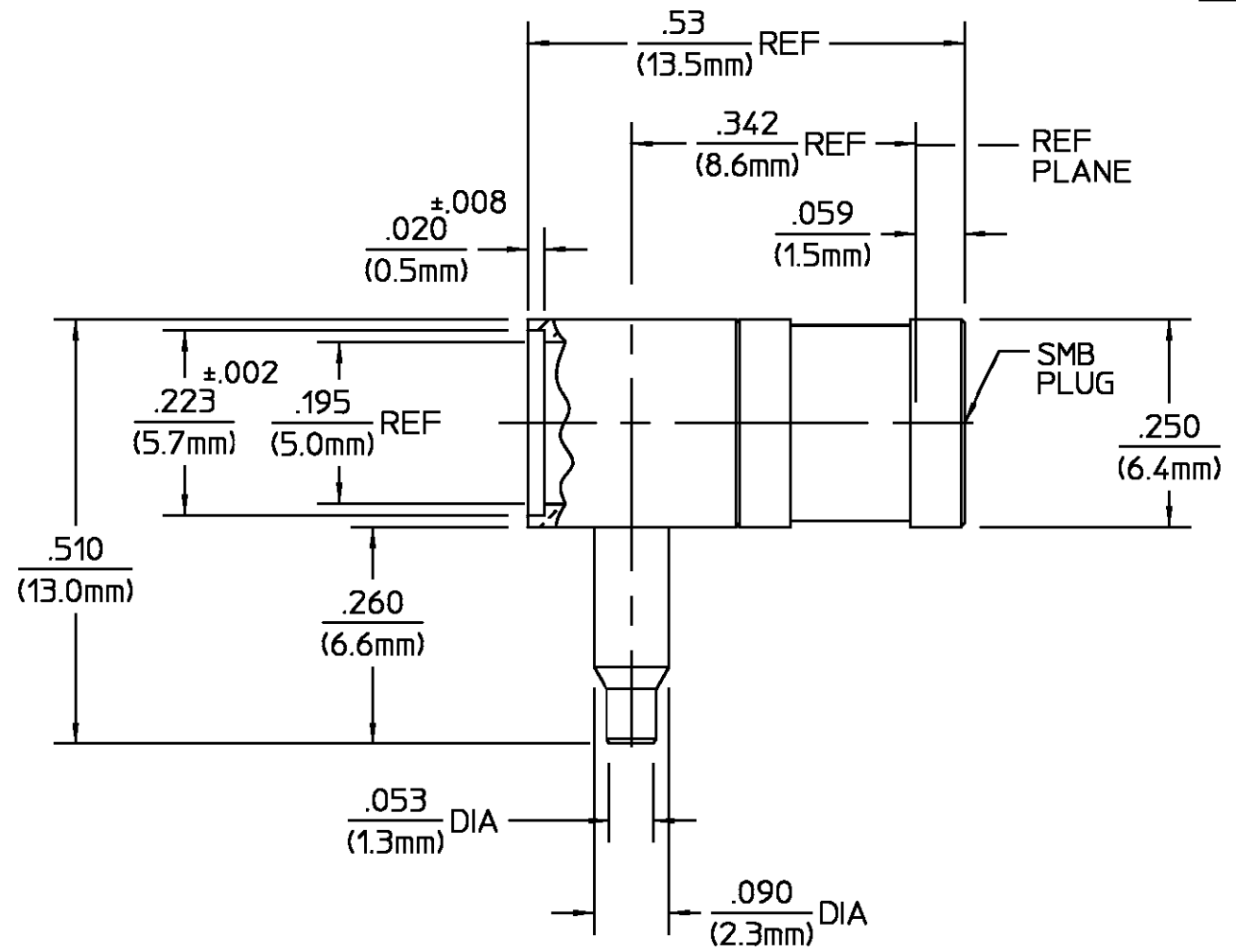


CABLE ENTRY DIAMETER MINIMUM		REVISIONS			
HOUSING	CONTACT SLOT	REV	DESCRIPTION	DATE	APPROVED
.050	.028	010	RELEASED	3/21/95	<i>D. Comella</i>



HOUSING	BRASS PER QQ-B-626 COMP. 360, HALF HARD	GOLD PLATE PER MIL-G-45204
HOUSING SLEEVE	BRASS PER QQ-B-626 COMP. 360, HALF HARD	BRIGHT NICKEL PER QQ-N-290
DIELECTRIC	TFE FLUOROCARBON PER ASTM-D-1457	N/A
CENTER CONTACT	BERYLLIUM COPPER PER ASTM B 196, ALLOY C17300, CONDITION H	GOLD PLATE PER MIL-G-45204
RETAINING RING	BERYLLIUM COPPER PER ASTM B 196, ALLOY C17300, CONDITION H	GOLD PLATE PER MIL-G-45204
COMPONENT	MATERIAL	FINISH

UNLESS OTHERWISE SPECIFIED DIMENSIONS ARE IN INCHES TOLERANCE ON FRAC. DEC. ANGLES ± 1/64 ±.005 ± °	DRAWN BY <i>D. Comella</i>	DATE 3/21/95	AMP Incorporated 140 Fourth Avenue Waltham, MA 02451-7599	
	CHECKED BY			
These drawings and specifications are the property of M/A-COM Incorporated and shall not be reproduced or copied or used in whole or in part as the basis for the manufacture or sale of item(s) without written permission.	APPD BY <i>D. Comella</i>	3/21/95	TITLE SMB SNAP ON RIGHT ANGLE PLUG	
	USE ASS'Y PROCEDURE		SIZE B	CODE IDENT NO. 26805
	NO. AP. N/A		1250-0667-09	REV 010
			SCALE 5:1	SHEET 1 OF 1

DESIGN CONTROL REQUIRED