

REV.	SPECIFICATION	ECN NO.	APPD.

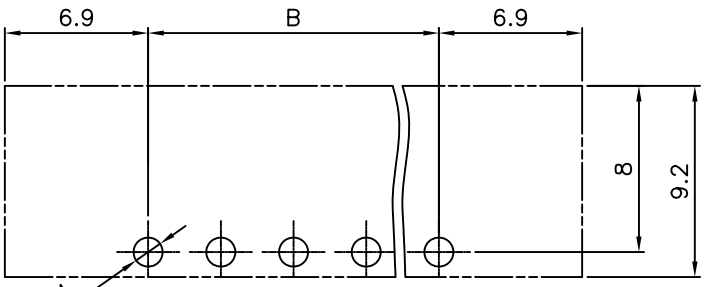
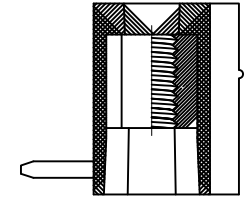
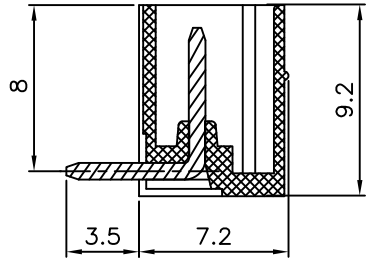
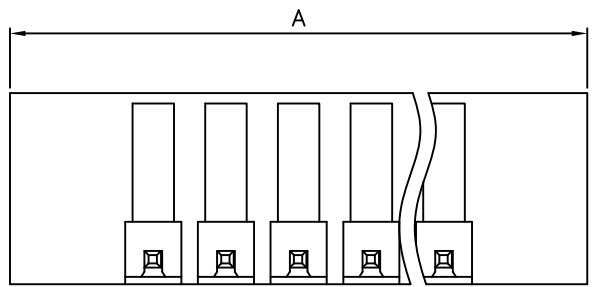
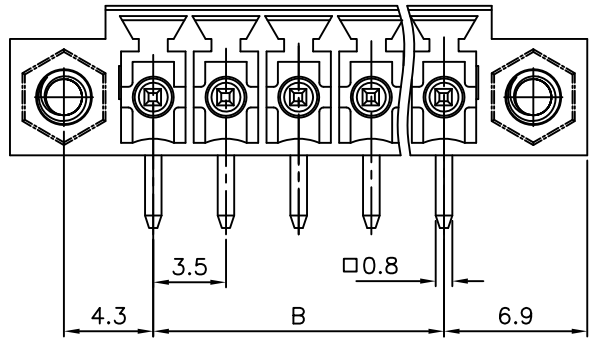
Material:

Housing: PA66 UL94V-0.
 Contact Pin: Brass, Tin Plated.
 Flange NUT: Copper Alloy, M2.5.

Electrical Characteristics:

Voltage Rating: 300V.
 Current Rating: 10A.
 Withstanding Voltage: 1.6KV.
 Operating Temperature: -40°C~+115°C.

***RoHS Compliant**



P.C.Board Layout

8930- Series
C: Pitch 3.5mm
072092 Manufacturing Code
G: Green
CA: With Flange
xx: No. of Positions
R: Right Angle
B: Bulk Package for 2~5Pos.
 Box Package for 6~24Pos.
Y: Grey
U: Blue

Position Dimension	02 Thru 24
A	No. of Positions * 3.5 + 13.8
B	(No. of Positions - 1) * 3.5

Tolerances	Dwg. No.	8930D01007
x = ±0.5	Projection	\oplus ∇
.x = ±0.30	Unit	mm
.xx = ±0.15	Scale	1:1
	Drawn By	VIVIAN06/21'17

Title:
8930 Series
3.5mm Terminal Block
(8300-xxMTR11-03)

OUPIIN
 OUPIIN ELECTRONIC(KUNSHAN) CO., LTD.
 P/N: 8930-C072092GCAxxRB
 SHEET 1/1 Ver.No. A5

①780