

LAN Components

Pulse Transformers SMD

TLA40S Series

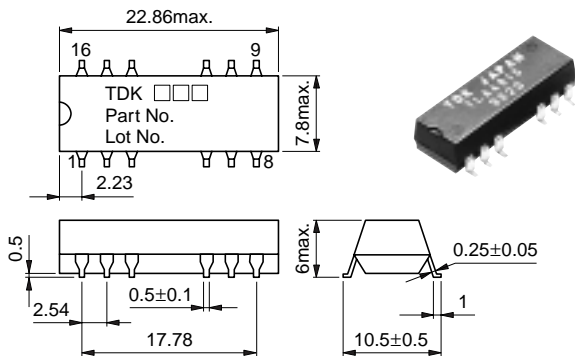
FEATURES

- They are conformed for ISO8802-3 (IEEE802.3) 10BASE-T.
- High quality afforded by transfer molded.
- Employs toroidal ferrite core.
- TLA403S is Built-in common-mode choke coils.

TEMPERATURE RANGES

Operating	0 to +70°C
Storage	-40 to +100°C

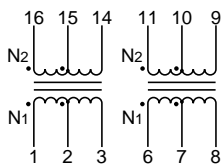
SHAPES AND DIMENSIONS



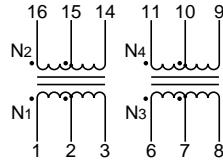
- There is not pins, 4, 5, 12 and 13 in TLA401S. Weight: 2.4g max.
- Dimensions in mm
Tolerance: ±0.25

CIRCUIT DIAGRAMS

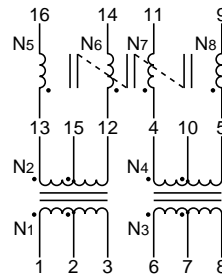
TLA401S



TLA402S



TLA403S



ELECTRICAL CHARACTERISTICS

Part No.	Turns ratio N ₁ :N ₂ , N ₃ :N ₄ N ₅ :N ₆ :N ₇ :N ₈	Inductance (μH)±30%			Leakage inductance (μH)max. N ₁ [N ₂ shorted]	Inter-winding stray capacity (pF)max.	DC resistance (Ω)max.					ET constant (V-μs)min. N ₁	Insulation resistance (MΩ)min. [DC.100V]	Withstand voltage Erms(kV) [50Hz, 60s]
		N ₁	N ₃	N ₅			N ₁	N ₂	N ₃	N ₄	N ₅			
TLA401S	1CT:1CT —:—	200min.	—	—	0.5	15[N ₁ -N ₂]	0.35	0.35	—	—	—	2.6	100	2
TLA402S	1CT:1CT, 1CT:√2CT	200	200	—	0.4	10[N ₃ -N ₄]	0.4	0.4	0.4	0.6	—	2.6	100	2
TLA403S	1CT:1CT 1CT:√2CT, 1:1:1:1	200	200	24min.	0.4 [Terminal No. 14 to 16 shorted]	12 [Terminal No. 6 to 11]	0.4	0.4	0.4	0.6	0.3	2.6	100	1.5

- CT: indicates coil with a center-tap.