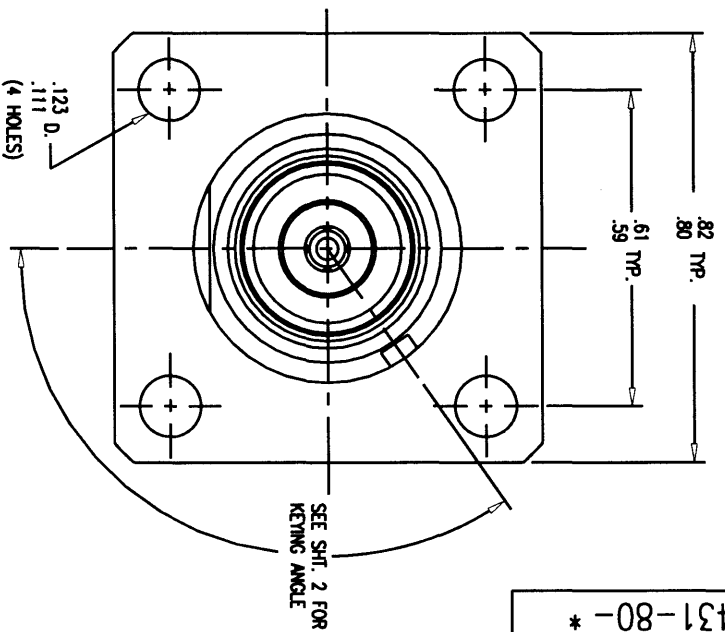
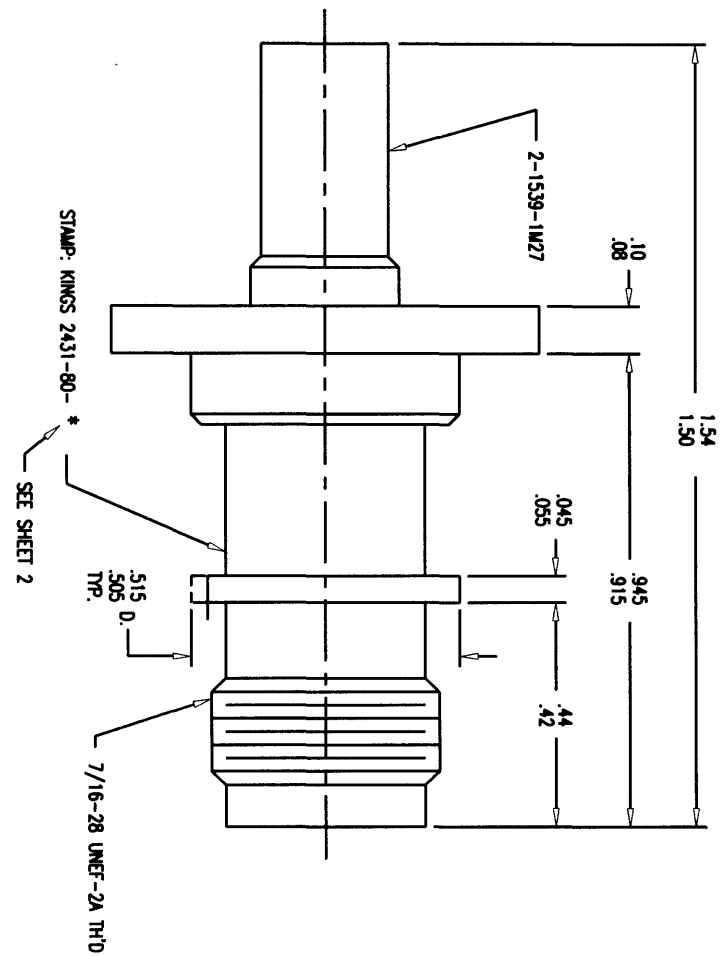


GSD

2431-80-*

REVISIONS

ISSUE	CHANGES
0	ER 34028 KH 08/06/92



NOTES:

1. FOR USE WITH BOEING S280W503-2 & ADAMS RUSSELL FC142 CABLE.
2. FOR CABLING INSTRUCTIONS SEE 3-546-1.
3. FOR CRIMPING USE DIE KTH-2161.
4. INTERFACE PER MIL-STD-348, FIG. 313-2.
5. FOR USE WITH .075 MAX. PANEL.
6. CENTER CONTACT (1-5671-3M9) SUPPLIED UNASSEMBLED.
7. MARK PACKAGE: KINGS 2431-80- * SEE SHEET 2
XXXX (DATE CODE)
8. MATERIALS:
INSULATORS-TEFLON, ASTM-D-1457
K-GRIP SLEEVE-COMMERICAL BRONZE, ALLOY 220
CENTER CONTACT F-BER. COP., ASTM-B-196
ALL OTHER METAL PARTS-BRASS, ASTM-816
9. FINISHES:
CENTER CONTACT-GOLD PLATE PER MIL-G-45204
ALL OTHER METAL PARTS-KINGS TARNISH RESISTANT FINISH (TR-5)
10. ELECTRICAL CHARACTERISTICS:
NOMINAL IMPEDANCE-50 OHMS
FREQUENCY RANGE-DC TO 11 GHZ
WORKING VOLTAGE-500 VRMS

GSD

KAM2136

SCALE 4:1

APPROX SURFACE AREA

WAS: E-17386

USED ON

REF: BOEING

JACK, PANEL, KEYED, TNC

DRWING	DATE
KH	07/17/92
JT	07/21/92

KINGS
ELECTRONICS CO., INC.
TUCUMCOC, NEW YORK 10907

2431-80-*

KINGS00112

GSD

2431-80-*
(SHEET 2 OF 2)

REVISIONS	
ISSUE	CHANGES
0	ER 34028 KH 08/06/92

KINGS PART NO.	KEYING ANGLE
2431-80-1	42°
2431-80-2	54°
2431-80-3	66°
2431-80-4	78°
2431-80-5	90°
2431-80-6	102°
2431-80-7	114°
2431-80-8	126°
2431-80-9	138°
2431-80-10	150°
2431-80-11	162°
2431-80-12	174°
2431-80-13	186°
2431-80-14	198°
2431-80-15	210°
2431-80-16	222°
2431-80-17	234°
2431-80-18	246°
2431-80-19	258°
2431-80-20	270°
2431-80-21	282°
2431-80-22	294°
2431-80-23	306°
2431-80-24	318°

REF: KAM2137

SCALE 1:1

APPROX SURFACE AREA

USED ON

REF:

PART NO. & ANGLE TABLE

DRAWN	KH	DATE	07/17/92
DESIGN	JT	DATE	07/21/92
APPR.		DATE	

GSD

KINGS
ELECTRONICS CO., INC.
TUCKAHOE, NEW YORK 10707

2431-80-*
(SHEET 2 OF 2)