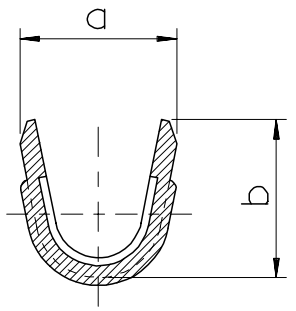


NOTES

- 1. MATERIAL : BRASS , 0.5mm THICKNESS
- 2. PART NO.

	PART NO.	a	b	FINISH	WIRE RANGE	QUANTITY
	35760-7100	3.3	3.3	UNPLATED	0.5~1.5mm <sup>2</sup>	6,000/REEL
	35760-7110			POST PLATED TIN		
	35760-7140			TIN-LEAD		
LEAD FREE	35760-7160			POST PLATED TIN		
	35760-7200	4.2	4.2	UNPLATED	1.5~2.5mm <sup>2</sup>	5,000/REEL
	35760-7210			POST PLATED TIN		
	35760-7240			TIN-LEAD		
LEAD FREE	35760-7260			POST PLATED TIN		



ADDITION OF OPTION EC NO. KOR2006-0064 DRWN: SY.PARK 05/12/16 CHK: BC.YOON 05/12/16 APPR: SH.CHOI 05/12/16	QUALITY SYMBOLS MAJOR = 0 CRITICAL = 0	GENERAL TOLERANCES: (UNLESS SPECIFIED)		SCALE 8:1	DESIGN UNITS <input checked="" type="checkbox"/> mm <input type="checkbox"/> INCH	THIRD ANGLE PROJECTION <input checked="" type="checkbox"/> mm <input type="checkbox"/> INCH	SHT	REV	
			mm	INCH	DRAWN BY & DATE J.S.KANG 93/10/07				
		4 PLACES	±0.	±.	CHECKED BY & DATE B.K.CHOI 93/10/07		TITLE: WIRE SPLICE (S),(SM)		
		3 PLACES	±0.	±.	APPROVED BY & DATE C.W.LEE 93/10/07		MOLEX INCORPORATED KOREA		
		2 PLACES	±0.20	±.	CAD FILENAME S7607100.DGN	MATERIAL NO. SEE TABLE	DRAWING NO. SD-35760-002	SHEET NO. 10F1	
		1 PLACE	±0.30	±.	THIS DRAWING CONTAINS INFORMATION THAT IS PROPRIETARY TO MOLEX INCORPORATED AND SHOULD NOT BE USED WITHOUT WRITTEN PERMISSION.			SIZE B	
		ANGULAR: ± °							
		DRAFT WHERE APPLICABLE MUST REMAIN WITHIN DIMENSIONS							

DO NOT SCALE DRAWING  
DIMENSION IN METRIC

LEAD FREE

TRADE MARK  
SEE TABLE

# Mouser Electronics

Authorized Distributor

Click to View Pricing, Inventory, Delivery & Lifecycle Information:

[Molex:](#)

[35760-7100](#)