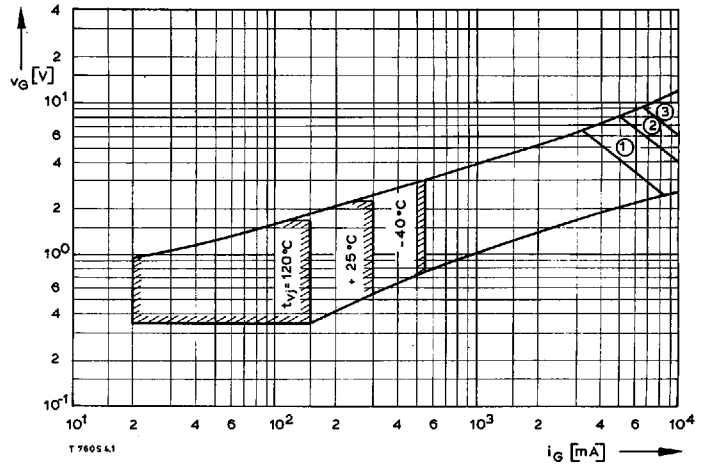
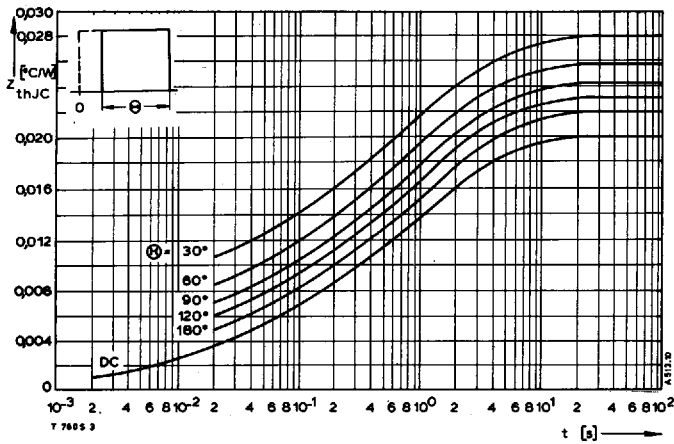


Bild/Fig. 16  
Transienter innerer Wärmewiderstand  $Z_{thJC}$   
Transient thermal impedance, junction to case,  $Z_{thJC}$

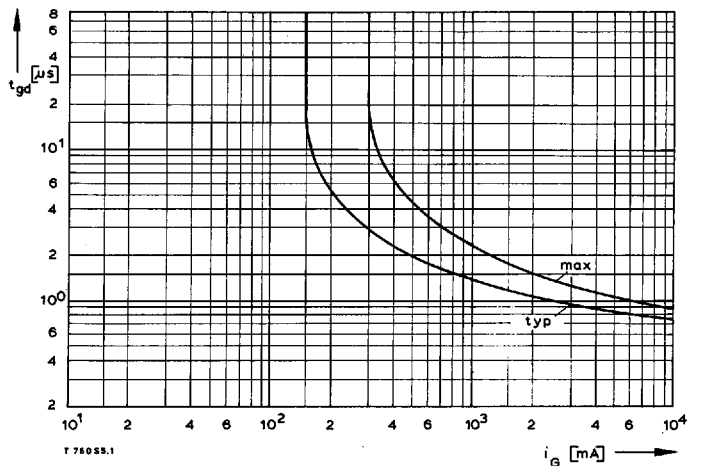


Bild/Fig. 18  
Zündbereich und Spitzensteuerleistung bei  $v_D \geq 6$  V.  
Gate characteristic and peak gate power dissipation at  $v_D \geq 6$  V.

Parameter:	1	2	3
Steuerimpulsdauer/Pulse duration $t_g$ [ms]	10	1	0,5
Höchstzulässige Spitzensteuerleistung/Maximum allowable peak gate power [W]	20	40	60



Bild/Fig. 17  
Transienter innerer Wärmewiderstand  $Z_{thJC}$  bei trapezförmigem Stromverlauf.  
Transient thermal impedance, junction to case,  $Z_{thJC}$



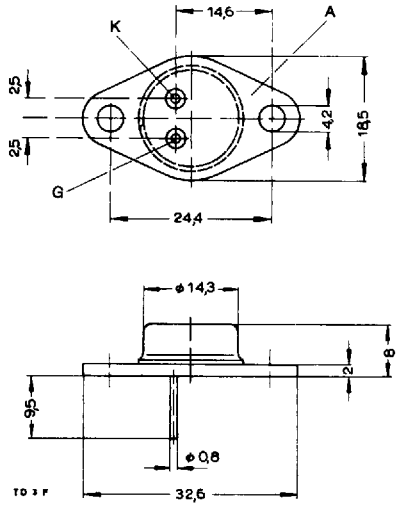
Bild/Fig. 19  
Zündverzögerung  $t_{gd}$   
Gate controlled delay time  $t_{gd}$

Tabelle 1 – Größen des thermischen Ersatzschaltbildes, Konstantstrom

	i	1	2	3	4	5	6	7
$Z_{thJC}$	$R_{th1}$ [°C/W]	0,00114	0,00224	0,00487	0,00749	0,00426		
	$\tau_1$ [s]	0,0014	0,015	0,17	1,05	5,1		
$Z_{thJC(A)}$	$R_{th1}$ [°C/W]	0,00106	0,00239	0,004	0,00725	0,0116	0,0087	
	$\tau_1$ [s]	0,0013	0,015	0,16	0,9	5,8	44	
$Z_{thJC(K)}$	$R_{th1}$ [°C/W]	0,00106	0,00245	0,00499	0,0116	0,0127	0,0142	
	$\tau_1$ [s]	0,0013	0,0150	0,19	1,7	10,2	53,5	

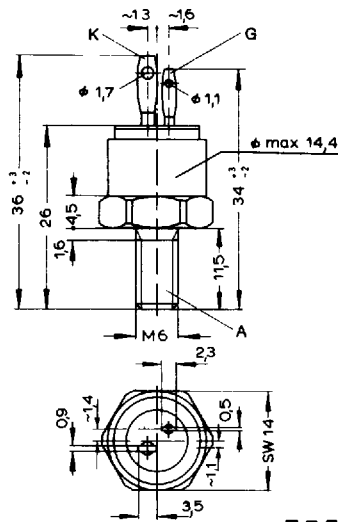
Maßbilder/Outlines  
Thyristoren/Thyristors

T-91-20



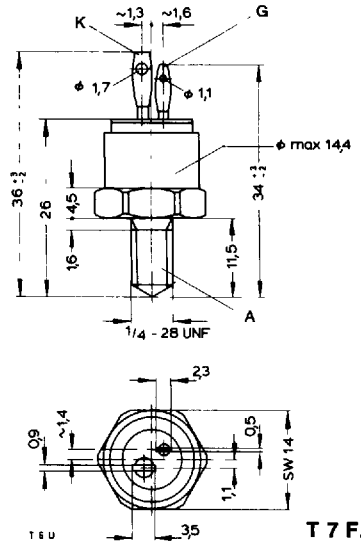
T 3 S...  
T D 3 F...  
R 5 F...

1



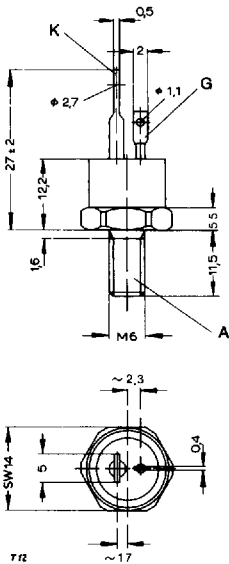
T 7 F...C  
T 10 F...C  
T 13 F...C

2



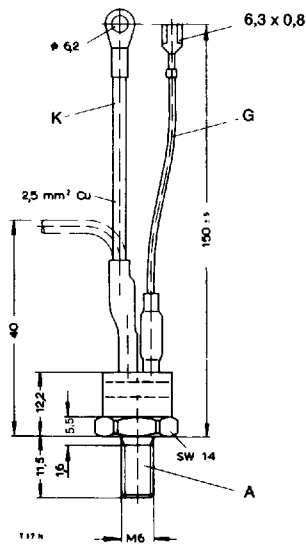
T 7 F...U  
T 10 F...U  
T 13 F...U

3



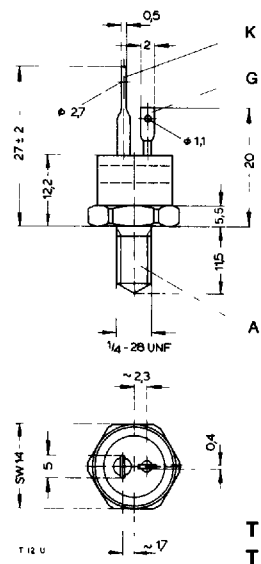
T 12 F...C  
T 17 F...C  
T 24 F...C

4



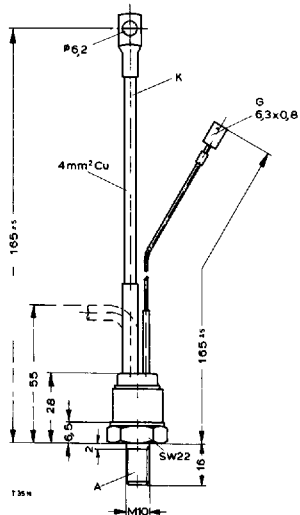
T 17 F...B  
T 24 F...B

5



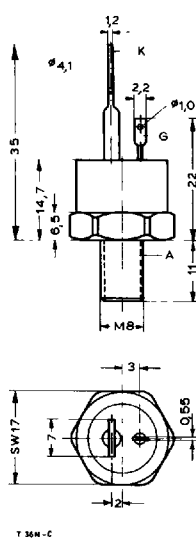
T 12 F...U  
T 17 F...U  
T 24 F...U

6



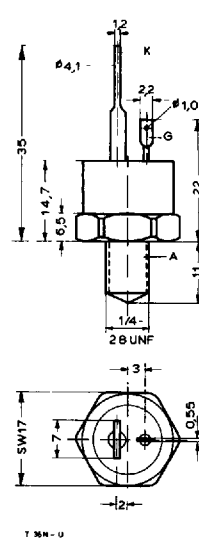
T 35 F...

7



T 36 F...C  
T 46 F...C

8

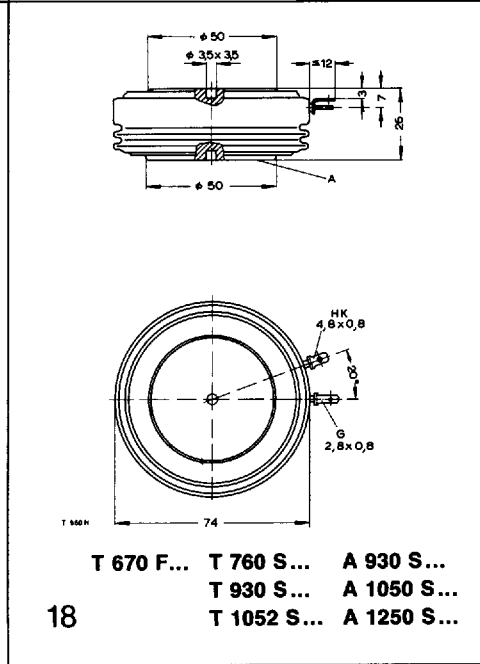
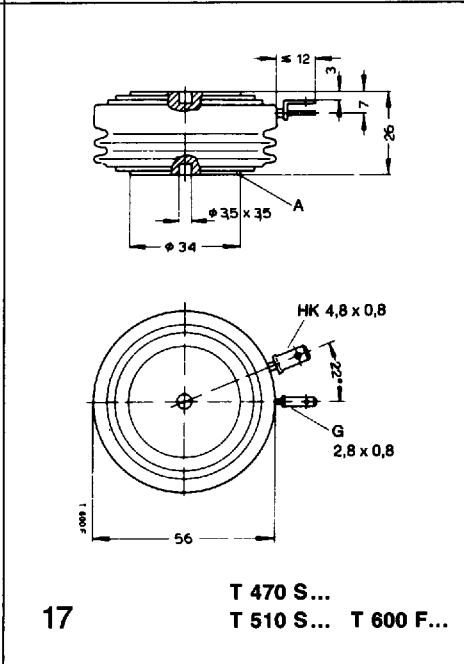
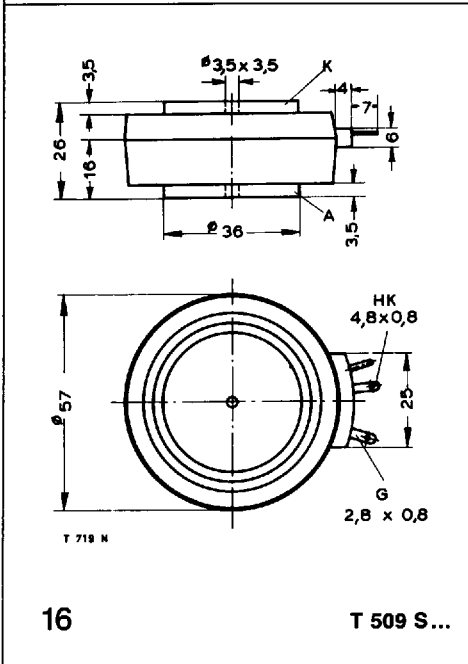
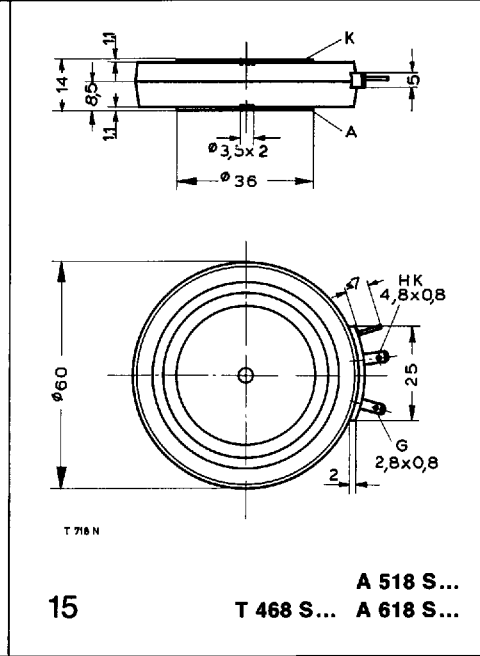
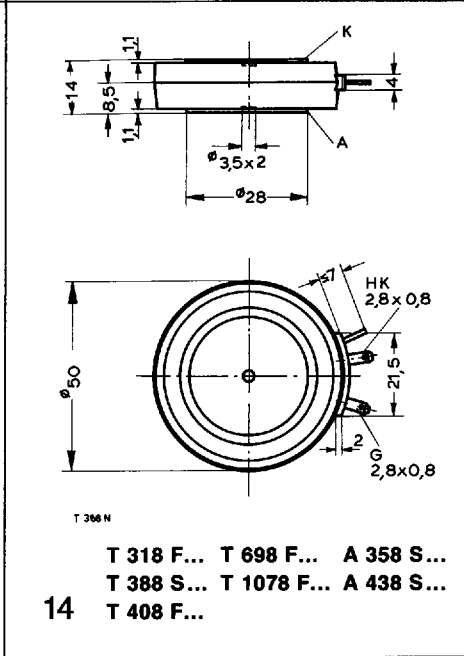
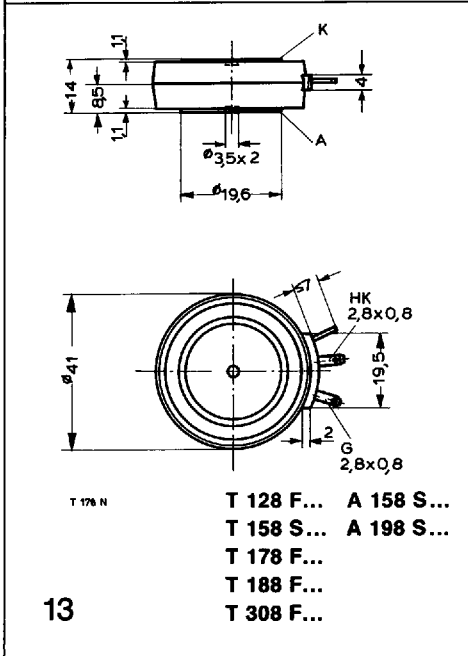
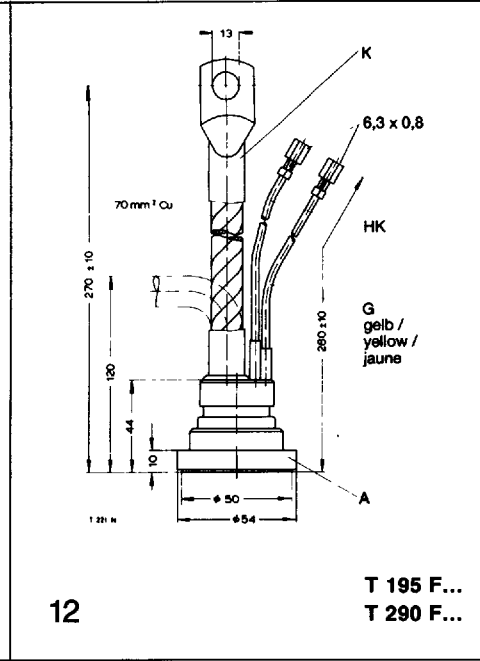
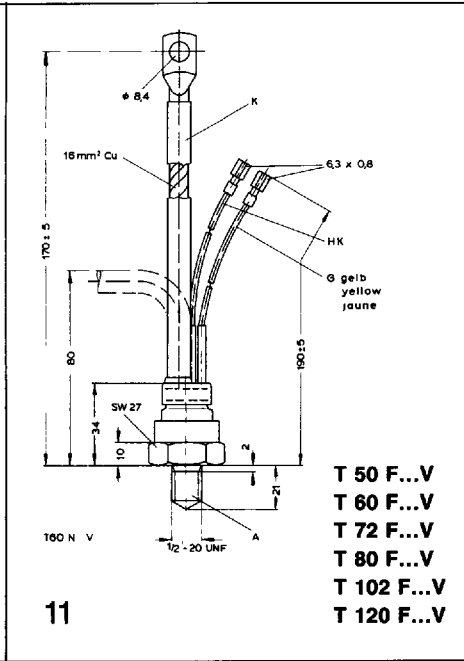
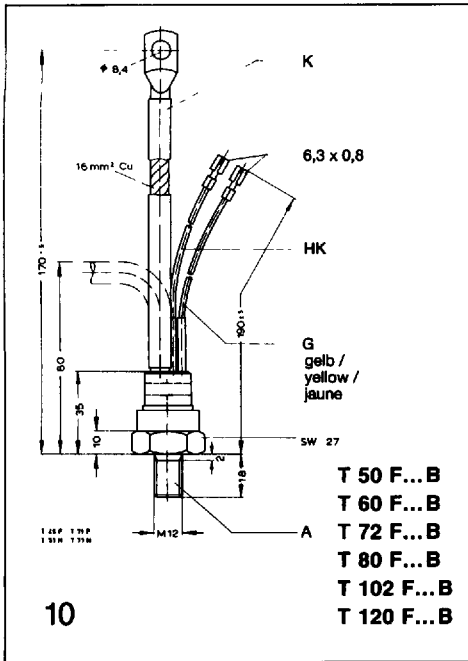


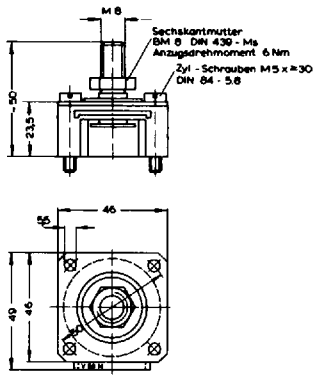
T 36 F...U  
T 46 F...U

9

**Maßbilder/Outlines  
Thyristoren/Thyristors**

T-91-20

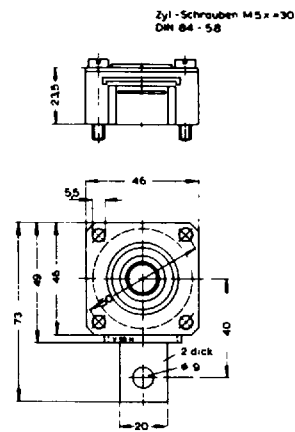




**V 50 M**

Für Bauelemente/For components  
∅ 41 mm, h = 14 mm

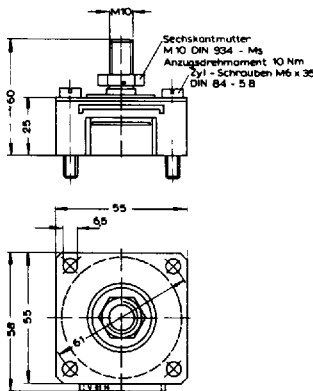
19



**V 50 N**

Für Bauelemente/For components  
∅ 41 mm, h = 14 mm

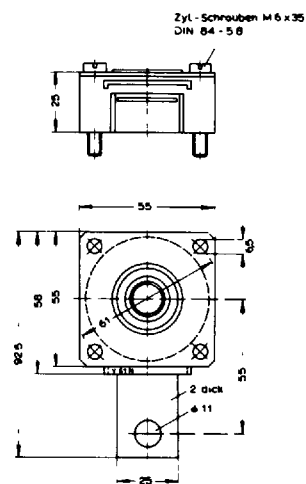
20



**V 61 M**

Für Bauelemente/For components  
∅ 50 mm, h = 14 mm

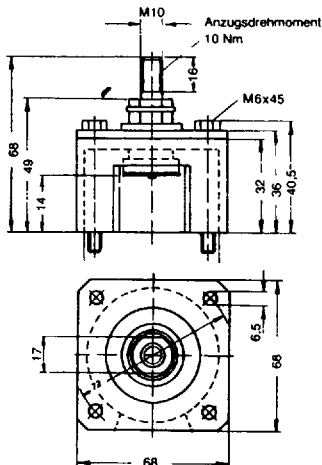
21



**V 61 N**

Für Bauelemente/For components  
∅ 50 mm, h = 14 mm

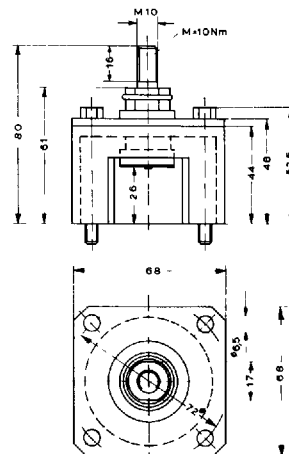
22



**V 72 M 14**

Für Bauelemente/For components  
∅ 60 mm, h = 14 mm

23



**V 72 M 26**

Für Bauelemente/For components  
∅ 60 mm, h = 26 mm

24