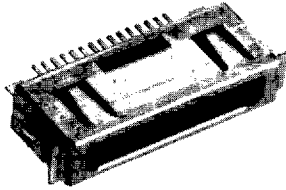


## INFOPORT Series III Dual Port Headers, Shielded, 0 offset

### 15 Positions



Keying Option	Part Numbers <sup>1</sup> Tape and Reel Packaged
1	5-569331-1
2	5-569331-2
3	5-569331-3
4	5-569331-4
5	5-569331-5

<sup>1</sup>Distance from connector centerline to bottom surface of solder tails is 0.

### Material and Finish:

**Housing** — Glass-filled nylon molding compound, black, 94V-0 rated

**Contacts** — Phosphor bronze, duplex plated 0.00025 [0.00010] minimum gold over 0.00102 [0.00040] minimum palladium nickel over 0.00005 [0.00002] minimum gold in contact area, 0.00381 [0.00150] minimum tin-lead on solder tines, with entire contact underplated 0.00127 [0.00050] minimum nickel

**Shield** — Stainless steel, tin-lead plated

**Striker Plate** — Stainless steel

### Related Product Data:

**Frame Kits** — pages 60 & 62

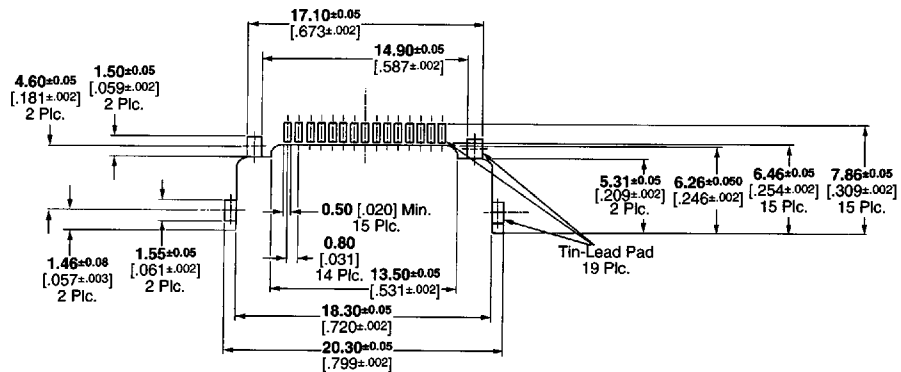
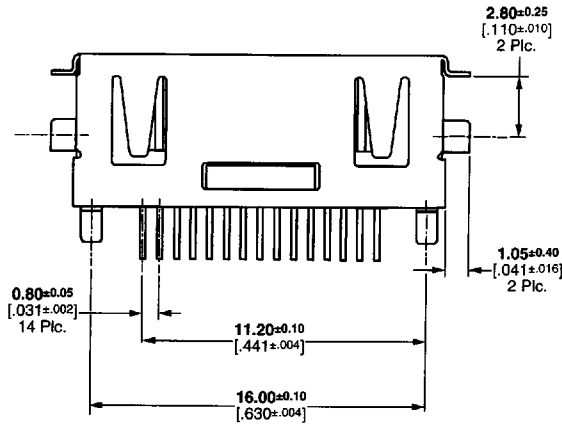
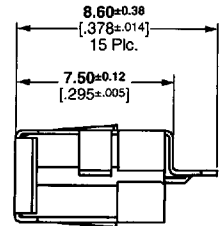
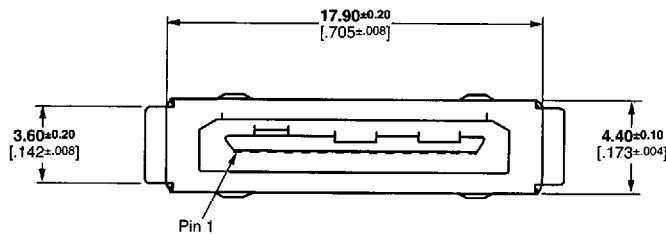
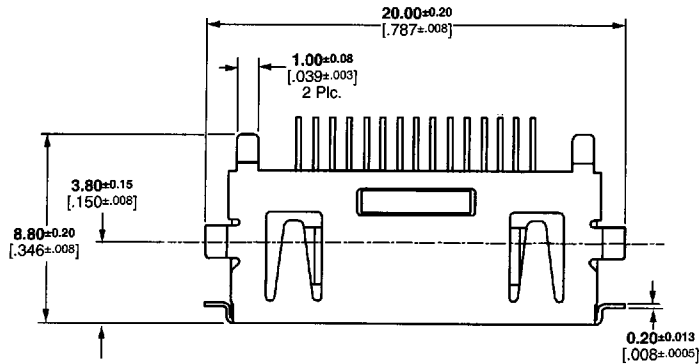
**Mating Cable Connectors** — page 67

### Technical Documents

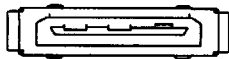
(Page 80):

AMP Application Specification

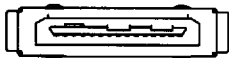
114-6058



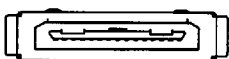
Recommended PC Board Layout



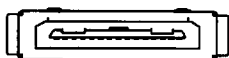
Keying Option 1



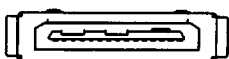
Keying Option 2



Keying Option 3



Keying Option 4



Keying Option 5

Series III I/O Connectors and Frame Kits

---

## Performance Data

---

**Voltage Rating:** 100VAC

**Current Rating (per position):** 0.5A max.

**Low-Level Overall Resistance (per position, max.):** 40m $\Omega$  (initial),  $\Delta R \leq 20m\Omega$  (final)

**Withstanding Voltage:** 500VAC min. (for 1 minute)

**Insulation Resistance (min.):** 1,000M $\Omega$  (initial), 100M $\Omega$  (final)

**Connector Mating/Unmating Force (per 68-position connector):** Mating Force=4.0kg max.,  
Unmating Force=0.68kg min.

**Matings and Unmatings:** Tested to 10,000

**Post Retention Force (min.):** 1.0kg (for 0.44mm [.017 inch] dia. pin)

**Receptacle Retention Force (per position):** 0.5kg min.

**Operating Temperature:** -10°C to +70°C

---

## Technical Documents

---

Various technical documents are available for your use.

**Product Specifications** describe technical performance characteristics and verification tests. They are intended for the Design, Component and Quality Engineer.

- 108-1459 Series II PC Card Connectors, Shielded
- 108-1460 Series I Connector, CHAMP, I/O PC Card, PC Board Header to Cable
- 108-1469 Receptacle Assemblies and PC Card Pin Headers
- 108-1563 Series III Shielded Connectors
- 108-5506 PC CardBus Ejectors
- 108-5507 PC CardBus Pin Headers
- 108-5520 0.6mm FPC Connectors, Part Numbers 316725-1 and 353140-1
- 108-5556 0.6mm FPC Connectors, Part Numbers 316147-1 and 917662-1

**Application Specifications** describe requirements for using the product in its intended application and/or crimping information. They are intended for the Packaging and Design Engineer and the Setup person.



- 114-6055 Series II 0.8mm Cable Connector and PC Board Header
- 114-6056 Series I Cable Connector, CHAMP, I/O PC Card and PC Board Header
- 114-6058 Series III Connectors
- 114-1097 Receptacle Assemblies
- 114-1112 Sonic Welded PC Card Frame Kit Assembly

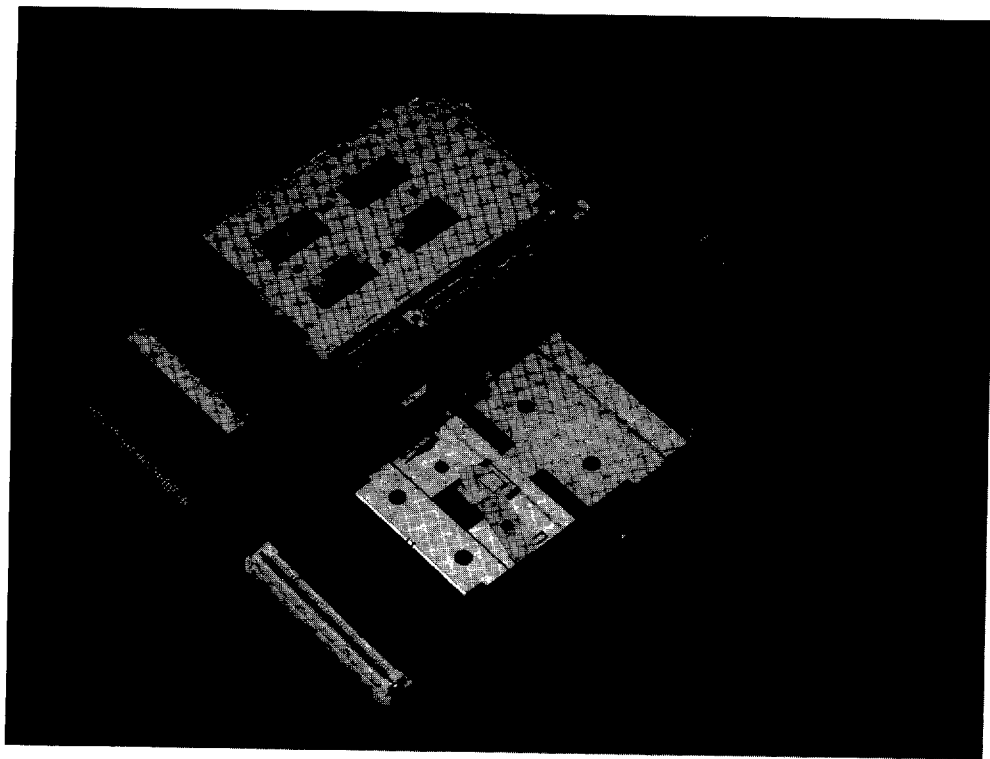
**Instruction Sheets** provide instructions for assembling or applying the product. They are intended for the Manufacturing Assembler or Operator.

- 408-3362 Series III Pull-to-Release Connectors

## Introduction

## Product Facts

- Compatible with PC Card standards issued by PCMCIA and JEIDA
- Enhanced (shielded) pin headers and receptacle assemblies meet PC Card standard (CardBus)
- Pin headers and ejectors accept Types I, II and III PC cards
- 68-position pin headers available in standard and raised heights, with thru-hole and surface-mount leads for top or bottom attachment to host PC board
- Double slot 136-position standard and raised height pin headers available with thru-hole leads. Currently, double slot assemblies can accommodate Type I and Type II PC Cards in the top and bottom slots. Type III PC Cards can be used in the bottom slot only
- Guide rails available for standard and raised height pin headers
- 68-position receptacle assemblies with surface-mount or straddle-mount lead configurations
- Standard PC Card polarized keying (5 volt and low volt)
- Recognized under the Component Program of Underwriters Laboratories Inc., File No. 28476 
- Certified by Canadian Standards Association, File No. LR7189 



AMP offers a versatile family of connectors that accept Type I, II and III PC Cards. These connectors are compatible with PCMCIA (Personal Computer Memory Card International Association), PC Card and JEIDA (Japan Electronics Industry Development Association), PC Card standards.

**Receptacle Assemblies**

68-position receptacle assemblies attach to a PC Card and feature high-temperature, reflow process compatibility for surface or straddle mounting. The receptacle contacts are designed with dual contact beams for reliable electrical performance. These receptacles find wide application in memory cards (SRAM, DRAM, Flash), PC Cards, Modem and Lan I/O kits and Imaging Systems.

**Pin Headers**

68-position right-angle pin headers, available in standard and raised heights, provide attachment to the host equipment and offer

three levels of sequencing. The pin headers feature high temperature, reflow process compatibility. Both standard and raised height pin headers offer through-hole and surface-mount lead configurations for top or bottom mounting. Double slot standard and raised height pin headers permit 136 circuit connections with through-hole lead configurations for top mounting. An organizer on the 68- and 136-position headers and 4-sided post lead-in aid in the placement of the headers on the PC board. The true position of the leads is held to 0.30 [.012]. This allows a small hole size, 0.84 [.033], to be used in the PC pattern, which gives the designer flexibility in routing signal paths. This pin header is also available in a vertical, top-board surface mount configuration, as well as bottom board surface-mount. Guide rails and card guides facilitate the insertion and removal of

the PC Cards. Pin headers find wide use in such equipment as: computer, office, photographic, communications, industrial, test and medical, and pay TV/satellite.

**Ejectors**

Ejectors facilitate the insertion and extraction of PC Cards. They provide ESD/EMI protection and are available with eject buttons on either side. Ejectors are furnished to accommodate standard and raised height and double slot pin headers and may be purchased separately, or assembled to the pin headers. They are designed to be easily added to the pin headers after PC board processing.

**CardBus**

Enhanced (shielded) pin headers and receptacle assemblies are available for 32-bit PC Card applications.