

SPST Absorptive Switch Modules

2952-Series

Features

- Broadband Frequency Ranges
- Hermetic Package
- Stripline Compatible
- Compact Size

Description

M/A-COM's switch modules cover multi-octave bandwidths from UHF to Ku-band. M/A-COM's expertise in semiconductor technology and design techniques results in devices having unique advantages that allow them to satisfy a variety of microwave system requirements.

Screening

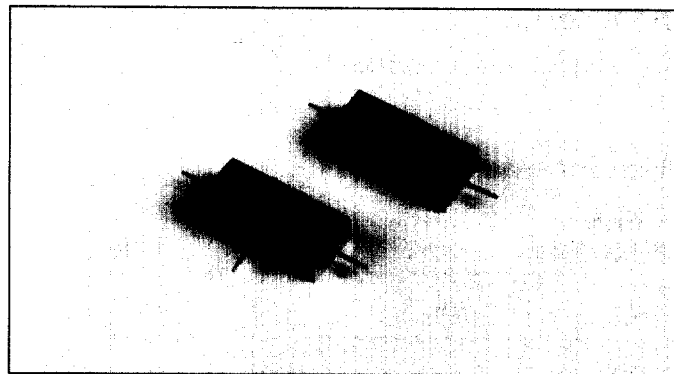
All devices are fully screened in accordance with the following sequence:

Test	MIL-STD	Method	Cond
Non-Destructive Bond Pull	883	2023	
Internal Visual	M/A-COM	QCP	H076
Stabilization Bake	883	1008	B
Thermal Cycle	883	1010	B
Constant Acceleration	883	2001	A (YI Axis)
Burn-in	883	1015	125°C
Seal			
Fine	883	1014	AI
Gross	883	1014	CI
External Visual	883	2009	

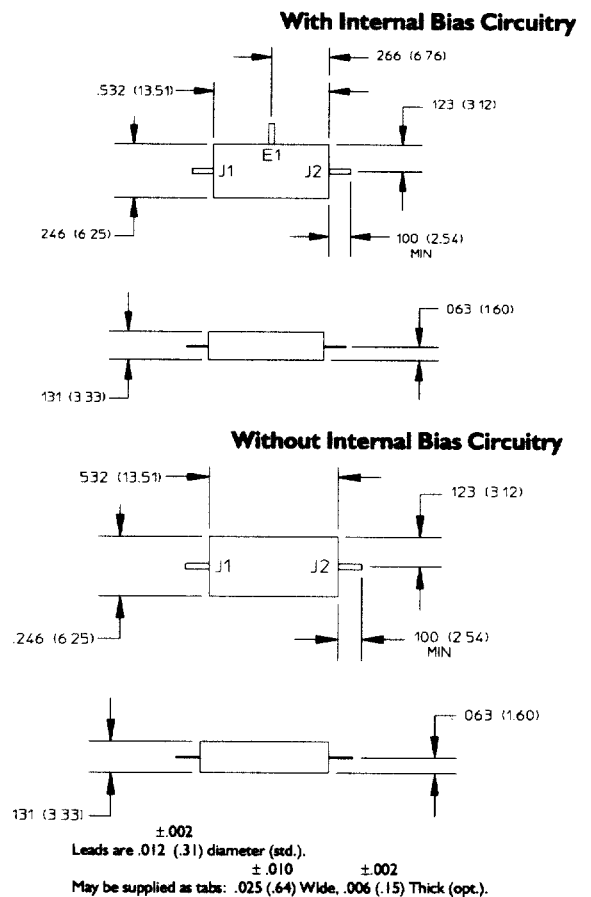
Maximum Ratings

Storage Temp. -65°C to +125°C

Operating Temp. -55°C to +95°C

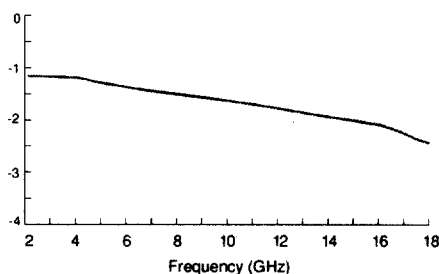


Mechanical Outline

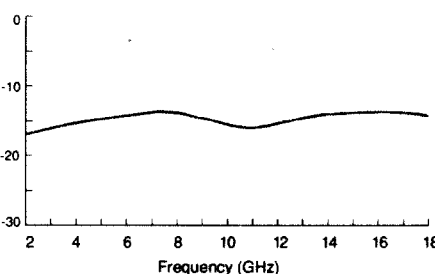


Typical Performance Data 2952-1004

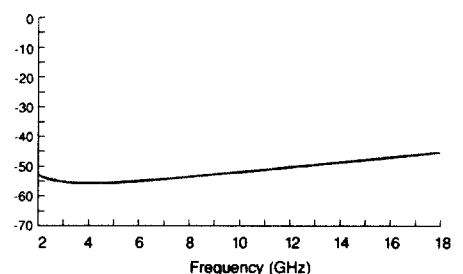
Insertion Loss (dB)



Return Loss (dB)



Isolation (dB)



2952-Series

Typical Specifications 25°C

With Internal Bias Circuitry

Frequency Range (GHz)	Insertion Loss (dB)	VSWR	Isolation (dB)	Switching Speed (nS)	Power Handling (W)	Part Number
0.5-2.0	1.5	1.7:1	50	1000	0.5	2952-1001
2.0-8.0	1.9	1.7:1	50	1000	0.5	2952-1002
6.0-18.0	2.6	1.9:1	45	1000	0.5	2952-1003
2.0-18.0	2.8	2.0:1	45	1000	0.5	2952-1004

Without Internal Bias Circuitry

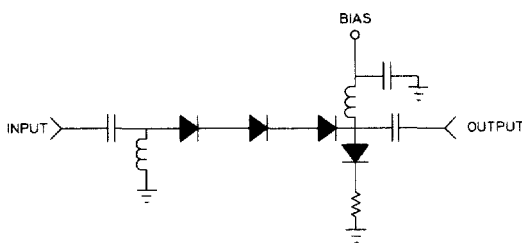
Frequency Range (GHz)	Insertion Loss (dB)	VSWR	Isolation (dB)	Switching Speed (nS)	Power Handling (W)	Part Number
0.5-2.0	1.5	1.7:1	50	1000	0.5	2952-2001
2.0-8.0	1.8	1.7:1	50	1000	0.5	2952-2002
6.0-18.0	2.3	1.9:1	45	1000	0.5	2952-2003
2.0-18.0	2.5	2.0:1	45	1000	0.5	2952-2004

Notes:

1. Bias: -20mA for specified loss
+20mA for specified isolation
2. Switching speed is measured from 10%-90% and 90%-10% of the detected RF with a 2 MHz maximum switching rate.
3. Switching speed is measured with a standard M/A-COM driver.
4. Operating power is 100mW maximum.

Typical Schematic

With Internal Bias Circuitry
Part Number 2952-1004



Without Internal Bias Circuitry
Part Number 2952-2004

