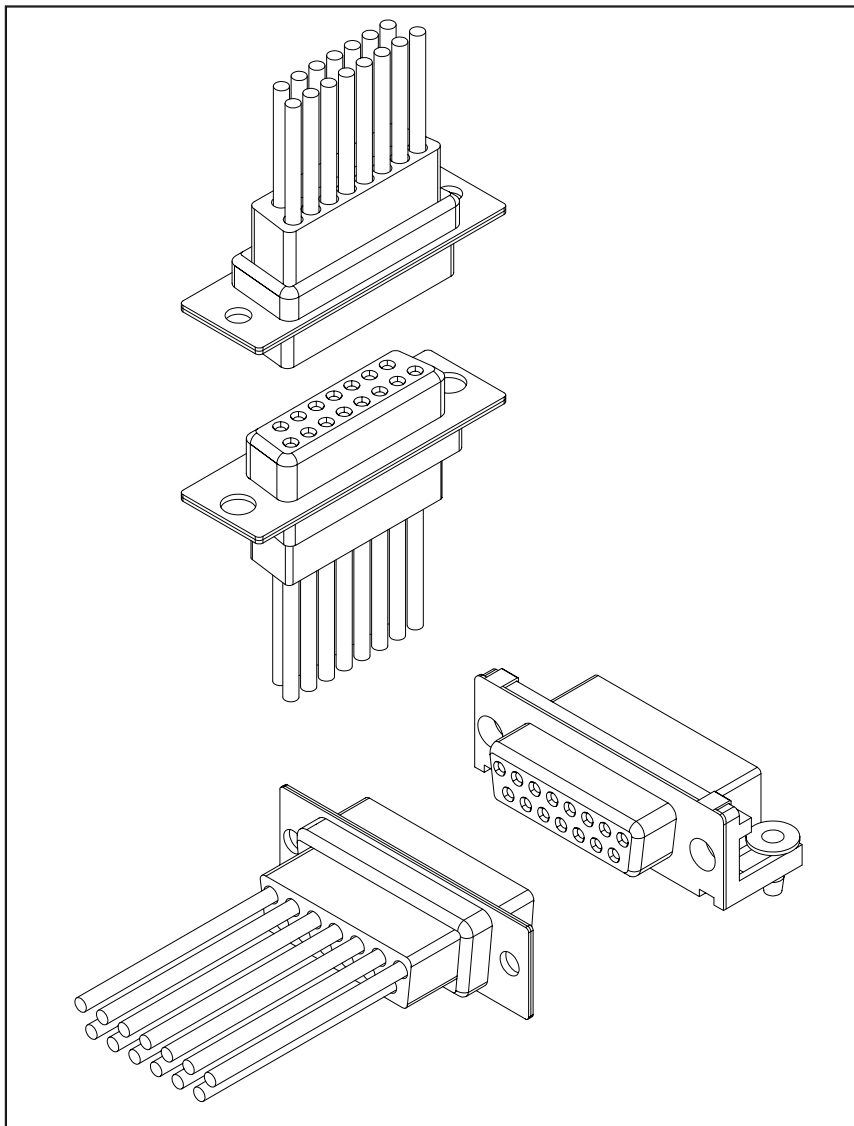
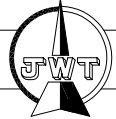
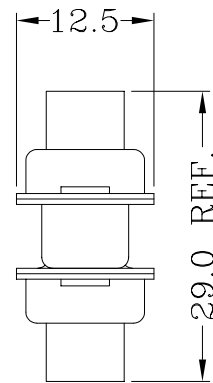


D1021/D1022 Series

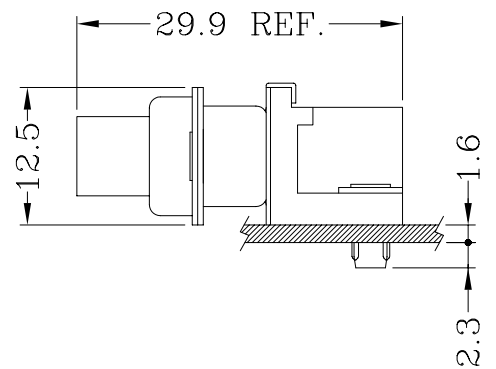
2.77mm pitch D-subminiature wire to wire
plug and receptacle connector series



Assembly Layout
Straight Angle (V-Type)



Right Angle (R-Type)



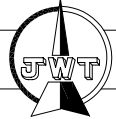
Specifications:

Poles	9,15,25,37 Poles
Pitch between poles	1.00mm
Rated Voltage	250V AC,DC
Rated Current	1A
Withstand Voltage	800V AC/minute
Contact Resistance	20mΩ (MAX.)
Insulation Resistance	1,000MΩ (MIN.)
Temperature Range	-25~+85°C
Applicable Wire Range	AWG #24~#28

UL:Recognized No. E144544

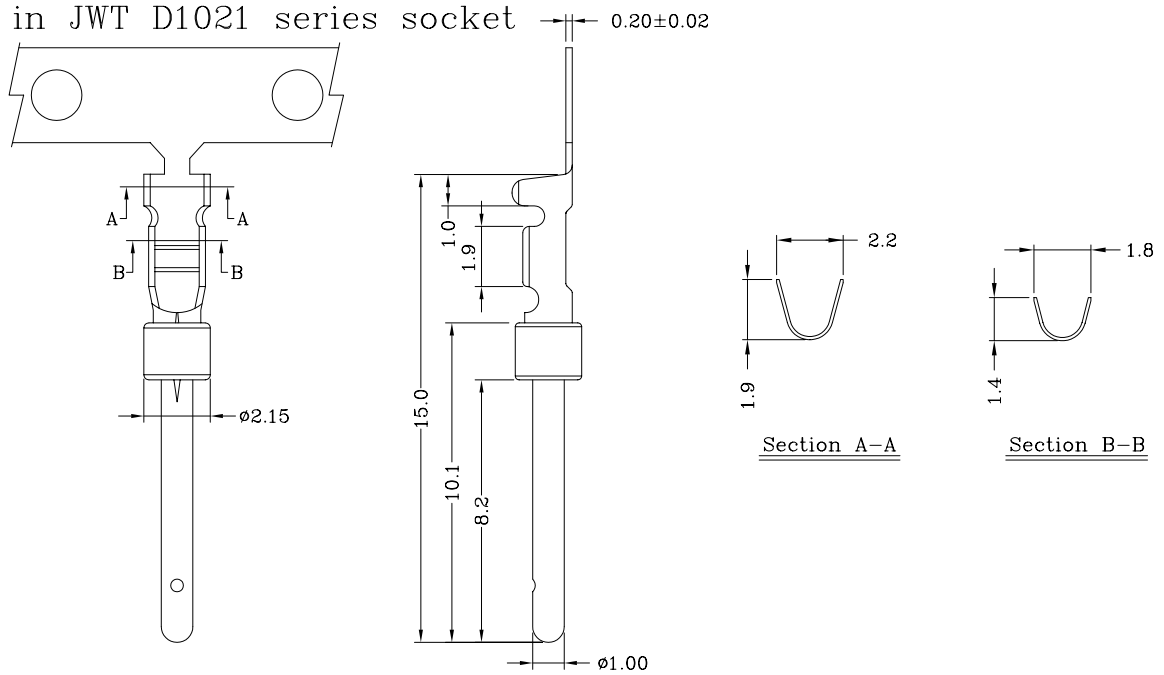
D1021 Series

2.77mm pitch D-subminiature crimp terminal



Features:

* Used in JWT D1021 series socket



Specifications & Ordering Information :

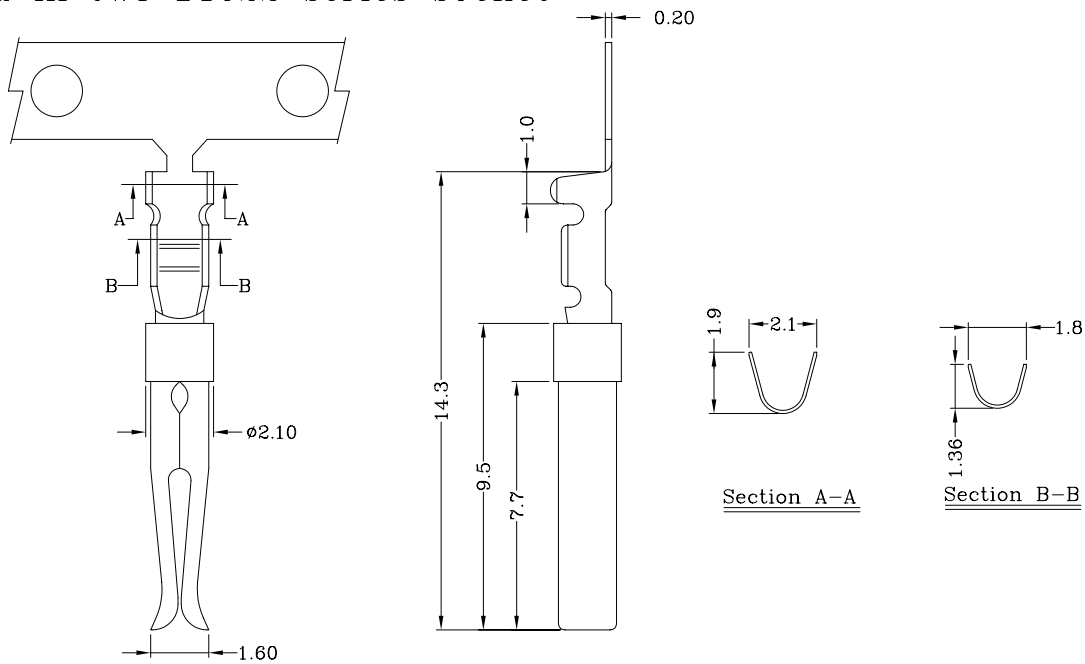
Part No	Wire Range	Insulation O.D.	Material	Qty/reel
D1021TOB-0*	AWG #24~#28	1.45mm (max)	Brass	10,000 PCS

D1022 Series

2.77mm pitch D-subminiature crimp terminal

Features:

* Used in JWT D1022 series socket



Specifications & Ordering Information :

Part No	Wire Range	Insulation O.D.	Material	Qty/reel
D1022TOP-0*	AWG #24~#28	1.45mm (max)	Phosphor Bronze	10,000 PCS

Note: Tin plating on crimp portion, Au over nickel on contact portion

0*--Gold Plated with 50 " Nickel

00--1μ"Au, 0A--3μ"Au, 0B--4μ"Au, 0C--5μ"Au, 0D--15μ"Au, 0E--30μ"Au

0F--50μ"Au, 0G--10μ"Au, 0H--2μ"Au, 0I--20μ"Au, 0J--25μ"Au