

PRODUCT DATA DRAWING

CAD
GENERATED
DRAWING

DCN
CONTROLLED
DOCUMENT

DWG. NO.

SF1633-6001

MATERIAL :

BODY &
SLEEVE: STAINLESS STEEL PER AMS 5640
UNS S30300

FERRULE: BRASS PER ASTM B 16 ALLOY
UNS 36000, H02

CONTACTS: BERYLLIUM COPPER PER ASTM B 196
ALLOY C17300

INSULATORS: KEL-F PER ASTM D 1430

FINISH :

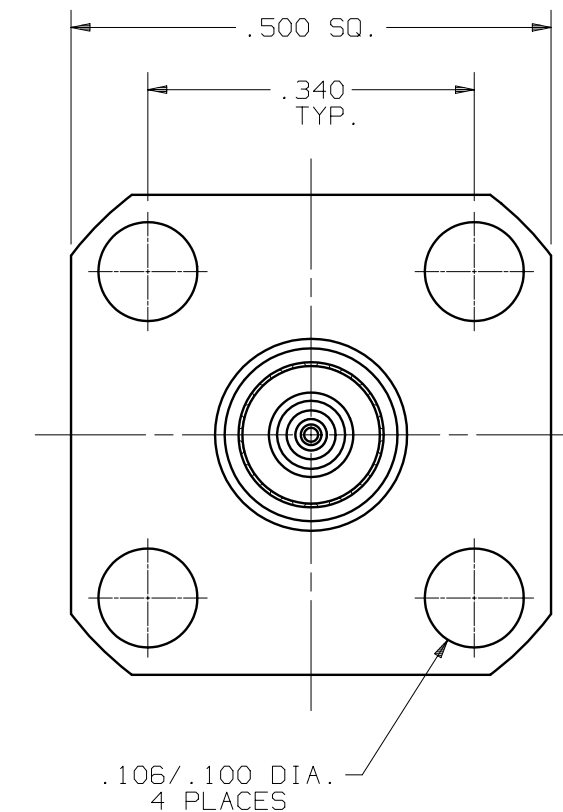
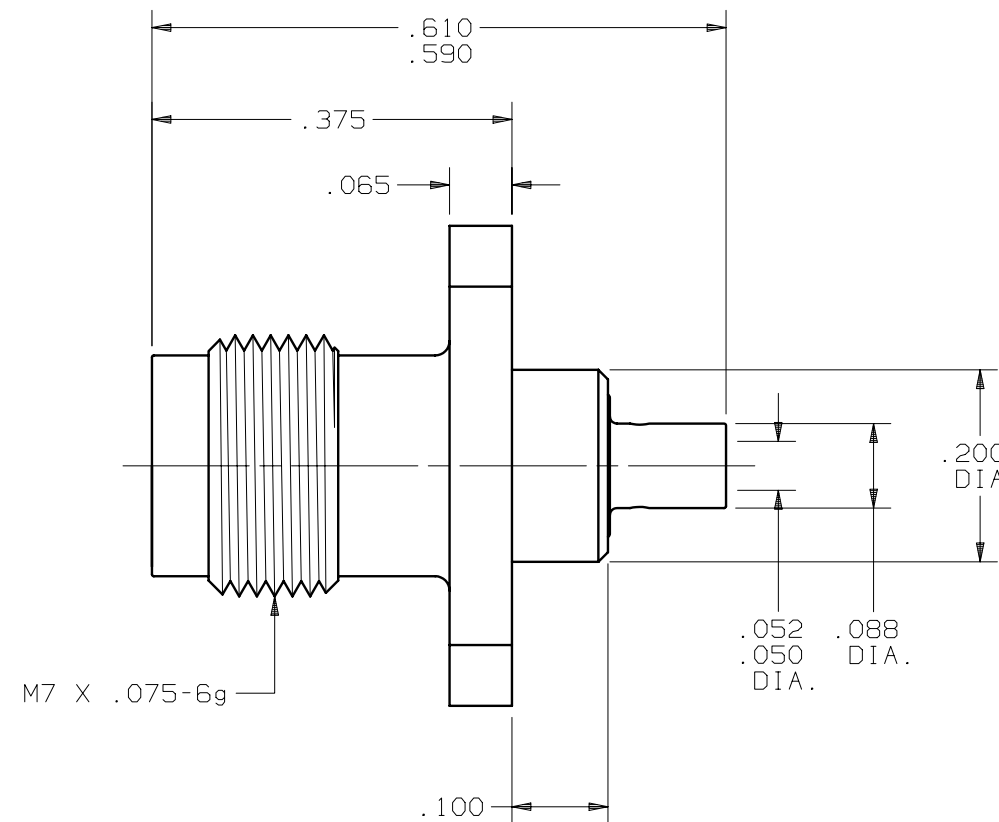
BODY &
SLEEVE: PASSIVATED PER QQ-P-35, TYPE II

CONTACTS: GOLD PER ASTM B 488, TYPE I,
GRADE C, CLASS .51 OVER NICKEL
PER QQ-N-290, CLASS 1

FERRULE: GOLD PER ASTM B 488, TYPE II,
GRADE C, CLASS .76 OVER NICKEL
PER QQ-N-290, CLASS 1

PERFORMANCE :

IMPEDANCE: 50 OHMS
DWV: 500 VRMS
FREQ. RANGE: DC-50.0 GHz
INSUL. RES.: 5000 MEGOHMS, MIN.



SYM.	DESCRIPTION	DATE	APPR.	UNLESS OTHERWISE SPECIFIED: 1) ALL DIMENSIONS ARE AFTER PLATING. 2) BREAK CORNERS & EDGES .005 R. MAX. 3) CHAM. 1s1 & LAST THDS. 4) SURFACE ROUGHNESS 63 / MIL-STD-10. 5) DIAS. ON COMMON CENTERS TO BE CONCENTRIC WITHIN .005 T.I.R. 6) REMOVE ALL BURRS.	DIMENSIONS ARE IN INCHES TOLERANCES:			TITLE: 2.4mm JACK 4 HOLE FLANGE MOUNT FOR .047 S.R. CABLE
				DECIMALS .X ±.030 .XX ±.015 .XXX ±.005	FRACTIONAL ±1/64	ANGULAR X° ±1°0' X°X' ±15'	DWG. NO. SF1633-6001	
-	REL.DCN 30422	09/03	CCC		MATERIAL: SEE ABOVE			AREA: N/A
A	REV.DCN 31247	03/04	CCC		FINISH: SEE ABOVE			
					SIZE B	CAGE NO. 95077	SCALE 5X	
					DRAWN: BRT 09/24/03			
					CHECKED: CCC 09/24/03			
					APPROVED: CCC 09/24/03			