

SPDT Reflective Switch Modules

2954 Series

V2.00

Features

- Broadband Frequency Ranges
- Hermetic Package
- Stripline Compatible
- Compact Size

Description

M/A-COM's switch modules cover multi-octave bandwidths from UHF to Ku-band. M/A-COM's expertise in semiconductor technology and design techniques results in devices having unique advantages that allow them to satisfy a variety of microwave system requirements.

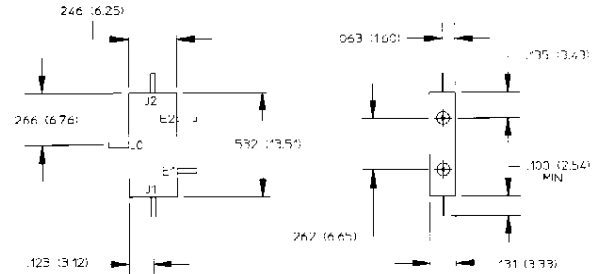
Screening

Optional screening can be performed in accordance with the following sequence:

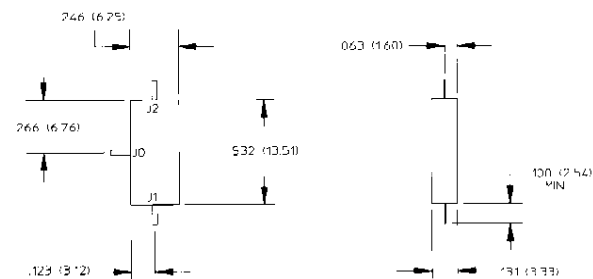
Test	MIL-STD	Method	Cond
Non-Destructive Bond Pull	883	2023	
Internal Visual	M/A-COM	QCP	QAP 409
Stabilization Bake	883	1008	B
Thermal Cycle	883	1010	B
Constant Acceleration	883	2001	A (Y1 Axis)
Burn-In	883	1015	125 °C
Seal Fine	883	1014	A1
Gross	883	1014	C1
External Visual	883	2009	

Mechanical Outline (Top View)

With Internal Bias Circuitry



Without Internal Bias Circuitry



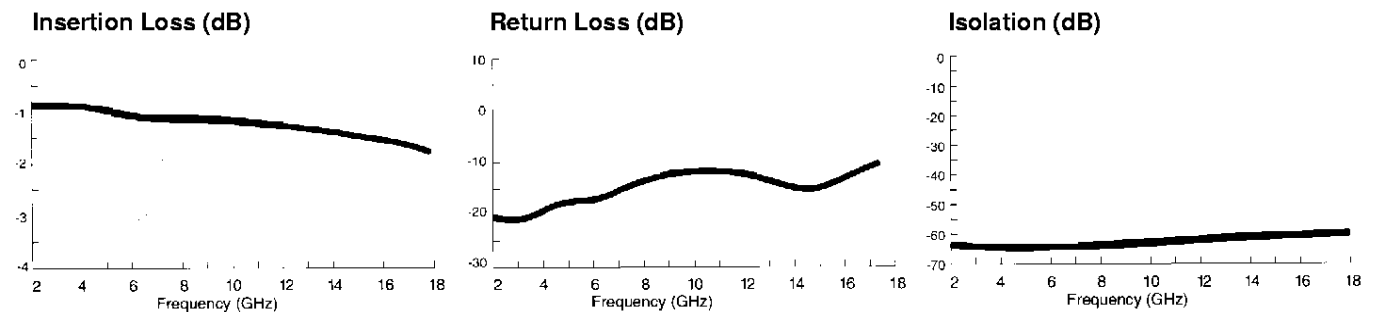
±.002
Leads are .012 (.31) diameter (std.).
±.010 ±.002

May be supplied as tabs: .025 (.64) Wide, .006 (.15) Thick (opt.).
Contact factory.

Maximum Ratings

Storage Temp.	-65 °C to +125 °C
Operating Temp.	-55 °C to +95 °C

Typical Performance Data 2954-1004



Manufactured in USA. European manufactured version also available. Contact your local M/A-COM Sales Representative.

Specifications Subject to Change Without Notice.

M/A-COM, Inc.

North America: Tel. (800) 366-2266 ■ Asia/Pacific: Tel. +81 (03) 3226-1671 ■ Europe: Tel. +44 (1344) 869 595
Fax (800) 618-8883 Fax +81 (03) 3226-1451 Fax +44 (1344) 300 020

**Typical Specifications 25 ° C
With Internal Bias Circuitry**

Frequency Range (GHz)	Insertion Loss (dB)	VSWR	Isolation (dB)	Switching Speed (nS)	Power Handling (W)	Part Number
0.5-2.0	0.8	1.5:1	40	20	0.5	2954-1001
2.0-18.0	2.6	2.0:1	35	20	0.5	2954-1004

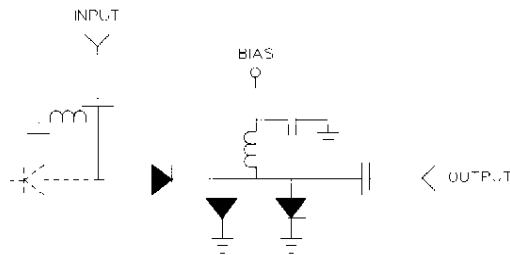
Without Internal Bias Circuitry

Frequency Range (GHz)	Insertion Loss (dB)	VSWR	Isolation (dB)	Switching Speed (nS)	Power Handling (W)	Part Number
0.5-2.0	0.8	1.5:1	40	20	0.5	2954-2001
2.0-18.0	1.8	2.0:1	50	20	0.5	2954-2004

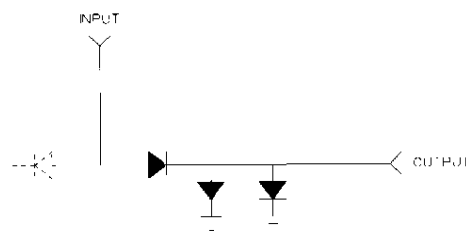
1. Bias: -30V for specified loss
+30mA for specified location
2. Switching speed is measured from 10%-90% and 90%-10% of the detected RF with a 2 MHz maximum switching rate.
3. Switching speed is measured with a standard M/A-COM driver.
4. Operating power is 100 mW maximum.

Typical Schematic

**With Internal Bias Circuitry
Part Number 2954-1004**



**Without Internal Bias Circuitry
Part Number 2954-2003**



Specifications Subject to Change Without Notice.