

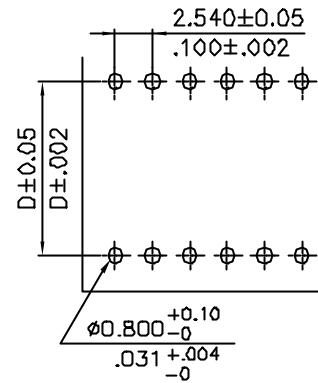
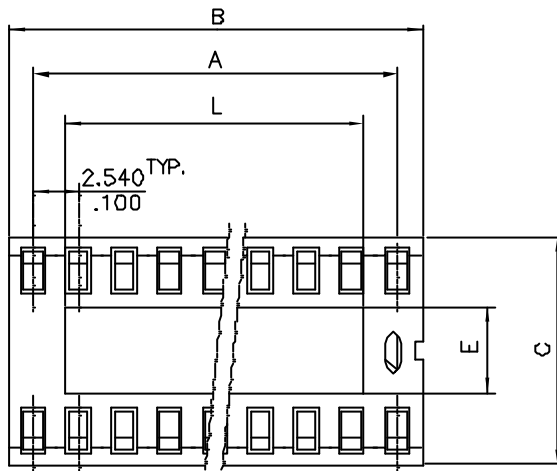
\*\*\* 8300 Series \*\*\*

Material :

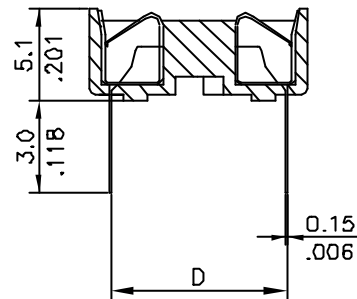
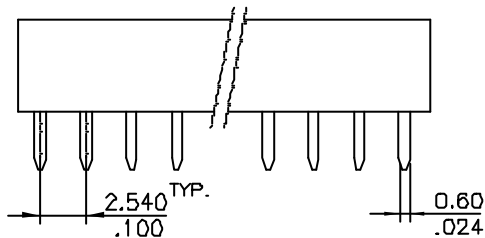
\* Insulator: PBT UL94V-0

\* Contact: Phosphor Bronze

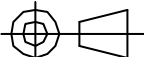
\* Plating: Tin Plated 120 ?" min. over 30~50 ?" nickel overall



Recommended Hole Pattern



Part No.	Dim.A	Dim.B	Dim.C	Dim.D	Dim.E	Dim.L
8300-24ATOA	27.940(1.100)	30.3(1.193)	17.6(.693)	15.240(.600)	9.4(.370)	24.8(.976)
8300-28ATOA	33.020(1.300)	35.4(1.394)	17.6(.693)	15.240(.600)	9.4(.370)	29.9(1.177)
8300-32ATOA	38.100(1.500)	40.5(1.594)	17.6(.693)	15.240(.600)	9.4(.370)	35.0(1.378)
8300-40ATOA	48.260(1.900)	50.7(1.996)	17.6(.693)	15.240(.600)	9.4(.370)	45.2(1.780)

				<b>LECO</b> LECO CORPORATION		APPROVED BY:		PART NO.: 8300-**ATOA				
E	E980058			GENERAL TOLERANCE		CHECKED BY:		TITLE: 2.54mm(.100") Dual In Line Ic Socket				
D	E960684			X. ±	X' ± 2'	DRAW BY:		DRAWING NO.: 830003S				
C	E960682			.X ± $\frac{0.30}{.012}$	.X' ±			UNITS	SCALE	SIZE	SHEET	REV.
B	E960410			.XX ± $\frac{0.20}{.008}$	.XX' ±			MM	~	A4	1/1	E
REV.	ECO. NO.	CHG	APPD.	.XXX ± $\frac{0.10}{.004}$	.XXX' ±			inch				