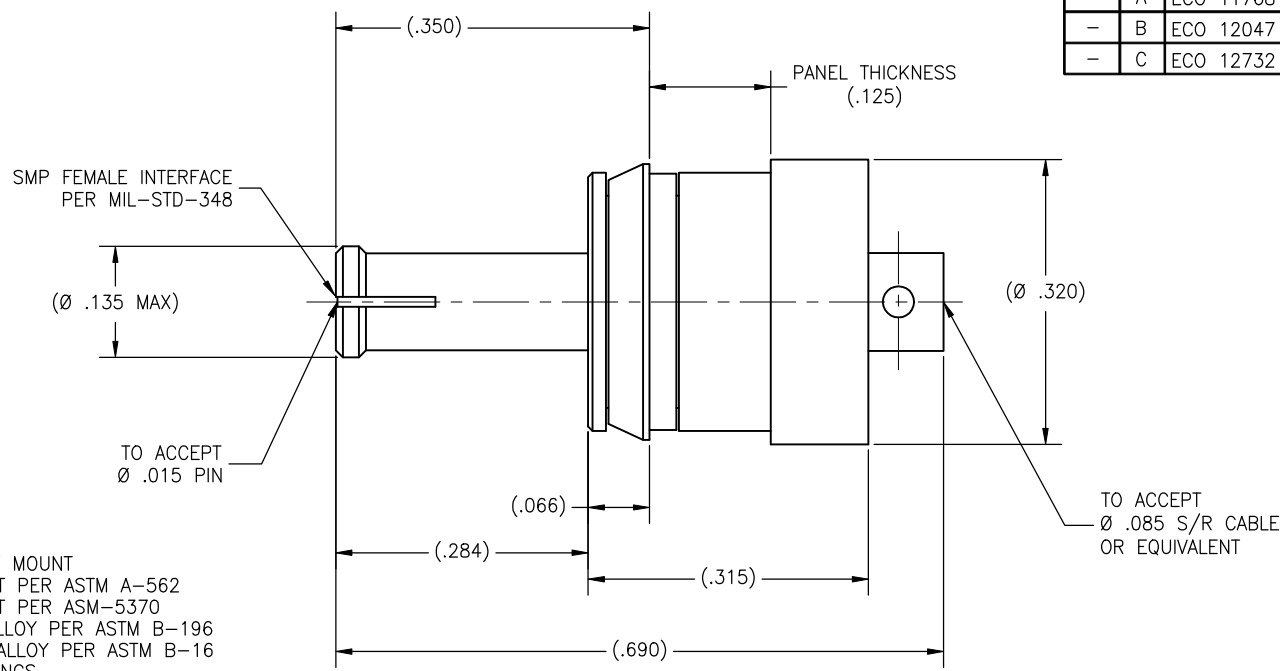


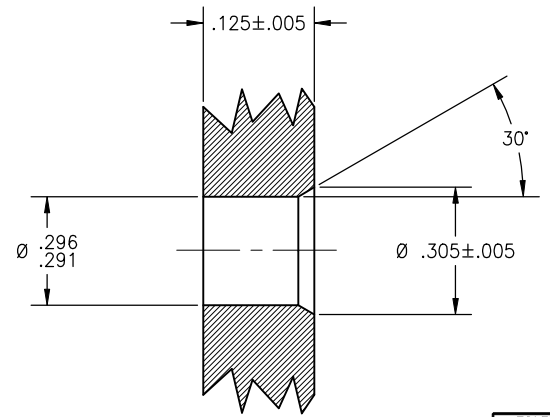
P/N	APPLICABLE NOTES
-1	1,2,3,4,5,6

REVISIONS				
ZONE	REV	DESCRIPTION	DATE	BY
-	A	ECO 11768	05/31/00	IMG
-	B	ECO 12047	08.01.00	DKN
-	C	ECO 12732	03/02/01	HDB



NOTE(S):

1. MATERIALS
  - 1.1 BODY, FLOAT MOUNT
    - 1.1.1 303 SST PER ASTM A-562
    - 1.1.2 304 SST PER ASM-5370
    - 1.1.3 BeCu ALLOY PER ASTM B-196
    - 1.1.4 BRASS ALLOY PER ASTM B-16
  - 1.2 WASHERS, RINGS
    - 1.2.1 303 SST PER ASTM A-562
    - 1.2.2 304 SST PER ASM-5370
    - 1.2.3 BeCu ALLOY PER ASTM B-196
  - 1.3 SPRING
    - 1.3.1 MUSIC WIRE
  - 1.4 CENTER CONDUCTOR
    - 1.4.1 BeCu ALLOY PER ASTM B-196
  - 1.5 INSULATOR
    - 1.5.1 PTFE TEFLON PER ASTM D-1710
2. FINISH(ES)
  - 2.1 BODY, CENTER CONDUCTOR:
    - 2.1.1 GOLD PLATED PER ASTM B-488
  - 2.2 WASHERS, RINGS
    - 2.2.1 GOLD PLATED PER ASTM B-488
    - 2.2.2 PASSIVATED PER ASTM A-967
  - 2.3 SPRING
    - 2.3.1 NICKEL PLATED PER AMS-QQ-N-290
3. MAX FLOAT
  - \*AXIAL: .125 INCH
  - \*RADIAL: ±.030 INCH
4. SPRING RATE
  - 38.5 LBS/INCH
5. SPRING FORCE
  - \*PRE LOAD: 0.81 LBS
  - \*.035 COMPRESSION: 2.15 LBS
  - \*.125 COMPRESSION: 5.6 LBS
6. ELECTRICAL PERFORMANCE:
  - 6.1 FREQUENCY RANGE: dc-18GHz
  - 6.2 R.F. INSERTION LOSS: 0.25dB Max to 18GHz
  - 6.3 VSWR: 1.20:1 Max. to 18GHz



**NOTICE**  
 THIS DRAWING EMBODIES A CONFIDENTIAL PROPRIETARY DESIGN ORIGINATED BY TENSOLITE COMPANY AND ALL DESIGN, MANUFACTURING REPRODUCTION, USE AND SALE RIGHTS REGARDING THE SAME ARE EXPRESSLY RESERVED. IT IS SUBMITTED UNDER A CONFIDENTIAL RELATIONSHIP FOR A SPECIFIED PURPOSE AND THE RECIPIENT AGREES BY ACCEPTING THIS DRAWING NOT TO SUPPLY OR DISCLOSE ANY INFORMATION REGARDING IT TO ANY UNAUTHORIZED PERSON OR TO INCORPORATE IN OTHER PROJECTS ANY SPECIAL FEATURES PECULIAR TO THIS DESIGN. ALL PATENT RIGHTS HERETO ARE EXPRESSLY RESERVED BY TENSOLITE COMPANY, LONG BEACH, CALIFORNIA 90815.

- TOLERANCES AND NOTES EXCEPT AS NOTED**  
 DIMENSIONS ARE IN INCHES.  
 LINEAR .XX ±.015  
 .XXX ±.005 ANGLUAR ± 1/2°  
 FRACTION ± 1/32
1. MACHINE FINISH:  $\sqrt{32}$  RMS
  2. BREAK ALL SHARP EDGES .003 MAX.
  3. MACHINED FILLETS .005 MAX.
  4. MACHINED SURFACES SQUARE TO RESPECTIVE AXIS WITHIN .005 INCHES PER INCH.
  5. MACHINED DIAMETERS CONCENTRIC WITHIN .002 T.I.R.
  6. DIMENSIONS TO BE MET BEFORE PLATING.
  7. CHAMFER ALL THREADS 45°.
  8. THREADS PER N-28
  9. REMOVE FRAMED EDGES ON TEFLON.
  10. REMOVE ALL BURRS.

DRAWING NO.	P634	REV.	C
-------------	------	------	---

MATERIAL	SIZE	SPECIFICATION	PROCUREMENT
-	-	-	-
NEXT ASSY			
APPROVAL INITIALS		DATE	
DRAWN BY: ATV		08.04.99	
CHECKED		TITLE: SMP FEMALE FLOAT MOUNT STRAIGHT TO Ø.085 S/R CABLE EXTENDED INTERFACE	
QUALITY		SCALE: NONE	SUB-DIRECTORY\FILENAME: OLPXXX\OLP634
ENGINEERING	ATV	12.14.01	SHEET 1 OF 1
	C	30990	DRAWING NO. P634
			REV. C