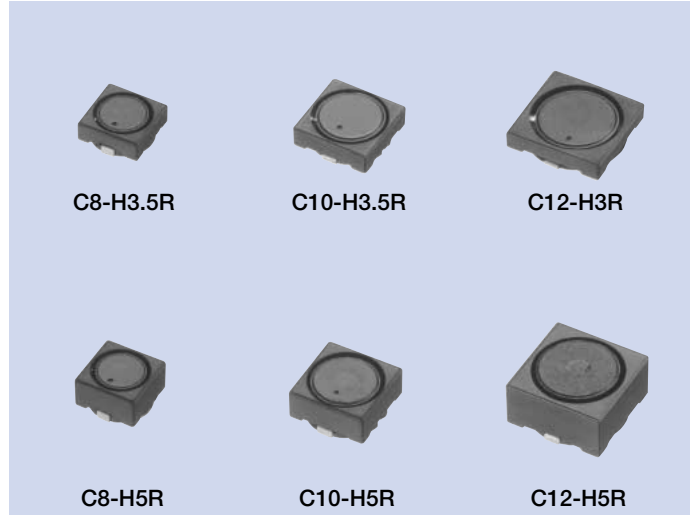


Power Inductors

# C8-H, C10-H, C12-H Series

## OUTLINE

High current and low resistance of choke coil have been lined up for note PC and amusement equipment. This series is two ranks size down from Cxx-K series.



## FEATURES

1. Ribbon wire for low DC resistance.
2. New designed structure for high current proof.
3. Small package from suitable structure using simulation.

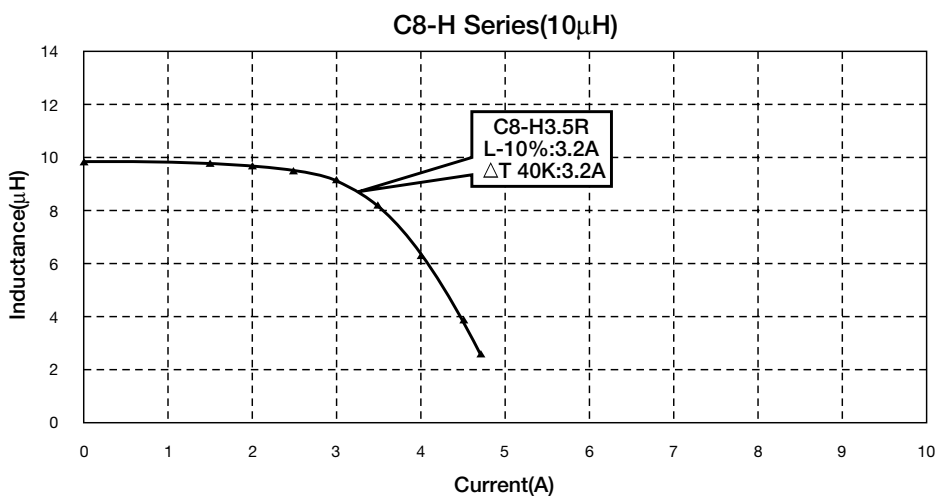
Item	Model Name	C8-H	C8-H	C10-H	C10-H	C12-H	C12-H
		3.5R	5R	3.5R	5R	3R	5R
Inductance Range		0.6~10μH	0.7~4.7μH	0.5~11μH	0.6~10μH	0.6~10μH	0.5~10μH
Rated Current		6A max.	6.4A max.	8A max.	8A max.	11.5A max.	13.6A max.
DC Resistance		85mΩ max.	20mΩ max.	54mΩ max.	26mΩ max.	54mΩ max.	29mΩ max.
Operational Frequency		10~500kHz	10~500kHz	10~500kHz	10~500kHz	10~500kHz	10~500kHz
Pcs/Reel		1000	1000	800	500	800	500

## USES

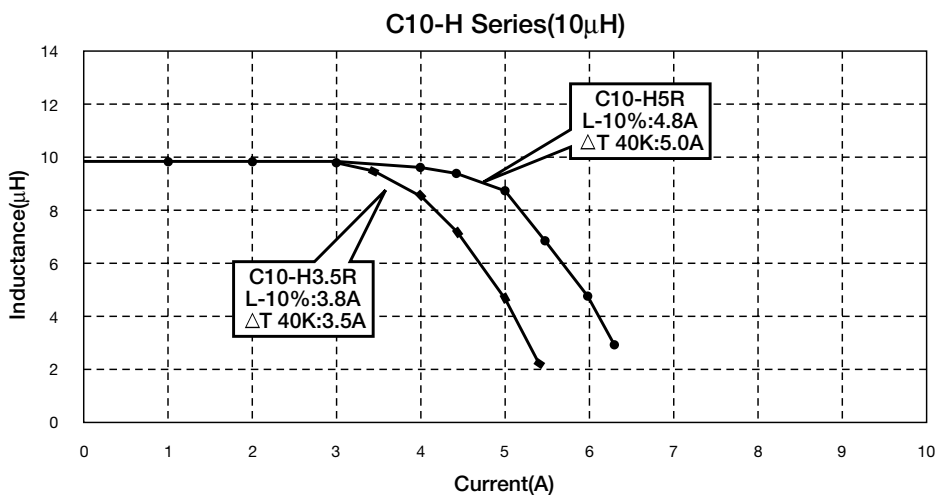
DC/DC converter for CPU in note PC or amusement equipment.

# CHARACTERISTICS

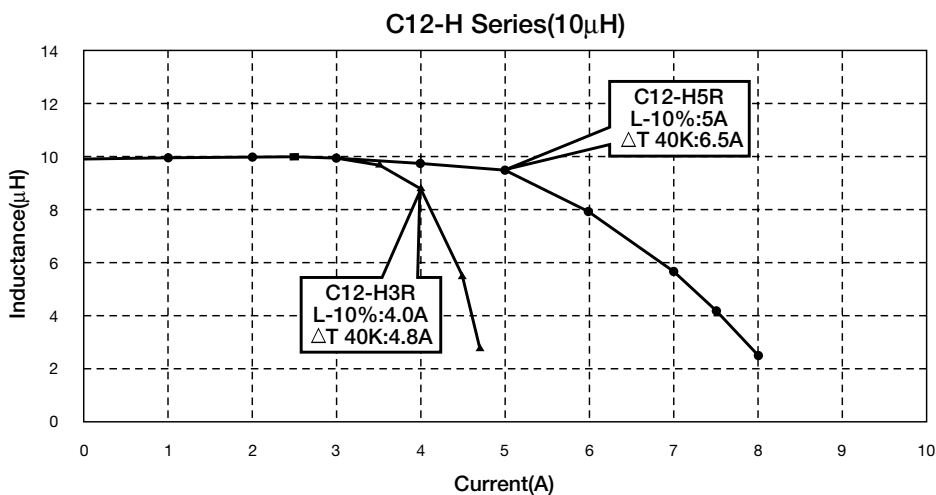
## C8-H Series



## C10-H Series



## C12-H Series



**DATA LIST (C8-H Series)**

**C8-H3.5R**

Distinctive Name	Marking	Inductance		DC Resistance		Rated Current*		
		(μH)	Tolerance (%)	(mΩ)		(A)		
				max.	typ.	Max. Current	L-10% typ.	Δt 40K typ.
CJ	0R6	0.6	±30	10.5	8.0	6.0	7.5	9.0
DA	1R0	1.0	±30	13.0	10.0	5.4	6.7	8.0
DD	1R5	1.5	±30	20.0	16.0	4.3	5.5	6.8
DF	2R2	2.2	±30	31	24	4.1	5.2	6.5
DG	3R3	3.3	±30	35	27	3.9	4.9	4.5
DJ	4R7	4.7	±30	46	35	3.1	4.0	4.0
DK	6R2	6.2	±30	52	40	2.9	3.7	3.7
DM	7R9	7.9	±30	67	52	2.7	3.5	3.4
EA	100	10	±20	85	65	2.4	3.2	3.2

**C8-H5R**

Distinctive Name	Marking	Inductance		DC Resistance		Rated Current*		
		(μH)	Tolerance (%)	(mΩ)		(A)		
				max.	typ.	Max. Current	L-10% typ.	Δt 40K typ.
CK	0.7	0.7	±30	4.0	3.1	6.4	8.0	10.0
DA	1R0	1.0	±30	6.2	4.8	5.6	7.0	9.0
DC	1R6	1.6	±30	7.5	5.8	5.2	6.5	8.1
DF	2R7	2.7	±30	10.8	8.3	4.4	5.5	7.0
DH	3R7	3.7	±30	14.8	11	4.2	5.2	5.0
DJ	4R7	4.7	±30	20	15	3.8	4.7	4.9

\* Max. current is rated current we guarantee inductance saturation -10% and temperature rising 40K.

**DATA LIST (C10-H Series)**

**C10-H3.5R**

Distinctive Name	Marking	Inductance		DC Resistance		Rated Current*		
		(μH)	Tolerance (%)	(mΩ)		(A)		
				max.	typ.	Max. Current	L-10% typ.	Δt 40K typ.
CH	0R5	0.5	±30	4.7	3.6	8.0	10.0	9.3
DA	1R0	1.0	±30	11.0	8.0	7.2	9.0	9.0
DC	1R5	1.5	±30	13.0	10.0	6.4	8.0	8.2
DE	2R2	2.2	±30	14.0	11.2	6.0	7.5	8.0
DG	3R3	3.3	±30	17	13.1	5.4	6.7	6.7
DJ	4R7	4.7	±30	46	35	4.2	5.3	6.5
DK	5R6	5.6	±30	47	36	4.0	5.0	6.0
DL	7R3	7.3	±30	44	34	3.7	4.6	5.7
DM	8R9	8.9	±30	49	38	3.4	4.2	5.5
EA	110	11	±20	54	45	3.0	3.8	5.0

**C10-H5R**

Distinctive Name	Marking	Inductance		DC Resistance		Rated Current*		
		(μH)	Tolerance (%)	(mΩ)		(A)		
				max.	typ.	Max. Current	L-10% typ.	Δt 40K typ.
CJ	0R6	0.6	±30	3.3	2.5	8.0	13.0	10.0
DA	1R0	1.1	±30	4.8	3.7	7.5	12.0	9.5
DC	1R6	1.6	±30	6.8	5.2	7.0	10.5	9.0
DF	2R7	2.7	±30	9	7	6.5	9.2	8.5
DG	3R4	3.4	±30	10	7.9	5.8	8.0	7.5
DJ	4R7	4.7	±30	14	11	5.2	6.5	6.5
DK	5R9	5.9	±30	20	15	4.8	6.0	6.0
DM	7R5	7.5	±30	22	17	4.2	5.3	5.5
EA	100	10	±20	26	20	3.8	4.8	5.0

\* Max. current is rated current we guarantee inductance saturation -10% and temperature rising 40K.

**DATA LIST (C12-H Series)**

**C12-H3R**

Distinctive Name	Marking	Inductance		DC Resistance		Rated Current*		
		(μH)	Tolerance (%)	(mΩ)		(A)		
				max.	typ.	Max. Current	L-10% typ.	Δt 40K typ.
CJ	0R6	0.6	±30	5.1	3.9	11.5	13.0	13.5
DA	1R0	1.0	±30	6.0	4.2	8.5	11.0	12.0
DD	1R8	1.8	±30	8.8	7.4	7.8	9.2	10.5
DF	2R7	2.7	±30	13	9.8	5.8	7.0	7.5
DH	3R9	3.9	±30	20	15	4.2	5.7	6.2
DJ	4R7	4.7	±30	29	23	3.5	4.7	6.0
DL	6R8	6.8	±30	42	32	3.4	4.3	4.8
DM	8R1	8.1	±30	46	35	3.2	4.0	4.5
EA	100	10	±20	54	41	3.0	3.8	4.2

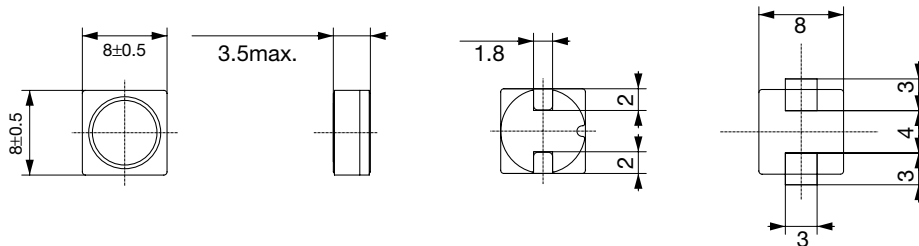
**C12-H5R**

Distinctive Name	Marking	Inductance		DC Resistance		Rated Current*		
		(μH)	Tolerance (%)	(mΩ)		(A)		
				max.	typ.	Max. Current	L-10% typ.	Δt 40K typ.
CH	0R5	0.5	±30	3.3	2.5	13.6	17.0	19.0
DA	1R1	1.1	±30	3.9	3.0	12.4	15.5	17.0
DC	1R5	1.5	±30	6.1	4.7	10.4	13.0	14.0
DE	2R4	2.4	±30	8.6	6.6	8.8	11.0	11.5
DG	3R1	3.1	±30	9.8	7.5	7.3	10.5	9.5
DJ	5R0	5.0	±30	16	12	6.4	8.0	8.5
DL	6R8	6.8	±30	21	16	5.6	7.0	7.5
DM	8R4	8.4	±30	24	18	4.8	6.0	7.0
EA	100	10	±20	29	22	4.6	5.7	6.5

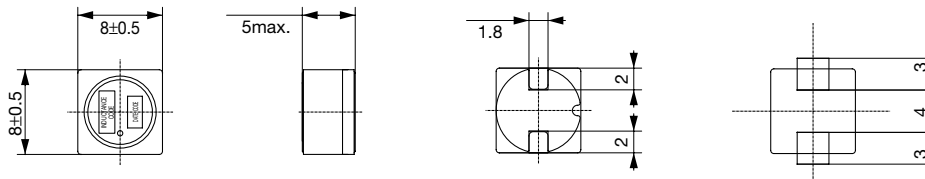
\* Max. current is rated current we guarantee inductance saturation -10% and temperature rising 40K.

**DIMENSIONS**

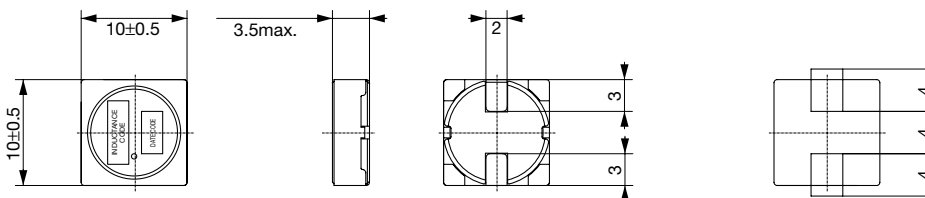
C8-H3.5R



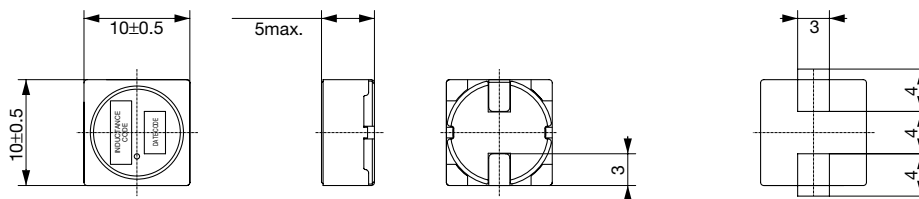
C8-H5R



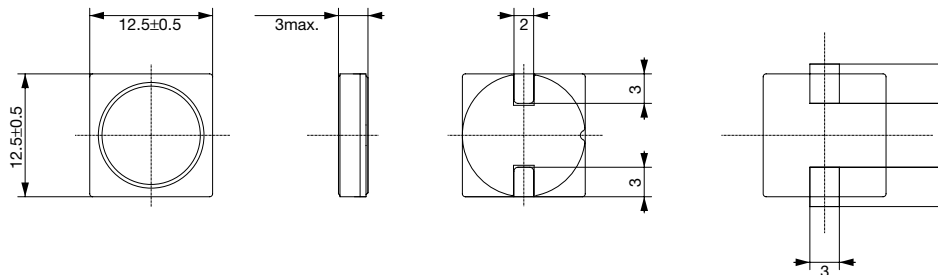
C10-H3.5R



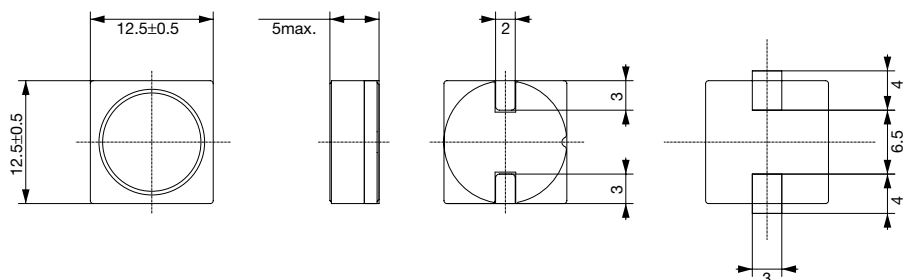
C10-H5R



C12-H3R



C12-H5R



Unit : mm