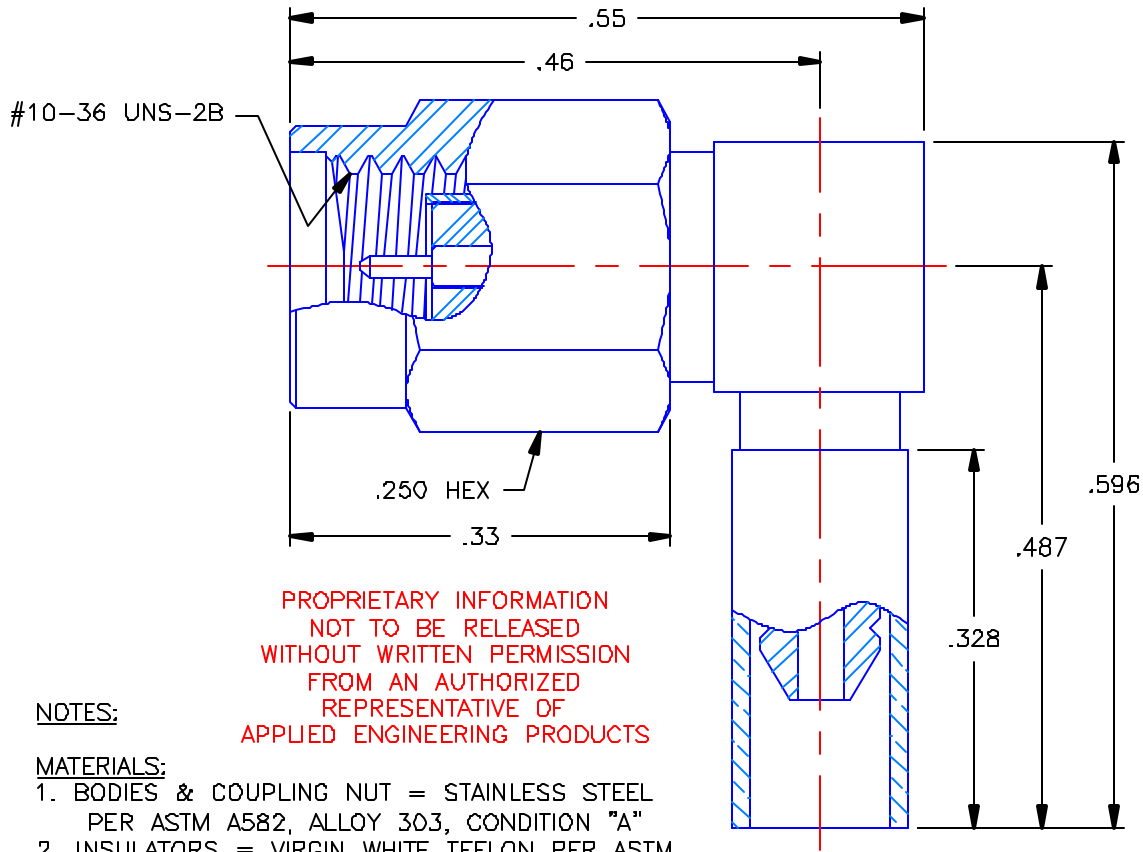


REVISIONS			
REV	DESCRIPTION	DATE	APPROVED
-	INITIAL RELEASE	04/14/04	A.D.M.



PROPRIETARY INFORMATION
 NOT TO BE RELEASED
 WITHOUT WRITTEN PERMISSION
 FROM AN AUTHORIZED
 REPRESENTATIVE OF
 APPLIED ENGINEERING PRODUCTS

NOTES:

MATERIALS:


1. BODIES & COUPLING NUT = STAINLESS STEEL PER ASTM A582, ALLOY 303, CONDITION "A"
2. INSULATORS = VIRGIN WHITE TEFLON PER ASTM D1710, GRADE 1, TYPE I, CLASS "B".
3. CONTACT & RETAINING RING = BERYLLIUM COPPER PER ASTM B196, ALLOY C17300, TEMPER TD04.
4. GASKET = SILICONE RUBBER PER ZZ-R-765, CLASS 2B, GRADE 65-75.
5. CAP = BRASS PER ASTM B16, ALLOY C36000, TEMPER H02.
6. CRIMP SLEEVE = SEAMLESS LOWLEAD BRASS TUBE, ALLOY 330, SOFT ANNEAL TEMPER, .025/.060 GRAIN SIZE OR SEAMLESS COPPER TUBE PER ASTM B75, TYPE C12000, TEMPER: LIGHT ANNEAL 050 EXCEPT YIELD STRENGTH.

FINISHES:

1. BODIES = GOLD PLATE PER MIL-G-45204, TYPE II, CLASS 0, GRADE C, OVER .000050 TO .00010 STRESS FREE NICKEL PER QQ-N-290.
2. CONTACT = GOLD PLATE PER MIL-G-45204, TYPE II, CLASS 1, GRADE C, OVER .00010 TO .00020 STRESS FREE SULFAMATE NICKEL PER QQ-N-290.
3. CRIMP SLEEVE & CAP = GOLD PLATE PER MIL-G-45204, TYPE II, CLASS 0, GRADE C, OVER .00010 TO .00020 COPPER STRIKE PER MIL-C-14550
4. COUPLING NUT = PASSIVATE PER QQ-P-35, TYPE VI.

PER MIL-PRF-39012:

- RF LEAKAGE: 90 Db MIN, 2-3 GHz
- DURABILITY: 500 MATING CYCLES
- COUPLING RETENTION: 60 LBS
- CONTACT RETENTION: 4 LBS MIN

UNLESS OTHERWISE SPECIFIED DIMENSIONS ARE IN INCHES TOLERANCES ON		DWN. A.D.M.	DATE 04/13/04	 APPLIED ENGINEERING PRODUCTS 104 John W. Murphy Dr. New Haven, CT 06513				
		CHKD: D.N.	DATE 04/14/04					
DECIMAL	ANGLE	APVD: D.J.C.	DATE 04/14/04	SSMA RIGHT ANGLE PLUG CRIMP TYPE FOR RG-178 CABLE				
REFERENCE:		MATERIALS & FINISHES: SEE NOTES		<table border="1" style="width: 100%;"> <tr> <td>SIZE A</td> <td>FSCM NO 19505</td> <td>DWG. NO. 9765-1523-002</td> <td>REV -</td> </tr> </table>	SIZE A	FSCM NO 19505	DWG. NO. 9765-1523-002	REV -
SIZE A	FSCM NO 19505	DWG. NO. 9765-1523-002	REV -					
ORIGINATOR: A.D.M. DATE: 04/13/04		SCALE 6:1		SHEET 1 OF 1				

9765-1523-002