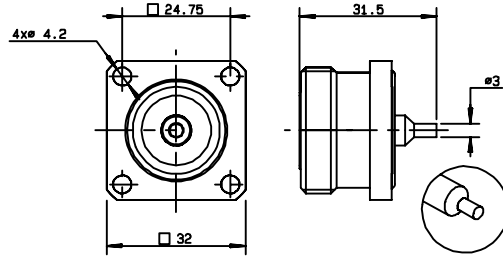


STRAIGHT FLANGE FEMALE RECEPTACLES



part number	capt. center cont.	panel	finish	slotted outer contact	packaging	note
R185 404 300*	yes	P04	Silver+Copper	no	Unit	panel seal - straight terminal

STRAIGHT FLANGE MALE RECEPTACLES

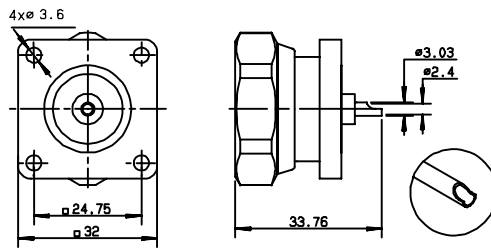


Fig 1

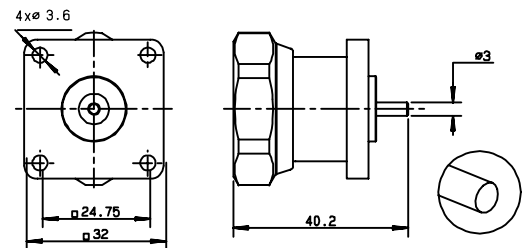
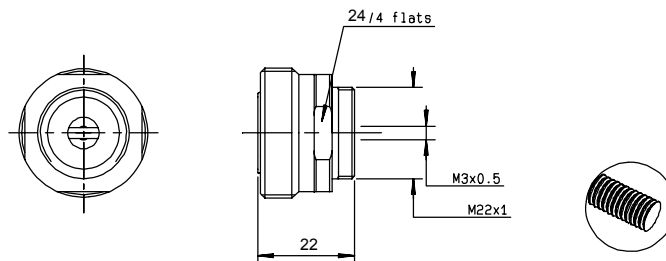


Fig 2

part number	fig	capt. center cont.	panel	finish	packaging	note
R185 440 100*	1	yes	P05	Silver+Copper	20	solder pot
R185 441 200*	2	yes	P06	Silver+Copper	20	straight terminal

STRAIGHT FEMALE RECEPTACLES WITH THREADED CONTACT



part number	capt. center cont.	finish	packaging	note
R185 560 020*	yes	BBR+Silver	20	screw-on

• Manufactured upon request

Note : standard packaging = 20 pieces. For unit packaging, add "W" after the P/N.

