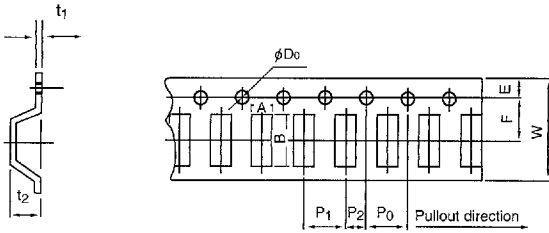


**Tape and Reel Chip Tantalum Electrolytic Capacitors**

■ Series SK, SK2, SK3, SK4, SK5, SK6, SKF

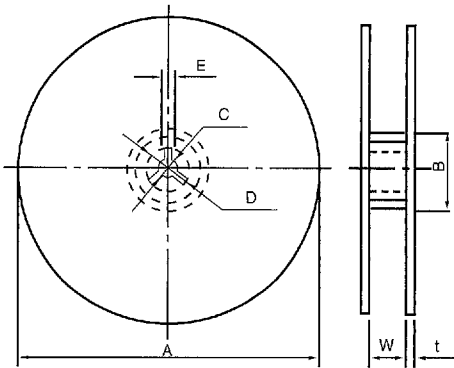
■ Carrier Tape Dimension



unit: mm

EIA CASE Code	A±0.2	B±0.2	t±0.2	W±0.3	F±0.1	P1±0.1	E±0.1	P2±0.1	P0±0.1	Do±0.1	t1
3216L	1.9	3.5	1.8	8.0	3.5	4.0	1.8	2.0	4.0	1.5	0.2 0.3
3216 (A)	1.9	3.5	2.3								
3528 (B)	3.3	3.8	2.6	12.0	5.5	8.0	1.8	2.0	4.0	1.5	0.2 0.3
6032 (C)	3.7	6.4	3.2								
7343 (D)	4.8	7.7	3.5								
5846 (N)	5.1	6.2	3.9								

■ Reel Dimension



unit: mm

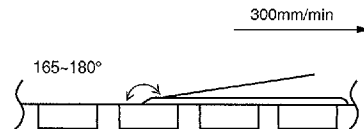
EIA CASE Code	Tape wide	A±2	B≥	C±0.5	D±0.5	E±0.5	W±1.5	t±0.5
3216L, 3216 (A), 3528 (B)	8mm	178	60	13.0	21.0	2.0	10.0	2.0
6032 (C), 7343 (D), 5846 (N)	12mm	178	60	13.0	21.0	2.0	14.0	2.0

■ Standard Packaging Quantity

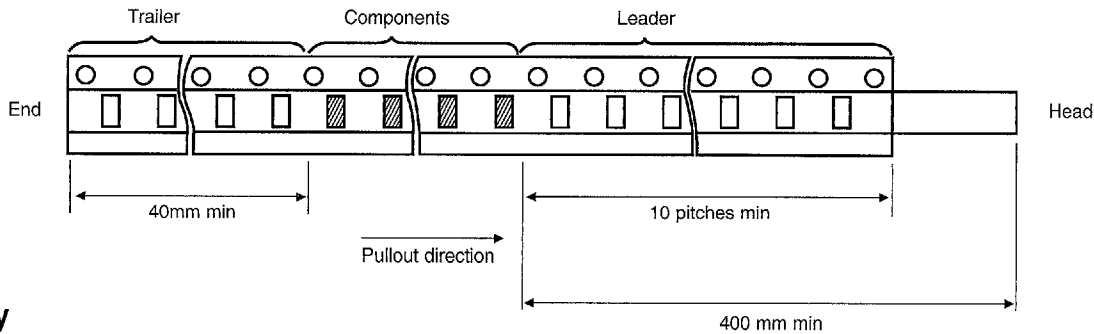
EIA CASE Code	Qty (PCS/reel)
3216L	3000
3216 (A), 3528 (B)	2000
6832 (C), 7343 (D), 5846 (N)	500

■ Sealing Tape Reel Strength

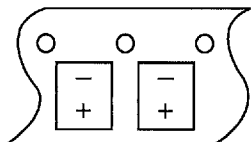
Peel angle: 165 to 180°C referred to the surface on which the tape is glued  
 Peel speed: 300mm per minute  
 The peel strength must be 0.1 to 0.7N under these conditions.



■ Tape Leader and Trailer Dimension



■ Polarity



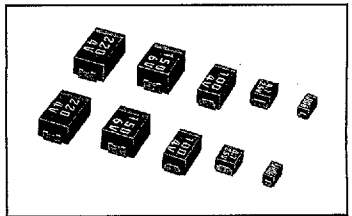
Installation & Taping

**SK, SK2, SK3, SK4, SK5, SK6, SKF Chip Type Tantalum Electrolytic Capacitors (CHIPCON®)**

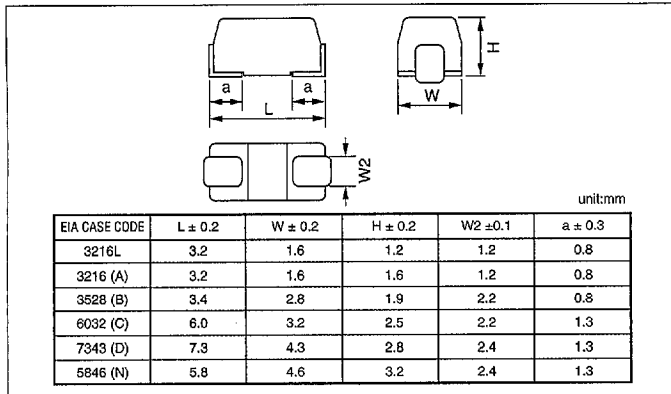
Photo

**Series SK, SK2, SK3, SK4, SK5, SK6, SKF Chip Type Tantalum Electrolytic Capacitors**

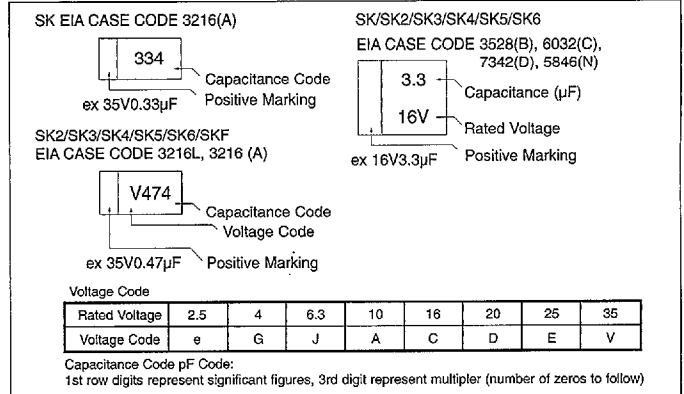
- Ultra miniature resin mold chip type.
- 260°C, 5 sec. dip soldering, and 240°C reflow soldering possible.
- For automatic insertion by being taped.



■ Outline Drawing



■ Marking



■ Specifications

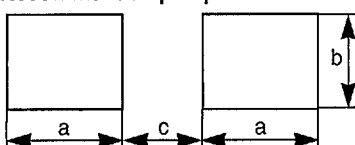
No.	Item	Performance																									
1	Operating temp. range (°C)	-55 to +125																									
2	Leakage current (μA)	Less than 0.01 CV or 0.5 whichever is larger (after five minutes) C: Capacitance (μF), V: Voltage (V)																									
3	Capacitance tolerance (%)	±10 (K), ±20 (M)																									
4	Tangent of loss angle (tan δ) (120 Hz)	<table border="1"> <thead> <tr> <th></th> <th>SK, SK2</th> <th>SK3, SK4, SK5</th> <th>SK6</th> <th>SKF</th> </tr> </thead> <tbody> <tr> <td>Less than 1μF</td> <td>less than 0.04</td> <td>less than 0.04</td> <td>—</td> <td>less than 0.08</td> </tr> <tr> <td>1.5μF~22μF</td> <td>less than 0.06</td> <td>less than 0.06</td> <td>less than 0.08</td> <td>less than 0.08</td> </tr> <tr> <td>33μF~68μF</td> <td>less than 0.06</td> <td>less than 0.08</td> <td>less than 0.08</td> <td>less than 0.08</td> </tr> <tr> <td>More than 100μF</td> <td>less than 0.06</td> <td>less than 0.08</td> <td>less than 0.08</td> <td>—</td> </tr> </tbody> </table>		SK, SK2	SK3, SK4, SK5	SK6	SKF	Less than 1μF	less than 0.04	less than 0.04	—	less than 0.08	1.5μF~22μF	less than 0.06	less than 0.06	less than 0.08	less than 0.08	33μF~68μF	less than 0.06	less than 0.08	less than 0.08	less than 0.08	More than 100μF	less than 0.06	less than 0.08	less than 0.08	—
			SK, SK2	SK3, SK4, SK5	SK6	SKF																					
		Less than 1μF	less than 0.04	less than 0.04	—	less than 0.08																					
		1.5μF~22μF	less than 0.06	less than 0.06	less than 0.08	less than 0.08																					
33μF~68μF	less than 0.06	less than 0.08	less than 0.08	less than 0.08																							
More than 100μF	less than 0.06	less than 0.08	less than 0.08	—																							
4V~35V																											
2.5V	less than 0.06	less than 0.08	—	less than 0.08																							
5	Soldering heat resistance (260°C)	Test time	5 sec																								
		Leakage current	Initial specified value or less																								
		Change in capacitance	Within ±5% of initial value																								
		tan δ	Initial specified value or less																								
6	Stability at low and high temperature	Temperature	-55°C	+85°C	+125 °C*																						
		Leakage current	—	Less than 0.1 CV or 5 μA whichever is larger	Less than 0.125 CV or 6.25 μA whichever is larger																						
		Change in capacitance	-10% or less**	+10% or less**	+12% or less**																						
		tan δ	Initial specified value	+0.2 or less	Initial specified value +0.03 or less																						
7	Endurance (85°C)	Test time	2000 hrs																								
		Leakage current	Initial specified value or less																								
		Change in capacitance	Within ±10% of initial value																								
		tan δ	Initial specified value or less																								
8	Moisture resistance (40°C) (90 to 95% RH)	Test time	500 hrs																								
		Leakage current	Initial specified value or less																								
		Change in capacitance	Within ±5% of initial value																								
		tan δ	Initial specified value or less																								
9	Others	Conforms to JIS C 5143.																									

\* Derated voltage at 125°C    \*\* When compare to the initial measurement value.

■ The correlation among rated voltage and derated voltage at 125°C

Rated voltage (V)	2.5	4	6.3	10	16	20	25	35
125°C Derated voltage (V)	1.6	2.5	4	6.3	10	13	16	22

■ Recommended pad pattern and size



EIA CASE CODE	a		b	c
	Dip soldering	Reflow soldering		
3216L	2.9mm	1.6mm	1.7mm	1.2mm
3216 (A)	2.9mm	1.6mm	1.7mm	1.2mm
3528 (B)	3.0mm	1.6mm	2.7mm	1.5mm
6032 (C)	4.1mm	2.4mm	2.7mm	2.4mm
7343 (D)	5.2mm	2.4mm	2.9mm	3.7mm
5846 (N)	5.4mm	2.4mm	2.9mm	2.4mm

SK, SK2, SK3, SK4, SK5, SK6, SKF

Tantalum

**SK, SK2, SK3, SK4, SK5, SK6, SKF Chip Type Tantalum Electrolytic Capacitors (CHIPCON®)**

**Standard Ratings**

WV(V) Cap.(µF)	2.5	4	6.3	10	16	20	25	35
0.10						S		A
0.15						S		A
0.22						S		A
0.33						S		A
0.47						S	A	A,B
0.68					S	S,A	A	A,B
1.0				S	S,A	S,A	A	A,B
1.5			S	S,A	S,A	S,A	A,B	B,C
2.2		S	S,A	S,A	S,A	A,B	A,B	B,C
3.3		S,A	S,A	S,A	A,B	A,B	B	C
4.7	S	S,A	S,A	S,A,B	A,B	B	B,C	C,D,N
6.8	S	S,A	S,A,B	A,B	B	B,C	C	C,D,N
10	S	S,A,B	S,A,B	A,B	B,C	C	C,D,N	D,N
15	S,A	S,A,B	A,B	B,C	B,C	C,D,N	D,N	D,N
22	S,A	A,B	A,B,C	B,C	C,D,N	D,N	D,N	
33	A	A,B,C	B,C	C,D,N	C,D,N	D,N		
47		B,C	B,C,D,N	C,D,N	D,N			
68		B,C,D,N	C,D,N	D,N	D,N			
100		C,D,N	D,N	D,N				
150		D,N	D,N					
220		D,N						

	EIA CASE CODE	Case Size (mm)
S	3216L	3.2 x 1.6 x 1.2
A	3216	3.2 x 1.6 x 1.6
B	3528	3.4 x 2.8 x 1.9
C	6032	6.0 x 3.2 x 2.5
D	7343	7.3 x 4.3 x 2.8
N	5846	5.8 x 4.6 x 3.2

SK, SK2, SK3,  
SK4, SK5, SK6, SKF

Tantalum

**SK, SK2, SK3, SK4, SK5, SKF Chip Type Tantalum Electrolytic Capacitors (CHIPCON®)**

**Standard Ratings**

ELNA PART NO.	CAP. (μF)	EIA CASE CODE	SIZE LxWxH (mm)	Leakage Current	tan δ 120 Hz	ESR 100kHz
<b>2.5 V</b>						
SKF-0E475M-RA2	4.7	3216L	3.2 x 1.6 x 1.2	0.5	0.08	10
SKF-0E685M-RA2	6.8	3216L	3.2 x 1.6 x 1.2	0.5	0.08	10
SKF-0E106M-RA2	10	3216L	3.2 x 1.6 x 1.2	0.5	0.08	10
SKF-0E156M-RA2		3216L	3.2 x 1.6 x 1.2	0.5	0.08	10
SK3-0E156M-RA	15	3216(A)	3.2 x 1.6 x 1.6	0.5	0.08	4.0
SKF-0E226M-RA2		3216L	3.2 x 1.6 x 1.2	0.55	0.08	4.0
SK4-0E226M-RA	22	3216(A)	3.2 x 1.6 x 1.6	0.55	0.06	3.0
SK5-0E336M-RA	33	3216(A)	3.2 x 1.6 x 1.6	0.8	0.08	4.0
<b>4 V</b>						
SKF-0G225M-RA2	2.2	3216L	3.2 x 1.6 x 1.2	0.5	0.08	10
SKF-0G335M-RA2	3.3	3216L	3.2 x 1.6 x 1.2	0.5	0.08	10
SK-0G335M-RA		3216(A)	3.2 x 1.6 x 1.6	0.5	0.06	8.0
SKF-0G475M-RA2	4.7	3216L	3.2 x 1.6 x 1.2	0.5	0.08	10
SK2-0G475M-RA		3216(A)	3.2 x 1.6 x 1.6	0.5	0.06	7.0
SKF-0G685M-RA2	6.8	3216L	3.2 x 1.6 x 1.2	0.5	0.08	10
SK2-0G685M-RA		3216(A)	3.2 x 1.6 x 1.6	0.5	0.06	4.0
SKF-0G106M-RA2	10	3216L	3.2 x 1.6 x 1.2	0.5	0.08	10
SK3-0G106M-RA		3216(A)	3.2 x 1.6 x 1.6	0.5	0.06	4.5
SK-0G106M-RB		3528(B)	3.4 x 2.8 x 1.9	0.5	0.06	2.5
SKF-0G156M-RA2	15	3216L	3.2 x 1.6 x 1.2	0.6	0.08	4.0
SK4-0G156M-RA		3216(A)	3.2 x 1.6 x 1.6	0.6	0.06	3.0
SK2-0G156M-RB		3528(B)	3.4 x 2.8 x 1.9	0.6	0.06	3.0
SK5-0G226M-RA	22	3216(A)	3.2 x 1.6 x 1.6	0.88	0.08	3.0
SK3-0G226M-RB		3528(B)	3.4 x 2.8 x 1.9	0.88	0.06	1.5
SK6-0G336M-RA	33	3216(A)	3.2 x 1.6 x 1.2	1.32	0.08	4.0
SK4-0G336M-RB		3528(B)	3.4 x 2.8 x 1.9	1.32	0.08	2.0
SK-0G336M-RC		6032(C)	6.0 x 3.2 x 2.5	1.32	0.06	1.0
SK5-0G476M-RB	47	3528(B)	3.4 x 2.8 x 1.9	1.88	0.08	2.0
SK2-0G476M-RC		6032(C)	6.0 x 3.2 x 2.5	1.88	0.06	1.0
SK6-0G686M-RB	68	3528(B)	3.4 x 2.8 x 1.9	2.72	0.08	2.8
SK3-0G686M-RC		6032(C)	6.0 x 3.2 x 2.5	2.72	0.08	1.0
SK-0G686M-RD0		7343(D)	7.3 x 4.3 x 2.8	2.72	0.06	0.7
SK-0G686M-RD		5846(N)	5.8 x 4.6 x 3.2	2.72	0.06	0.7
SK4-0G107M-RC	100	6032(C)	6.0 x 3.2 x 2.5	4.0	0.08	1.5
SK2-0G107M-RD0		7343(D)	7.3 x 4.3 x 2.8	4.0	0.06	0.8
SK2-0G107M-RD		5846(N)	5.8 x 4.6 x 3.2	4.0	0.06	0.8
SK3-0G157M-RD0	150	7343(D)	7.3 x 4.3 x 2.8	6.0	0.08	0.8
SK3-0G157M-RD		5846(N)	5.8 x 4.6 x 3.2	6.0	0.08	0.8

ELNA PART NO.	CAP. (μF)	EIA CASE CODE	SIZE LxWxH (mm)	Leakage Current	tan δ 120 Hz	ESR 100kHz
SK4-0G227M-RD0	220	7343(D)	7.3 x 4.3 x 2.8	8.8	0.08	1.0
SK4-0G227M-RD		5846(N)	5.8 x 4.6 x 3.2	8.8	0.08	1.0
<b>6.3 V</b>						
SKF-0J155M-RA2	1.5	3216L	3.2 x 1.6 x 1.2	0.5	0.08	15
SKF-0J225M-RA2	2.2	3216L	3.2 x 1.6 x 1.2	0.5	0.08	10
SK-0J225M-RA		3216(A)	3.2 x 1.6 x 1.6	0.5	0.06	8.0
SKF-0J335M-RA2	3.3	3216L	3.2 x 1.6 x 1.2	0.5	0.08	10
SK2-0J335M-RA		3216(A)	3.2 x 1.6 x 1.6	0.5	0.06	7.0
SKF-0J475M-RA2	4.7	3216L	3.2 x 1.6 x 1.2	0.5	0.08	10
SK2-0J475M-RA		3216(A)	3.2 x 1.6 x 1.6	0.5	0.06	4.0
SKF-0J685M-RA2	6.8	3216L	3.2 x 1.6 x 1.2	0.5	0.08	10
SK3-0J685M-RA		3216(A)	3.2 x 1.6 x 1.6	0.5	0.06	4.5
SK-0J685M-RB		3528(B)	3.4 x 2.8 x 1.9	0.5	0.06	2.5
SKF-0J106M-RA2	10	3216L	3.2 x 1.6 x 1.2	0.63	0.08	4.0
SK4-0J106M-RA		3216(A)	3.2 x 1.6 x 1.6	0.63	0.06	3.0
SK2-0J106M-RB		3528(B)	3.4 x 2.8 x 1.9	0.63	0.06	3.0
SK5-0J156M-RA	15	3216(A)	3.2 x 1.6 x 1.6	0.94	0.06	3.0
SK3-0J156M-RB		3528(B)	3.4 x 2.8 x 1.9	0.94	0.06	1.5
SK6-0J226M-RA	22	3216(A)	3.2 x 1.6 x 1.6	1.38	0.08	4.0
SK4-0J226M-RB		3528(B)	3.4 x 2.8 x 1.9	1.38	0.06	2.0
SK-0J226M-RC		6032(C)	6.0 x 3.2 x 2.5	1.38	0.06	1.0
SK5-0J336M-RB	33	3528(B)	3.4 x 2.8 x 1.9	2.07	0.08	2.0
SK2-0J336M-RC		6032(C)	6.0 x 3.2 x 2.5	2.07	0.06	1.0
SK6-0J476M-RB	47	3528(B)	3.4 x 2.8 x 1.9	2.96	0.08	2.8
SK3-0J476M-RC		6032(C)	6.0 x 3.2 x 2.5	2.96	0.08	1.0
SK-0J476M-RD0		7343(D)	7.3 x 4.3 x 2.8	2.96	0.06	0.7
SK-0J476M-RD		5846(N)	5.8 x 4.6 x 3.2	2.96	0.06	0.7
SK4-0J686M-RC	68	6032(C)	6.0 x 3.2 x 2.5	4.28	0.08	1.5
SK2-0J686M-RD0		7343(D)	7.3 x 4.3 x 2.8	4.28	0.06	0.8
SK2-0J686M-RD		5846(N)	5.8 x 4.6 x 3.2	4.28	0.06	0.8
SK3-0J107M-RD0	100	7343(D)	7.3 x 4.3 x 2.8	6.3	0.08	0.8
SK3-0J107M-RD		5846(N)	5.8 x 4.6 x 3.2	6.3	0.08	0.8
SK4-0J157M-RD0	150	7343(D)	7.3 x 4.3 x 2.8	9.4	0.08	1.0
SK4-0J157M-RD		5846(N)	5.8 x 4.6 x 3.2	9.4	0.08	1.0
<b>10 V</b>						
SKF-1A105M-RA2	1.0	3216L	3.2 x 1.6 x 1.2	0.5	0.08	15
SKF-1A155M-RA2	1.5	3216L	3.2 x 1.6 x 1.2	0.5	0.08	15
SK-1A155M-RA		3216(A)	3.2 x 1.6 x 1.6	0.5	0.06	8.0
SKF-1A225M-RA2	2.2	3216L	3.2 x 1.6 x 1.2	0.5	0.08	10

SK, SK2, SK3, SK4, SK5, SK6, SKF

Tantalum

**SK, SK2, SK3, SK4, SK5, SKF Chip Type Tantalum Electrolytic Capacitors (CHIPCON®)**

**Standard Ratings**

ELNA PART NO.	CAP. (μF)	EIA CASE CODE	SIZE LxWxH (mm)	Leakage Current	tan δ 120 Hz	ESR 100kHz
SK2-1A225M-RA		3216(A)	3.2 x 1.6 x 1.6	0.5	0.06	7.0
SKF-1A335M-RA2	3.3	3216L	3.2 x 1.6 x 1.2	0.5	0.08	10
SK2-1A335M-RA		3216(A)	3.2 x 1.6 x 1.6	0.5	0.06	4.0
SKF-1A475M-RA2	4.7	3216L	3.2 x 1.6 x 1.2	0.5	0.08	10
SK3-1A475M-RA		3216(A)	3.2 x 1.6 x 1.6	0.5	0.06	4.5
SK-1A475M-RB		3528(B)	3.4 x 2.8 x 1.9	0.5	0.06	3.0
SK4-1A685M-RA	6.8	3216(A)	3.2 x 1.6 x 1.6	0.68	0.06	3.0
SK2-1A685M-RB		3528(B)	3.4 x 2.8 x 1.9	0.68	0.06	3.0
SK5-1A106M-RA	10	3216(A)	3.2 x 1.6 x 1.6	1.0	0.06	3.0
SK3-1A106M-RB		3528(B)	3.4 x 2.8 x 1.9	1.0	0.06	1.5
SK4-1A156M-RB	15	3528(B)	3.4 x 2.8 x 1.9	1.5	0.06	2.0
SK-1A156M-RC		6032(C)	6.0 x 3.2 x 2.5	1.5	0.06	1.0
SK5-1A226M-RB	22	3528(B)	3.4 x 2.8 x 1.9	2.2	0.06	2.0
SK2-1A226M-RC		6032(C)	6.0 x 3.2 x 2.5	2.2	0.06	1.0
SK3-1A336M-RC	33	6032(C)	6.0 x 3.2 x 2.5	3.3	0.08	1.0
SK-1A336M-RD0		7343(D)	7.3 x 4.3 x 2.8	3.3	0.06	0.7
SK-1A336M-RD		5846(N)	5.8 x 4.6 x 3.2	3.3	0.06	0.7
SK4-1A476M-RC	47	6032(C)	6.0 x 3.2 x 2.5	4.7	0.08	1.5
SK2-1A476M-RD0		7343(D)	7.3 x 4.3 x 2.8	4.7	0.06	0.8
SK2-1A476M-RD		5846(N)	5.8 x 4.6 x 3.2	4.7	0.06	0.8
SK3-1A686M-RD0	68	7343(D)	7.3 x 4.3 x 2.8	6.8	0.08	0.8
SK3-1A686M-RD		5846(N)	5.8 x 4.6 x 3.2	6.8	0.08	0.8
SK4-1A107M-RD0	100	7343(D)	7.3 x 4.3 x 2.8	10.0	0.08	1.0
SK4-1A107M-RD		5846(N)	5.8 x 4.6 x 3.2	10.0	0.08	1.0
<b>16 V</b>						
SKF1C684M-RA2	0.68	3216L	3.2 x 1.6 x 1.2	0.5	0.08	20
SKF-1C105M-RA2	1	3216L	3.2 x 1.6 x 1.2	0.5	0.08	15
SK-1C105M-RA		3216(A)	3.2 x 1.6 x 1.6	0.5	0.04	8.0
SKF-1C155M-RA2	1.5	3216L	3.2 x 1.6 x 1.2	0.5	0.08	15
SK2-1C155M-RA		3216(A)	3.2 x 1.6 x 1.6	0.5	0.06	7.0
SKF-1C225M-RA2	2.2	3216L	3.2 x 1.6 x 1.2	0.5	0.08	10
SK2-1C225M-RA		3216(A)	3.2 x 1.6 x 1.6	0.5	0.06	4.0
SK3-1C335M-RA	3.3	3216(A)	3.2 x 1.6 x 1.6	0.5	0.06	4.5
SK-1C335M-RB		3528(B)	3.4 x 2.8 x 1.9	0.5	0.06	3.0
SK4-1C475M-RA	4.7	3216(A)	3.2 x 1.6 x 1.6	0.75	0.06	3.0
SK2-1C475M-RB		3528(B)	3.4 x 2.8 x 1.9	0.75	0.06	3.0
SK3-1C685M-RB	6.8	3528(B)	3.4 x 2.8 x 1.9	1.08	0.06	1.5
SK4-1C106M-RB	10	3528(B)	3.4 x 2.8 x 1.9	1.6	0.06	2.0
SK-1C106M-RC		6032(C)	6.0 x 3.2 x 2.5	1.6	0.06	1.0

ELNA PART NO.	CAP. (μF)	EIA CASE CODE	SIZE LxWxH (mm)	Leakage Current	tan δ 120 Hz	ESR 100kHz
SK5-1C156M-RB	15	3528(B)	3.4 x 2.8 x 1.9	2.4	0.06	2.0
SK2-1C156M-RC		6032(C)	6.0 x 3.2 x 2.5	2.4	0.06	1.0
SK2-1C226M-RC	22	6032(C)	6.0 x 3.2 x 2.5	3.52	0.06	1.0
SK-1C226M-RD0		7343(D)	7.3 x 4.3 x 2.8	3.52	0.06	0.7
SK-1C226M-RD		5846(N)	5.8 x 4.6 x 3.2	3.52	0.06	0.7
SK4-1C336M-RC	33	6032(C)	6.0 x 3.2 x 2.5	5.28	0.08	1.5
SK2-1C336M-RD0		7343(D)	7.3 x 4.3 x 2.8	5.28	0.06	0.8
SK2-1C336M-RD		5846(N)	5.8 x 4.6 x 3.2	5.28	0.06	0.8
SK3-1C476M-RD0	47	7343(D)	7.3 x 4.3 x 2.8	7.52	0.08	1.0
SK3-1C476M-RD		5846(N)	5.8 x 4.6 x 3.2	7.52	0.08	1.0
SK4-1C686M-RD0	68	7343(D)	7.3 x 4.3 x 2.8	10.8	0.08	1.0
SK4-1C686M-RD		5846(N)	5.8 x 4.6 x 3.2	10.8	0.08	1.0
<b>20 V</b>						
SKF-1D104M-RA2	0.1	3216L	3.2 x 1.6 x 1.2	0.5	0.08	30
SKF-1D154M-RA2	0.15	3216L	3.2 x 1.6 x 1.2	0.5	0.08	25
SKF-1D224M-RA2	0.22	3216L	3.2 x 1.6 x 1.2	0.5	0.08	23
SKF-1D334M-RA2	0.33	3216L	3.2 x 1.6 x 1.2	0.5	0.08	20
SKF-1D474M-RA2	0.47	3216L	3.2 x 1.6 x 1.2	0.5	0.08	20
SKF-1D684M-RA2	0.68	3216L	3.2 x 1.6 x 1.2	0.5	0.08	20
SK-1D684M-RA		3216(A)	3.2 x 1.6 x 1.6	0.5	0.04	10
SKF-1D105M-RA2	1	3216L	3.2 x 1.6 x 1.2	0.5	0.08	15
SK-1D105M-RA		3216(A)	3.2 x 1.6 x 1.6	0.5	0.04	7.0
SKF-1D155M-RA2	1.5	3216L	3.2 x 1.6 x 1.2	0.5	0.08	15
SK2-1D155M-RA		3216(A)	3.2 x 1.6 x 1.6	0.5	0.06	4.0
SK3-1D225M-RA	2.2	3216(A)	3.2 x 1.6 x 1.6	0.5	0.06	4.5
SK-1D225M-RB		3528(B)	3.4 x 2.8 x 1.9	0.5	0.06	3.0
SK4-1D335M-RA	3.3	3216(A)	3.2 x 1.6 x 1.6	0.66	0.06	3.0
SK2-1D335M-RB		3528(B)	3.4 x 2.8 x 1.9	0.66	0.06	3.0
SK3-1D475M-RB	4.7	3528(B)	3.4 x 2.8 x 1.9	0.94	0.06	2.0
SK4-1D685M-RB	6.8	3528(B)	3.4 x 2.8 x 1.9	1.34	0.06	2.0
SK-1D685M-RC		6032(C)	6.0 x 3.2 x 2.5	1.34	0.06	1.0
SK2-1D106M-RC	10	6032(C)	6.0 x 3.2 x 2.5	2.0	0.06	0.8
SK-1D156M-RC	15	6032(C)	6.0 x 3.2 x 2.5	3.0	0.06	1.0
SK-1S156M-RD0		7343(D)	7.3 x 4.3 x 2.8	3.0	0.06	0.8
SK-1D156M-RD		5846(N)	5.8 x 4.6 x 3.2	3.0	0.06	0.8
SK2-1D226M-RD0	22	7342(D)	7.3 x 4.3 x 2.8	4.4	0.06	0.6
SK2-1D226M-RD		5846(N)	5.8 x 4.6 x 3.2	4.4	0.06	0.6
SK3-1D336M-RD0	33	7343(D)	7.3 x 4.3 x 2.8	6.6	0.08	1.0
SK3-1D336M-RD		5846(N)	5.8 x 4.6 x 3.2	6.6	0.08	1.0

SK, SK2, SK3,  
SK4, SK5, SK6, SKF

Tantalum

**SK, SK2, SK3, SK4, SK5, SKF Chip Type Tantalum Electrolytic Capacitors (CHIPCON<sup>®</sup>)**

**Standard Ratings**

ELNA PART NO.	CAP. (μF)	EIA CASE CODE	SIZE LxWxH (mm)	Leakage Current	tan δ 120 Hz	ESR 100kHz
<b>25 V</b>						
SK-1E474M-RA	0.47	3216(A)	3.2 x 1.6 x 1.6	0.5	0.04	10.0
SK2-1E684M-RA	0.68	3216(A)	3.2 x 1.6 x 1.6	0.5	0.04	7.0
SK2-1E105M-RA	1	3216(A)	3.2 x 1.6 x 1.6	0.5	0.04	4.0
SK3-1E155M-RA	1.5	3216(A)	3.2 x 1.6 x 1.6	0.5	0.06	4.5
SK-1E155M-RB		3528(B)	3.4 x 2.8 x 1.9	0.5	0.06	3.0
SK4-1E225M-RA	2.2	3216(A)	3.2 x 1.6 x 1.6	0.55	0.06	4.5
SK2-1E225M-RB		3528(B)	3.4 x 2.8 x 1.9	0.55	0.06	3.0
SK3-1E335M-RB	3.3	3528(B)	3.4 x 2.8 x 1.9	0.82	0.06	2.0
SK4-1E475M-RB	4.7	3528(B)	3.4 x 2.8 x 1.9	1.17	0.06	2.0
SK-1E475M-RC		6032(C)	6.0 x 3.2 x 2.5	1.17	0.06	1.0
SK2-1E685M-RC	6.8	6032(C)	6.0 x 3.2 x 2.5	1.7	0.06	0.8
SK3-1E106M-RC	10	6032(C)	6.0 x 3.2 x 2.5	2.5	0.06	1.0
SK-1E106M-RD0		7343(D)	7.3 x 4.3 x 2.8	2.5	0.06	0.8
SK-1E106M-RD	15	5846(N)	5.8 x 4.6 x 3.2	2.5	0.06	0.8
SK2-1E156M-RD0		7343(D)	7.3 x 4.3 x 2.8	3.75	0.06	0.6
SK2-1E156M-RD	5846(N)	5.8 x 4.6 x 3.2	3.75	0.06	0.6	
SK3-1E226M-RD0	22	7343(D)	7.3 x 4.3 x 2.8	5.5	0.06	1.0
SK3-1E226M-RD		5846(N)	5.8 x 4.6 x 3.2	5.5	0.06	1.0
<b>35 V</b>						
SK-1V104M-RA	0.1	3216(A)	3.2 x 1.6 x 1.6	0.5	0.04	28.0
SK-1V154M-RA	0.15	3216(A)	3.2 x 1.6 x 1.6	0.5	0.04	23.5
SK-1V224M-RA	0.22	3216(A)	3.2 x 1.6 x 1.6	0.5	0.04	20
SK-1V334M-RA	0.33	3216(A)	3.2 x 1.6 x 1.6	0.5	0.04	15
SK2-1V474M-RA	0.47	3216(A)	3.2 x 1.6 x 1.6	0.5	0.04	10
SK-1V474M-RB		3528(B)	3.4 x 2.8 x 1.9	0.5	0.04	9.0
SK2-1V684M-RA	0.68	3216(A)	3.2 x 1.6 x 1.6	0.5	0.04	8.0
SK-1V684M-RB		3528(B)	3.4 x 2.8 x 1.9	0.5	0.04	8.0
SK3-1V105M-RA	1	3216(A)	3.2 x 1.6 x 1.6	0.5	0.04	6.0
SK-1V105M-RB		3528(B)	3.4 x 2.8 x 1.9	0.5	0.04	4.0
SK2-1V155M-RB	1.5	3528(B)	3.4 x 2.8 x 1.9	0.52	0.06	5.0
SK-1V155M-RC		6032(C)	6.0 x 3.2 x 2.5	0.52	0.06	4.0
SK3-1V225M-RB	2.2	3528(B)	3.4 x 2.8 x 1.9	0.77	0.06	4.0
SK-1V225M-RC		6032(C)	6.0 x 3.2 x 2.5	0.77	0.06	2.0
SK-1V335M-RC	3.3	6032(C)	6.0 x 3.2 x 2.5	1.15	0.06	1.0
SK2-1V475M-RC	4.7	6032(C)	6.0 x 3.2 x 2.5	1.65	0.06	0.8
SK-1V475M-RD0		7343(D)	7.3 x 4.3 x 2.8	1.65	0.06	0.8
SK-1V475M-RD	6.8	5846(N)	5.8 x 4.6 x 3.2	1.65	0.06	0.8
SK3-1V685M-RC		6032(C)	6.0 x 3.2 x 2.5	2.38	0.06	1.0

ELNA PART NO.	CAP. (μF)	EIA CASE CODE	SIZE LxWxH (mm)	Leakage Current	tan δ 120 Hz	ESR 100kHz
SK-1V685M-RD0	6.8	7343(D)	7.3 x 4.3 x 2.8	2.38	0.06	0.8
SK-1V685M-RD		5846(N)	5.8 x 4.6 x 3.2	2.38	0.06	0.8
SK2-1V106M-RD0	10	7343(D)	7.3 x 4.3 x 2.8	3.5	0.06	0.6
SK2-1V106M-RD		5846(N)	5.8 x 4.6 x 3.2	3.5	0.06	0.6
SK3-1V156M-RD0	15	7343(D)	7.3 x 4.3 x 2.8	5.25	0.06	1.0
SK3-1V156M-RD		5846(N)	5.8 x 4.6 x 3.2	5.25	0.06	1.0

SK, SK2, SK3,  
SK4, SK5, SK6, SKF

Tantalum