

# Laser DIODE

LD785-SE400



S/N: 785P400K31.B01

Center Wavelength: 785.0 nm

Fiber Type: NA

Test Date: 1/11/2019



Diode Package: TO 9 mm

Connector: NA

Tested By: Paya



QA: Pass

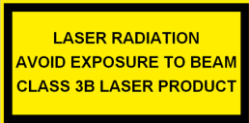
**Summary of Test Data ( CW, T<sub>case</sub>=25°C)**

Parameter	Symbol	Value	Unit
Fiber Output Power	P <sub>op</sub>	400.0	mW
Operating Current@P <sub>op</sub>	I <sub>op</sub>	492.0	mA
Operating Voltage@P <sub>op</sub>	V <sub>op</sub>	2.13	V
Threshold Current	I <sub>th</sub>	89.0	mA
Slope Efficiency	ΔP/ΔI	0.97	W/A

**Absolute Maximum Ratings**

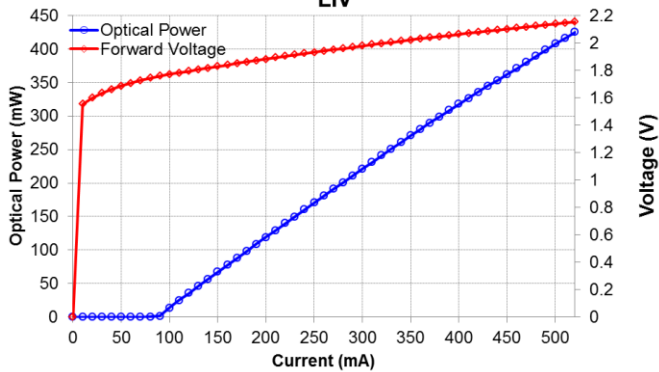
Parameter	Ratings	Unit
Laser Diode Current*	520	mA
Optical Output Power*	400	mW
LD Reverse Voltage*	2	V
Storage Temperature	-40 to 85	°C
Case Temperature	-10 to 50	°C

\* CW, T<sub>case</sub>=25°C

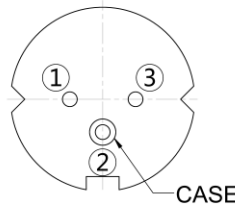


CAUTION- use of controls or adjustments or performance of procedures other than those specified herein may result in hazardous radiation exposure. There are no user serviceable parts in this product. When proper power is applied to this product, Laser radiation will be emitted from TO-window.

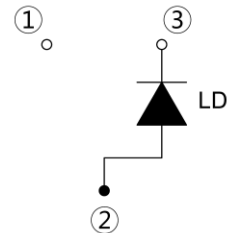
785P400K31.B01  
LIV



Diode Bottom View



Pin Code E



**Important Notes:**

1. The maximum ratings mean the limitation over which the laser should not be operated even instant time.
2. To protect the laser diode from damage due to static electricity (ESD), please follow proper ESD handling precautions.
3. To ensure safe operation use only with a suitable power source that complies with the pertinent requirements for laser systems as specified in IEC-60825-1 "Safety of Laser Products."



**USA, Canada, and South America**

Thorlabs, Inc.  
56 Sparta Avenue  
Newton, NJ 07860, USA

Tel: 973-579-7227  
Fax: 973-300-3600

**Europe**

Thorlabs GmbH  
85221 Dachau, Germany  
Tel: +49-(0)8131-5956-0

**Scandinavia**

Thorlabs Sweden AB  
400 20 Göteborg, Sweden  
Tel: +46-31-733-30-00

**UK and Ireland**

Thorlabs LTD.  
Cambridgeshire CB7 4EX, GB  
Tel: +44 (0)1353-654440

**Japan and Asia**

Thorlabs Japan Inc.  
Toshima-ku, Tokyo 170-0013, Japan  
Tel: +81-3-6915-7701

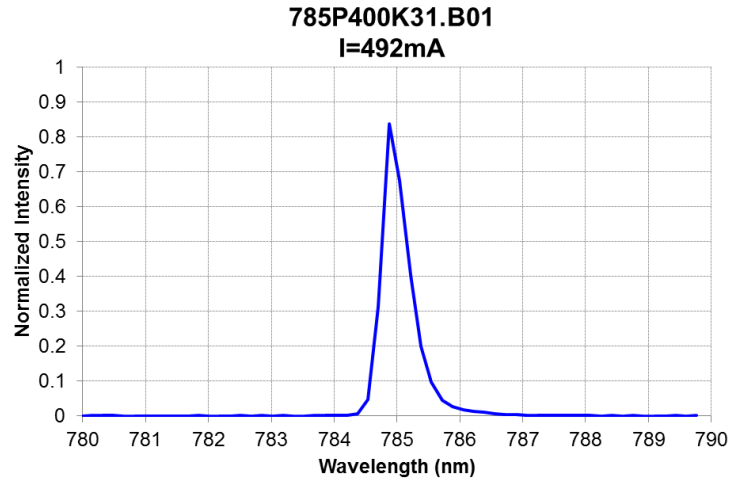
**France**

Thorlabs SAS  
78600 Maisons-Laffitte, France  
Tel: +33 (0) 970 444 844

**China**

Thorlabs China  
Shanghai, China  
Tel: +86 (0)21-32513486





$T_{\text{case}}=25^{\circ}\text{C}$ ,  $I_{\text{op}}=492\text{mA}$   
Spectrum measured by CCS175.