

PS 系列功率电感 PS Series SMD Power Inductors



特征 FEATURES

- 超薄
- 屏蔽结构
- 适合于表面贴装, 适合于回流焊
- Low profile
- Magnetic shielded
- SMT type, suitable for solder reflow

应用 APPLICATIONS

- 移动通信, 笔记本电脑
- DC/DC 转换
- Portable communication equipment, Notebook Computer
- DC/DC converters

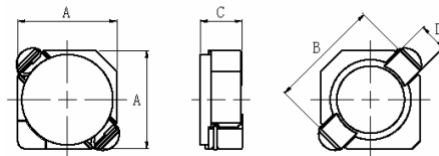
产品规格型号表示方法 ORDERING CODE

PS 5020 — 150 M T

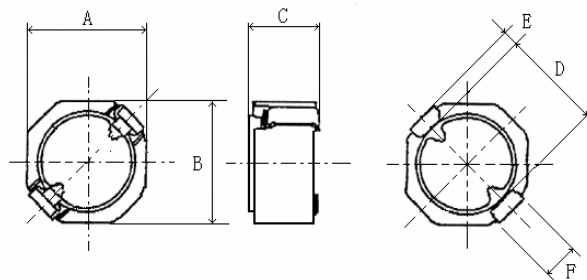
产品代号 Code		规格尺寸 Dimensions (L x W x T) (mm)		感量(μH) Inductance		误差 Tolerance		包装方式 Packaging Style	
PS	PS 系列 功率电感	5020	5.0×5.0×2.0	150	15	K	±10%	T	Tape&Reel
		5030	5.0×5.0×3.0	101	100	M	±20%	B	Bulk
		6020	6.0×6.0×2.0	102	1000				
		6030	6.0×6.0×3.0						

外形尺寸 Dimensions

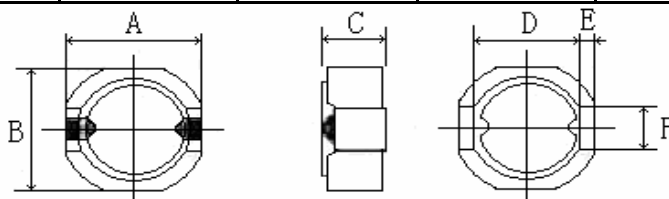
单位(Unit) : mm



型号 Part	A	B	C	D
3011	3.2MAX	3.3	1.2MAX	1.0
3014	3.2MAX	3.3	1.55MAX	1.0
4018	4.0MAX	4.4	1.8 ±0.3	1.1



型号 Part	A	B	C	D	E	F
5020	5.0 ±0.3	5.0 ±0.3	2.0 ±0.3	4.2 ±0.3	0.6 ±0.3	1.4 ±0.3
5030	5.0 ±0.3	5.0 ±0.3	3.0 ±0.3	4.2 ±0.3	0.6 ±0.3	1.4 ±0.3



型号 Part	A	B	C	D	E	F
6020	6.0 ±0.3	6.0 ±0.3	2.0 ±0.3	4.8 ±0.3	0.6 ±0.3	2.0 ±0.3
6030	6.0 ±0.3	6.0 ±0.3	3.0 ±0.3	4.8 ±0.3	0.6 ±0.3	2.0 ±0.3

电性能参数 Electrical Characteristics

PS3011 Series

Part Number	Inductance (μH)	Tolerance	Test Freq.	DCR (mΩ) Max	Isat (A)	Irms (A)
PS3011-1R5M	1.5	±20%	100kHz	68	0.90	1.48
PS3011-2R2M	2.2	±20%	100kHz	98	0.78	1.27
PS3011-3R3M	3.3	±20%	100kHz	123	0.60	1.02
PS3011-4R7M	4.7	±20%	100kHz	170	0.50	0.88
PS3011-6R8M	6.8	±20%	100kHz	260	0.44	0.80
PS3011-100M	10	±20%	100kHz	400	0.35	0.65

PS3014 Series

Part Number	Inductance (μH)	Tolerance	Test Freq.	DCR (mΩ) Max	Isat (A)	Irms (A)
PS3014-1R5M	1.5	±20%	100kHz	63	1.80	2.00
PS3014-1R8M	1.8	±20%	100kHz	75	1.65	1.80
PS3014-2R2M	2.2	±20%	100kHz	94	1.50	1.60
PS3014-2R7M	2.7	±20%	100kHz	106	1.35	1.40
PS3014-3R3M	3.3	±20%	100kHz	125	1.20	1.24
PS3014-3R9M	3.9	±20%	100kHz	138	1.10	1.12
PS3014-4R7M	4.7	±20%	100kHz	169	1.00	1.00
PS3014-5R6M	5.6	±20%	100kHz	188	0.95	0.98
PS3014-6R8M	6.8	±20%	100kHz	213	0.85	0.92
PS3014-8R2M	8.2	±20%	100kHz	281	0.80	0.80
PS3014-100M	10	±20%	100kHz	294	0.70	0.76
PS3014-120M	12	±20%	100kHz	394	0.62	0.64

PS4018 Series

Part Number	Inductance (μH)	Tolerance	Test Freq.	DCR (mΩ) Max	Isat (A)
PS4018-1R5M	1.5	±20%	100kHz	52	1.55
PS4018-2R2M	2.2	±20%	100kHz	72	1.20
PS4018-3R3M	3.3	±20%	100kHz	85	1.10
PS4018-4R7M	4.7	±20%	100kHz	105	0.90
PS4018-6R8M	6.8	±20%	100kHz	170	0.73
PS4018-100M	10	±20%	100kHz	210	0.55
PS4018-150M	15	±20%	100kHz	295	0.45
PS4018-220M	22	±20%	100kHz	430	0.40
PS4018-330M	33	±20%	100kHz	675	0.32

Isat: 加 Isat 时, 电感量下降 35% Inductance drop 35% typ.at rated Isat.

Irms: 加 Irms 时, 器件温度升高 40 Irms: T 40 rise typ. at Irms.

PS5020 Series

Part Number	Inductance (μH)	Tolerance	Test Freq.	DCR (mΩ) Max	Isat (A)	Irms (A)
PS5020-1R2M	1.2	±20%	100kHz	44	2.87	2.87
PS5020-2R2M	2.2	±20%	100kHz	59	2.17	2.05
PS5020-3R3M	3.3	±20%	100kHz	73	1.79	1.81
PS5020-4R7M	4.7	±20%	100kHz	87	1.52	1.53
PS5020-6R8M	6.8	±20%	100kHz	105	1.27	1.37
PS5020-100M	10	±20%	100kHz	150	1.02	1.09
PS5020-150M	15	±20%	100kHz	210	0.85	0.90
PS5020-220M	22	±20%	100kHz	275	0.74	0.82
PS5020-330M	33	±20%	100kHz	455	0.59	0.60
PS5020-470M	47	±20%	100kHz	730	0.49	0.44
PS5020-680M	68	±20%	100kHz	935	0.40	0.41
PS5020-101M	100	±20%	100kHz	1500	0.31	0.31

Isat: 加 Isat 时, 电感量下降 30% Inductance drop 30% typ.at rated Isat.

Irms: 加 Irms 时, 器件温度升高 40 Irms: T 40 rise typ. at Irms.

PS5030 Series

Part Number	Inductance (μH)	Tolerance	Test Freq.	DCR (mΩ) Max	Isat (A)	Irms (A)
PS5030-1R2M	1.2	±20%	100kHz	20	5.17	4.07
PS5030-2R2M	2.2	±20%	100kHz	36	3.90	3.30
PS5030-3R3M	3.3	±20%	100kHz	34	3.15	2.83
PS5030-4R7M	4.7	±20%	100kHz	45	2.49	2.51
PS5030-6R8M	6.8	±20%	100kHz	68	2.01	2.06
PS5030-100M	10	±20%	100kHz	90	1.77	1.76
PS5030-150M	15	±20%	100kHz	142	1.40	1.37
PS5030-220M	22	±20%	100kHz	208	1.15	1.01
PS5030-330M	33	±20%	100kHz	257	0.96	0.94
PS5030-470M	47	±20%	100kHz	352	0.83	0.80
PS5030-680M	68	±20%	100kHz	525	0.68	0.65
PS5030-101M	100	±20%	100kHz	801	0.58	0.55

Isat: 加 Isat 时, 电感量下降 30% Inductance drop 30% typ.at rated Isat.

Irms: 加 Irms 时, 器件温度升高 40 Irms: T 40 rise typ. at Irms.

PS6020 Series

Part Number	Inductance (μH)	Tolerance	Test Freq.	DCR (mΩ) Max	Isat (A)	Irms (A)
PS6020-1R0M	1.0	±20%	100kHz	16	3.84	3.50
PS6020-1R5M	1.5	±20%	100kHz	21	2.99	2.94
PS6020-2R2M	2.2	±20%	100kHz	28	2.33	2.47
PS6020-3R3M	3.3	±20%	100kHz	47	1.97	1.99
PS6020-4R7M	4.7	±20%	100kHz	65	1.54	1.59
PS6020-6R8M	6.8	±20%	100kHz	74	1.45	1.49
PS6020-100M	10	±20%	100kHz	118	1.09	1.22
PS6020-150M	15	±20%	100kHz	179	0.82	0.94
PS6020-180M	18	±20%	100kHz	207	0.90	0.83
PS6020-220M	22	±20%	100kHz	253	0.74	0.80
PS6020-330M	33	±20%	100kHz	455	0.60	0.59
PS6020-470M	47	±20%	100kHz	542	0.52	0.50

PS6030 Series

Part Number	Inductance (μH)	Tolerance	Test Freq.	DCR (mΩ) Max	Isat (A)	Irms (A)
PS6030-1R0M	1.0	±20%	100kHz	11	3.59	4.03
PS6030-1R5M	1.5	±20%	100kHz	13	2.93	3.63
PS6030-2R2M	2.2	±20%	100kHz	16	2.42	3.30
PS6030-3R3M	3.3	±20%	100kHz	21	1.89	2.83
PS6030-4R7M	4.7	±20%	100kHz	27	1.66	2.45
PS6030-6R8M	6.8	±20%	100kHz	32	1.45	2.20
PS6030-100M	10	±20%	100kHz	49	1.14	1.77
PS6030-120M	12	±20%	100kHz	52	1.04	1.70
PS6030-150M	15	±20%	100kHz	62	0.93	1.55
PS6030-180M	18	±20%	100kHz	74	0.85	1.41
PS6030-220M	22	±20%	100kHz	95	0.77	1.23
PS6030-270M	27	±20%	100kHz	120	0.70	1.08
PS6030-330M	33	±20%	100kHz	140	0.63	0.99
PS6030-390M	39	±20%	100kHz	150	0.58	0.95
PS6030-470M	47	±20%	100kHz	185	0.53	0.84
PS6030-560M	56	±20%	100kHz	220	0.48	0.76
PS6030-680M	68	±20%	100kHz	270	0.44	0.69
PS6030-820M	82	±20%	100kHz	330	0.40	0.61
PS6030-101M	100	±20%	100kHz	415	0.36	0.54
PS6030-151M	150	±20%	100kHz	615	0.31	0.42

Isat: 加 Isat 时, 电感量下降 30% Inductance drop 30% typ.at rated Isat.

Irms: 加 Irms 时, 器件温度升高 40 Irms: T 40 rise typ. at Irms.