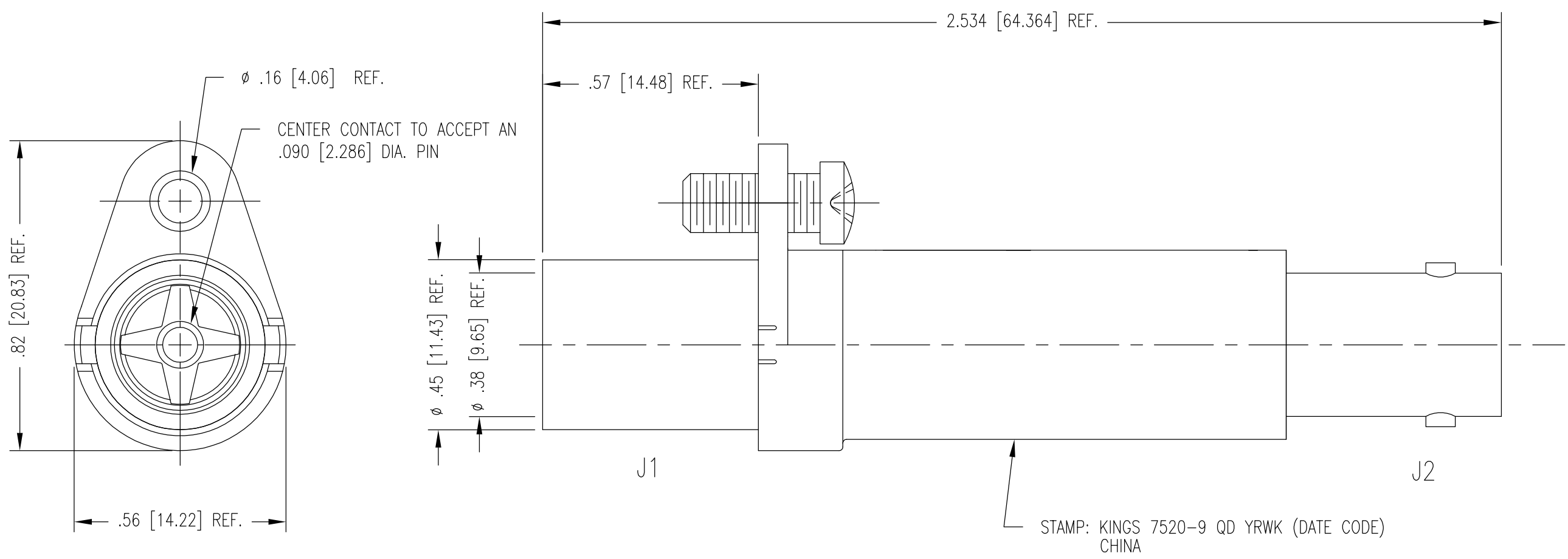


DASH NO.	M CODE	MADE FROM
----------	--------	-----------

REVISIONS	
ISSUE	CHANGES
4	CN 39652 E DRK 10/04/06
F	ER21631 PSM 02/02/10



SD7520-9 QD

NOTES:

- BNC INTERFACE PER KINGS ES-17, FIG. 5.
- .090 [2.286] PATCH JACK CENTER CONTACT.
- SCREW TO BE SUPPLIED UNASSEMBLED.
- MATERIALS:
 SCREW: STAINLESS STEEL
 INSULATOR: ZYTEL ST-801, COLOR: BLACK
 SPRINGS } BER. COP., ASTM-B-196
 CENTER CONTACTS }
 ALL OTHER METAL PARTS: BRASS, ASTM-B16
- FINISHES:
 SCREW: PASSIVATED PER, QQ-P-35
 CENTER CONTACTS } HARD GOLD PLT. PER MIL-G-45204
 SPRINGS }
 ALL OTHER METAL PARTS: KINGS TARNISH RESISTANT NICKEL FINISH (TR-5)
- ELECTRICAL CHARACTERISTICS:
 NOMINAL IMPEDANCE: 75 OHMS
 FREQUENCY RANGE: DC TO 3.5 GHz
 RETURN LOSS: -15dB UP TO 1.5 GHz, -10dB UP TO 3.5 GHz
- COMPLIANT TO SMPTE 424M (3G-SDI) SPECIFICATION.
- DIMENSIONS IN INCHES [MM].
- CHANGES TO THIS DRAWING AFFECT 7520-9 AND 7520-9 QD.



SCALE 3:1	
APPROX SURFACE AREA	
USED ON	
REF:	
ADAPTER,F-F,PATCH JACK-75 BNC	
DRAWN DRK	DATE 10/04/06
DESIGN FD	DATE 11/07/95
APPR. FD	DATE 11/13/95
KINGS by WINCHESTER ELECTRONICS	Winchester Electronics 62 Barnes Industrial Road North Wallingford, CT 06492
B	SIZE

SD7520-9 QD