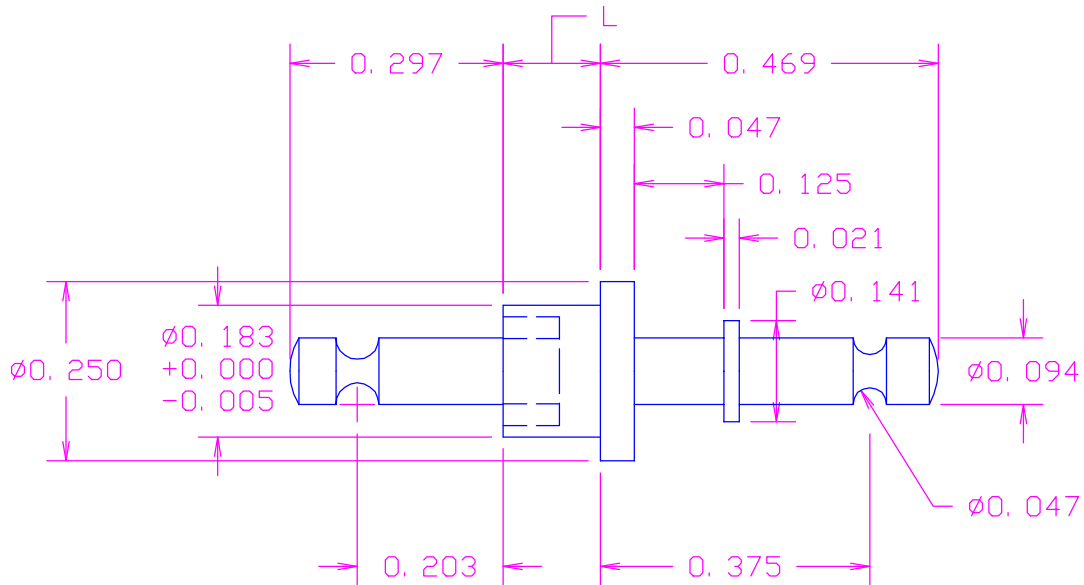


DATE	SYM	REVISION RECORD	AUTH.	DR.	CK.
8/16/00	-	ISSUED		NT	DG



RECOMMENDED MOUNTING HOLE .185 DIA.(13 DRILL)

MATERIAL: BRASS PER ASTM B16,

ALLOY 36000, 1/2 HARD

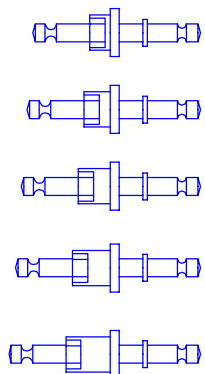
FINISH: .0003"MIN. SILVER PER QQ-S-365,

TYPE II, WITH NON-CHROMATE

PRESERVATIVE

PART NUMBER:	L:
12-515-2-01	.105
12-515-3-01	.135
12-515-4-01	.165
12-515-5-01	.195
12-515-6-01	.230

ACTUAL SIZE



TOLERANCES (EXCEPT AS NOTED)	CONCORD		ELECTRONICS CORPORATION
DECIMAL ± .005	P/N	SCALE	30 GREAT JONES ST. NEW YORK N. Y. 10012
FRACTIONAL ± 1/64	TITLE TERMINAL		
ANGULAR ± 5°	DATE 8/16/00	DRAWING NUMBER 12-515-X-01	