

### CCFL driving inverter transformers CCFL 驱动逆变变压器

\* Dimensions is a Typ. value including a terminal  
尺寸是包括端子在内的平均值



(12.4×11.3×3.1mm) Typ.  
**J120**



(11.4×10.0×2.8mm) Typ.  
**BLC10S**



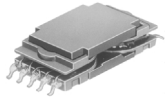
(11.4×10.0×3.2mm) Typ.  
**BLC10L**



(18.0×15.0×3.1 mm) Typ.  
**BLC15L**



(34.3×8.5×4.6mm) Typ.  
**BLC103B**



(24.9×10.0×5.0mm) Typ.  
**BLC210**



(24.9×10.0×5.4mm) Typ.  
**BLC210HP**



(31.6×15.0×6.4/5.7mm) Typ.  
**BLC4115**  
**BLC4115L**



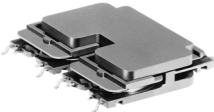
(33.6×30.6×7.8mm) Typ.  
**BLC4206H**  
**BLC4206HB**



(29.4×12.5×6.5mm) Typ.  
**BLC4119**



(26.4×22.0×5.3mm) Typ.  
**BLC4204**  
**BLC4204B**



(33.6×30.6×6.5mm) Typ.  
**BLC4206**  
**BLC4206B**



(37.7×20.0×6.7mm) Typ.  
**BLC4110**



(44.9×37×10mm) Typ.  
**BLC4220**  
**BLC4220B**



(39.5×37×10mm) Typ.  
**BLCP4220**  
**BLCP4220B**



(34.9×15.8×9.7mm) Typ.  
**CLT4123**



(32.2×15.8×9.5mm) Typ.  
**CLTP4123**

#### Features

- The BLC series is an inverter transformer for LCD back-lighting purposes. TOKO's unique multi-layered winding process is utilized with maximum magnetic effect for highest efficiency.
- The BLC series is suitable for note type P.C., camcorder and LCD-TV.

#### 特征

- BLC 系列是应用于 LCD 背光的逆变变压器。东光独特的多层绕线工艺实现最高的效率。
- BLC 系列适用于笔记本电脑，数码录像机和液晶电视。

Type	Input voltage range (V)	Output open voltage (Vrms) Max.	Osc. frequency (kHz)	Power consumption of CCFL (W) Max.
J120	3~9	800	50~150	1.5
BLC10S	3~9	800	50~150	1.2
BLC10L	3~9	850	50~150	1.5
BLC15L	3~9	850	50~150	2.5
BLC103B*	5~12	1500	50~150	3.5
BLC210	5~15	1200 (2120Vo-p 2sec.)	40~100	3.0
BLC210HP	5~15	1200 (2120Vo-p 2sec.)	40~100	3.5
BLC4115	5~35	1500 (2550Vo-p 2sec.)	40~100	6.5
BLC4115L	5~35	1500 (2550Vo-p 2sec.)	40~100	5.5
BLC4206H	5~27	1500	40~100	7.5
BLC4206HB	5~27	2000	40~100	14.0
BLC4119	5~35	1500	40~100	5.5
BLC4110	5~27	1500 (2550Vo-p 2sec.)	40~100	10.0
BLC4204	5~27	1500/ch (2550Vo-p 2sec./ch)	40~100	3.5×2ch
BLC4204B	5~27	*2000 (1000/ch) (1750Vo-p 2sec./ch)	40~100	7.0
BLC4206	5~27	1500/ch (2550Vo-p 2sec./ch)	40~100	6.5×2ch
BLC4206B	5~27	*2000 (1000/ch) (1750Vo-p 2sec./ch)	40~100	13.0
BLC4220	12~120	1650/ch (2825Vo-p 2sec./ch)	30~100	10×2ch
BLC4220B	12~120	*1500/ch (2545Vo-p 2sec./ch)	30~100	10×2ch
BLCP4220	12~120	1650/ch (2825Vo-p 2sec./ch)	30~100	10×2ch
BLCP4220B	12~120	*1500/ch (2545Vo-p 2sec./ch)	30~100	10×2ch
CTL4123	5~36	2000(3200Vo-p 3sec.)	30~100	8.0
CLTP4123P	5~36	2000(3200Vo-p 3sec.)	30~100	8.0

\* A lamp should be used floating. 灯管使用浮动连接

\* Reflow not supported (Manual soldering recommended)  
不支持回流焊 (建议手工焊接)

※ As to inverter products, individual catalog is available as your request.  
对于逆变器产品，根据您的需要可以提供专门的目录