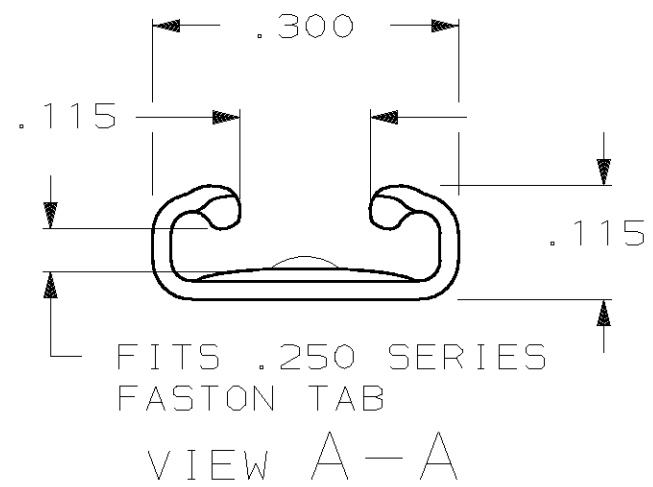
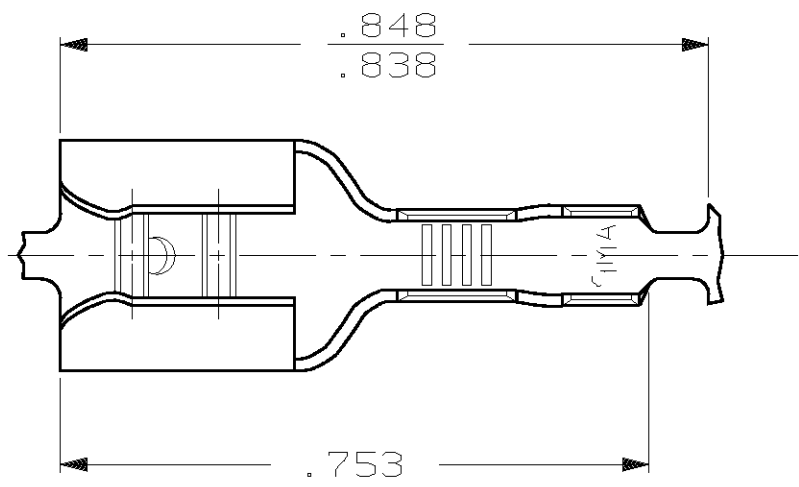


THIS DRAWING IS UNPUBLISHED. RELEASED FOR PUBLICATION ,19 .  
 © COPYRIGHT 19 BY AMP INCORPORATED, HARRISBURG, PA. ALL INTERNATIONAL RIGHTS RESERVED. AMP PRODUCTS MAY BE COVERED BY U.S. AND FOREIGN PATENTS AND/OR PATENTS PENDING.

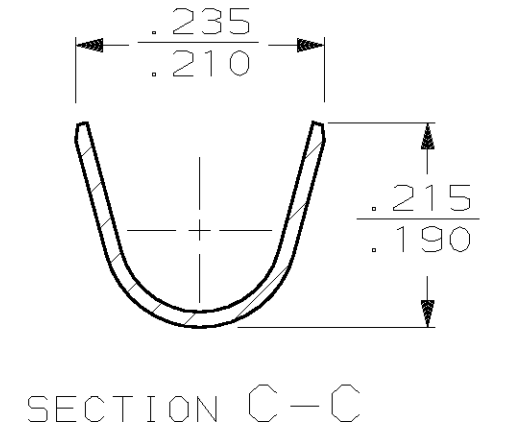
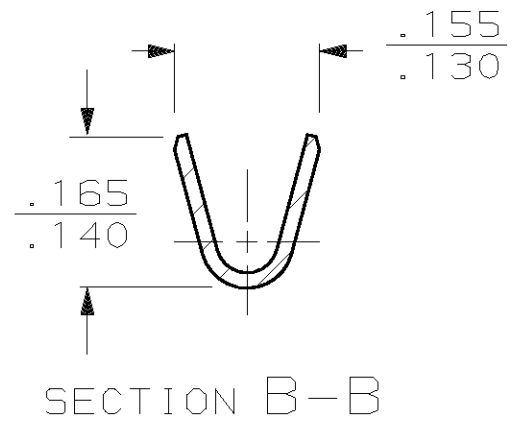
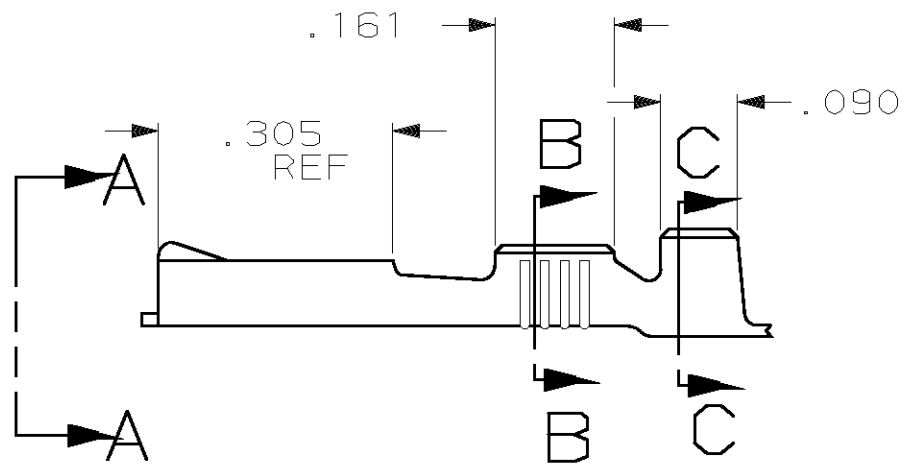
LOC AF DIST 50 P F

REVISIONS				
ZONE	LTR	DESCRIPTION	DATE	APPROVED
	T	ADDED -6 PER OG3A-0370-01	22 JUN 01	JR/PD



FITS .250 SERIES FASTON TAB  
 VIEW A-A

- 1 CONTINUOUS STRIP ON REELS.
- 2 MATING TAB THK IS .032±.001
- 3 WIRE SIZE IS #18-#14 AWG.
- 4 INSULATION RANGE IS .120-.170 DIA.
- 5 PRELIMINARY - NOT FOR PRODUCTION
- 6 REDUCED PACKAGE QUANTITY



TIN	.016±.001 BRASS	6	542660-6
NICKEL	.016±.001 STEEL	5	42660-5
<del>PRE TIN</del>	<del>.016±.001 BRASS</del>		<del>42660-4</del>
TIN	.016±.001 BRASS		42660-2
	.016±.001 BRASS		42660-1

FINISH	MATERIAL	PART NO
UNLESS OTHERWISE SPECIFIED DIMENSIONS ARE IN INCHES TOLERANCES ON: 2 PL DEC ± - 3 PL DEC ± .015 ANGLES ± -	DR 4/17/86 JR RUTH CHK 4/17/86 G YETTER APPD 4/17/86 C MEYERS APPD 4/17/86 R KUZO	AMP INCORPORATED Harrisburg, Pa. 17105
MATERIAL SEE ABOVE	PRODUCT SPEC	
FINISH SEE ABOVE	APPLICATION SPEC	NAME RECEPTACLE FASTON,™ .250 SERIES
	WEIGHT	SIZE <b>B</b>
		FSCM NO 00779
		DRAWING NO 42660
		SCALE NTS
		SHEET 1 OF 1