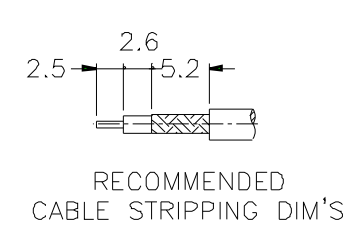
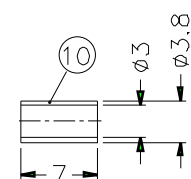
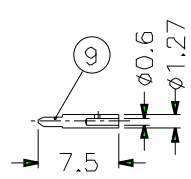
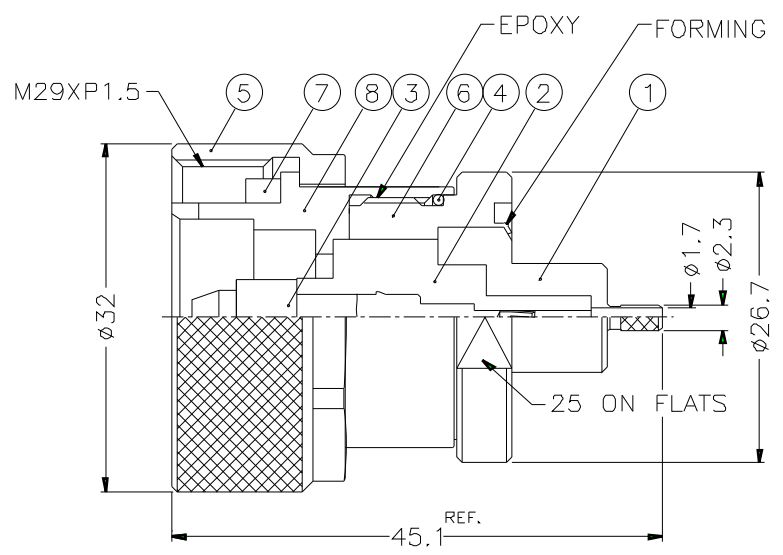


1		2		3		4		5		6		7		8	
REVISIONS															
ISS	ZONE	DESCRIPTION\PER REQUEST\DATE													



10	FERRULE	COPPER	NOTE 2	1	FR-38/3X7C
9	CONTACT PIN	NOTE 1	NOTE 4	1	SMA5081-6-127 /06
8	CONTACT BODY	NOTE 1	NOTE 2	1	7161181A1-7
7	GASKET	SILICONE	RED	1	GS-25/205X35
6	BODY	NOTE 1	NOTE 2	1	7161111A1-6
5	SHELL	NOTE 1	NOTE 2	1	7161141A1-7
4	GASKET	SILICONE	RED	1	GS-228/20XD14
3	CONTACT PIN	NOTE 3	NOTE 4	1	7161181A1-3-.141
2	INSULATOR	NOTE 5	NATURAL	1	7166581A1-2T-.085
1	BARREL	NOTE 1	NOTE 2	1	7161111A1-1-23/17
NO.	DESCRIPTION	MATERIAL	FINISH	Q'TY	DRAWING NO.

NOTES: FINISH (PLATING THICKNESS IN MICRO-INCHES)

- BRASS PER QQ-B-626
- SILVER PL. 120 MIN. THICK OVER COPPER STRIKE
- BERYLLIUM COPPER PER QQ-C-530
- SILVER PL. 200 MIN. THICK OVER COPPER STRIKE
- TEFLON MIL-P-19468

DIMENSIONS ARE IN MILLIMETERS

UNLESS OTHERWISE SPECIFIED TOLERANCES

0.5-6	= ±0.2
6-30	= ±0.4
30-120	= ±0.6
120-315	= ±1
315-1000	= ±1.6
1000-2000	= ±2.4

PART NO.	7161111A1-120STS-5-50
APPROVED	DATE 10-11-01'
CHECKED	DATE 10-11-01'
DRAWN	DATE 10-11-01'
SCALE	1.5/1
ISSUE	A
FILE NO.	

1. CRIMPED FERRULE
HEX CRIMP SIZE .128"

2. CRIMPED CONTACT PIN
HEX CRIMP SIZE .068"

Amphenol

TITLE
7/16 CRIMP PLUG

DRAWING NO.
KJ-7161111A1-120STS-316U-50

ITEM NO.

1		2		3		4		5		6		7		8	
---	--	---	--	---	--	---	--	---	--	---	--	---	--	---	--