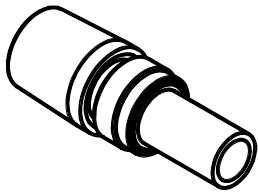
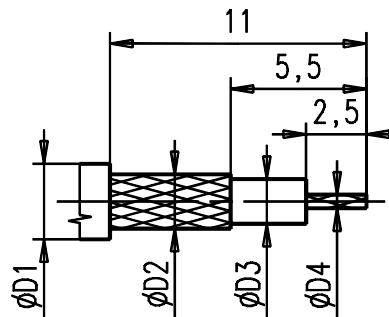


Steckbereich nach IEC 169-10  
Mating area acc.to IEC 169-10

M2:1



Kabelzuschnitt  
Stripping dimension



Fuer Kabel /  
For cable

Gr.	Type Typ	$\phi D1$ max.	$\phi D2$ max.	$\phi D3$ max.	$\phi D4$ max.	$\phi D5$	$\phi D6$	$\phi D7$	$\phi D8$	Crimp Aussen/out	Crimp Innen/in
1											
2	RG 179 BU	2,70	2,24	1,50	0,3	1,70	2,30	3,00	4,00	3,25	0,70
3											

**IMS** CONNECTOR SYSTEMS

general tolerance  
ISO 2768  
mH

scale:

Assembly instruction:  
Stripping dimension:

date name  
06.03.02 Sarfert  
checked  
Norm  
31843

Kabelbuchse

Cable mount jack



1097.11.2310.02'

Rev.  
a

187/02 a Neue Zeichnung 15.03.02 I.S.  
nr. rev. alteration date name