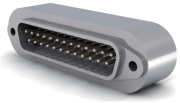


# D-Sub Feedthrough, Weld Adapter, Male, Stainless Steel

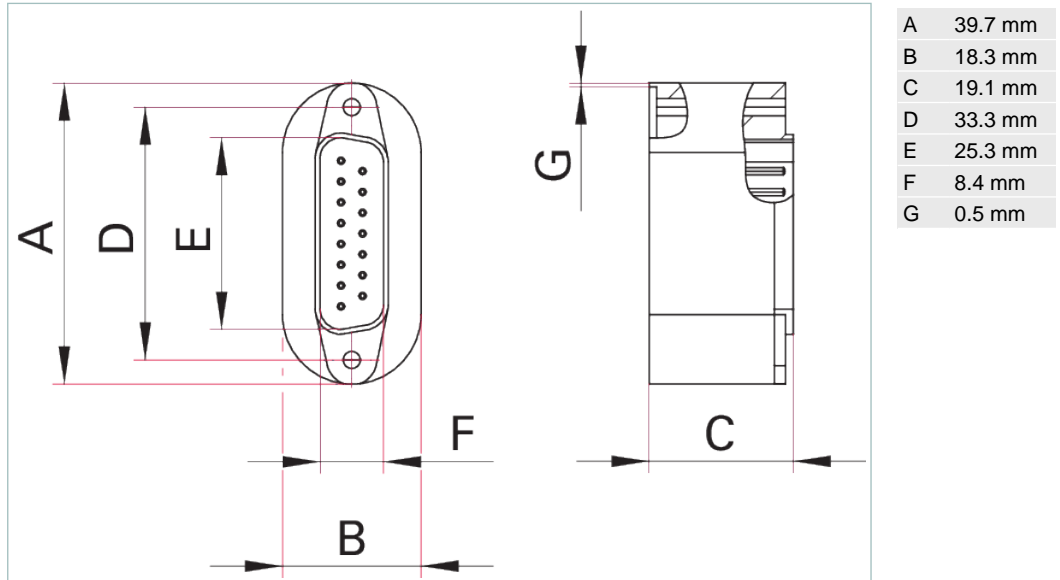
## D-Sub Feedthrough, Weld Adapter, Male, Stainless Steel



- Weldable with a welding lip

Similar Image

### Dimensions



Technical Data	D-Sub Feedthrough, Weld Adapter, Male, Stainless Steel
Current	5 A per pin
Heat up and cool down speed	max. 25 K/min
Material	Stainless steel; pins: stainless steel (gold-plated)
Pin diameter	1 mm   0.04 inch
Pins	15
Pressure range	$1 \cdot 10^{-11}$ hPa to ambient pressure
Temperature range (vacuum side)	100-300 °C   212-572 °F   373-573 K
Tightness	$1 \cdot 10^{-11}$ Pa m <sup>3</sup> /s   $7.5 \cdot 10^{-11}$ Torr l/s   $1 \cdot 10^{-10}$ mbar l/s
Voltage	500 V DC
Order number	
D-Sub Feedthrough	<b>XSD-15</b>

## **VACUUM SOLUTIONS FROM A SINGLE SOURCE**

Pfeiffer Vacuum stands for innovative and custom vacuum solutions worldwide, technological perfection, competent advice and reliable service.

## **COMPLETE RANGE OF PRODUCTS**

From a single component to complex systems:

We are the only supplier of vacuum technology that provides a complete product portfolio.

## **COMPETENCE IN THEORY AND PRACTICE**

Benefit from our know-how and our portfolio of training opportunities!

We support you with your plant layout and provide first-class on-site service worldwide.

Are you looking for a  
perfect vacuum solution?  
Please contact us:

**Pfeiffer Vacuum GmbH**  
Headquarters · Germany  
T +49 6441 802-0  
info@pfeiffer-vacuum.de

[www.pfeiffer-vacuum.com](http://www.pfeiffer-vacuum.com)

All data subject to change without prior notice.

**PFEIFFER**  **VACUUM**