

DUAL POLARISED TRI-SECTOR ANTENNA GSM900/1800 XP/3-85/16 TYPE 1663

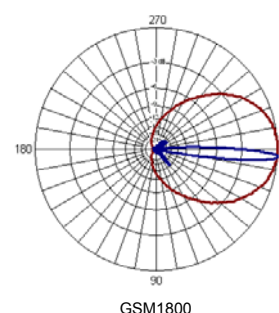
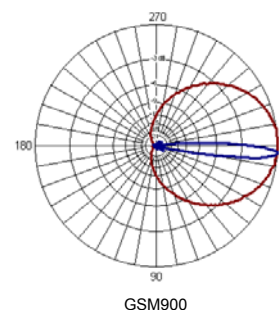
- ❑ INBUILT DIPLEXER
- ❑ SIDELOBE SUPPRESSION

These dual-band models are intended to reduce the antenna hardware required to operate GSM900 and GSM1800 at the same sites. The units feature inbuilt diplexers to simplify connection to feeder cables.

A number of models provide gain & fixed electrical downtilt to exactly suit the location. Superior circuit design coupled with advanced manufacturing techniques guarantee consistent product quality, with excellent intermodulation performance.

TECHNICAL SPECIFICATION

| Frequency | 870-960Mhz | 1710-1880Mhz |
|----------------------------|-----------------------|-----------------|
| Gain | 16dBi | 15.8dBi |
| VSWR | 1.5:1 max | 1.5:1 max |
| Horizontal Beamwidth | 3 X 85° | 3 X 85° |
| Vertical Beamwidth | 8.6° | 6.6° |
| Polarisation | +45° and -45° | +45° and -45° |
| Fixed Electrical Downtilt | 4° | 4° |
| Upper Sidelobe Suppression | >-17dB | >-13dB |
| Front-To-Back Ratio | >25dB | >25dB |
| Isolation Between Ports | >23dB | >23dB |
| Isolation Between Bands | >22dB | >22dB |
| Power Rating | 300W | 200W |
| Connectors (bottom) | 7/16 DIN female | 7/16 DIN female |
| Impedance | 50Ω | - |
| Dimensions (LxWxD) | 2330 x 253 x 180 mm | - |
| Wind Loading | 900N @ 45m/s | - |
| Operational Wind Speed | 45m/s | - |
| Survival Wind Speed | 56m/s | - |
| Lightning Protection | DC grounded | - |
| Weight | 26kg | - |
| Temperature | -55° to +70°C | - |
| Bracket Size | To suit pole 48-115mm | - |
| Bracket Downtilt | 0°-10° in 2° steps | - |



THALES ANTENNAS LTD

First Avenue, Millbrook Trading Estate, Southampton SO15 0LJ United Kingdom

Tel: +44 (0) 2380 705705, Fax: +44 (0) 2380 701122, email: sales@racal-antennas.co.uk, www.thalesantennas.com

Thales reserve the right to vary in detail from the description and specification in this publication. Issue: 6/01/1