

**DESIGNED AND DIMENSIONED IN MILLIMETERS[INCHES]  
ALL DIMENSIONS REFERENCE**

**UMPS-XX-XX.X-X-VT-XX-XX-X**

DO NOT  
SCALE FROM  
THIS PRINT

NO. OF POSITIONS

- 02, -03, -04, -05
- \*-06, \*-07, \*-08,
- \*-09, \*-10

LEAD STYLE

- 03.5: 3.5 mm
- 05.5: 5.5 mm
- \*\* -07.5: 7.5 mm

PLATING

- T: MATTE TIN
- G: 10μ" SELECTIVE GOLD IN CONTACT AREA, 3μ" GOLD ON TAIL
- \*-L: 10μ" SELECTIVE GOLD IN CONTACT AREA, MATTE TIN ON TAIL (NOT AVAILABLE WITH -03.5 LEAD STYLE)
- \*-S: 30μ" SELECTIVE GOLD IN CONTACT AREA, MATTE TIN ON TAIL (NOT AVAILABLE WITH -03.5 LEAD STYLE)

PICK AND PLACE PAD

- (LEAVE BLANK FOR NO PAD)
- K: POLYIMIDE PAD

OPTIONS

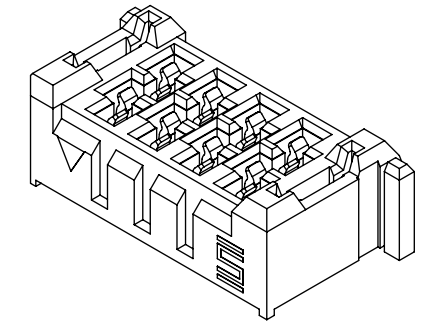
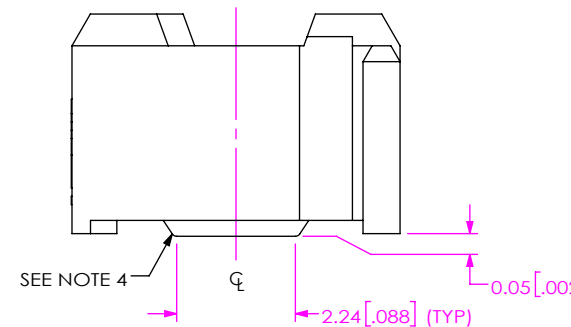
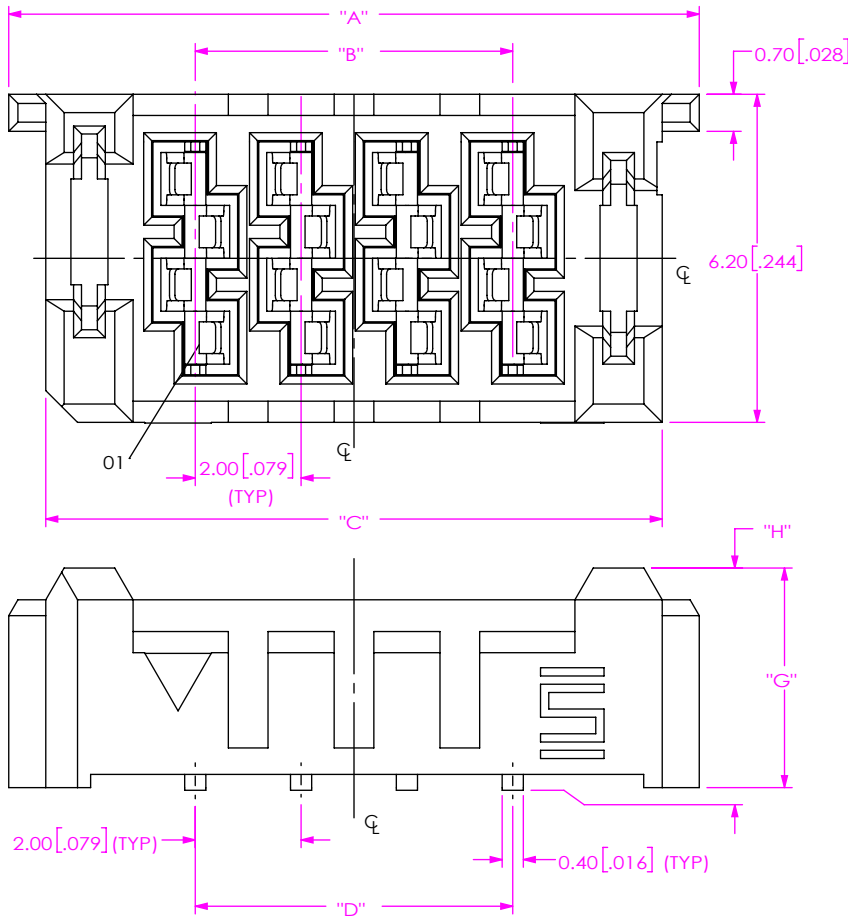
- (LEAVE BLANK FOR NO WELD TAB)
- WT: WELD TAB THROUGH HOLE
- \*\* -WS: WELD TAB SURFACE MOUNT (ONLY TOOLED ON -03.5 LEAD STYLE)

TAIL

- SM: SURFACE MOUNT
- \*-T1: THROUGH HOLE FOR 1.57 [.062]PCB
- \*-T2: THROUGH HOLE FOR 2.36 [.093]PCB

ORIENTATION

- VT: VERTICAL
- \* = NOT TOOLED
- \*\* = NOT RELEASED



**FIG 1**

UMPS-04-03.5-X-VT-SM SHOWN

UMPT LEAD STYLE	UMPS LEAD STYLE		
	-03.5	-05.5	-07.5
-01.5	5.00 [0.197]	7.00 [0.276]	9.00 [0.354]
-06.5	10.00 [0.394]	12.00 [0.472]	14.00 [0.551]

LEAD STYLE	"G"	"H"	"J"
-03.5	4.15 [0.163]	4.20 [0.165]	3.68 [0.145]
-05.5	6.15 [0.242]	6.20 [0.244]	5.68 [0.224]
-07.5	8.15 [0.321]	8.20 [0.323]	7.68 [0.302]

No OF POSITION	"A"	"B"	"C"	"D"	"E"
-02	9.05 [.356]	2.00 [.079]	7.65 [.301]	2.00 [.079]	6.00 [.236]
-03	11.05 [.435]	4.00 [.157]	9.65 [.380]	4.00 [.157]	8.00 [.315]
-04	13.05 [.514]	6.00 [.236]	11.65 [.459]	6.00 [.236]	10.00 [.394]
-05	15.05 [.593]	8.00 [.315]	13.65 [.537]	8.00 [.315]	12.00 [.472]

- NOTES:
- NOTE DELETED.
  - PARTS TO BE PACKAGED IN TAPE & REEL.
  - FOR QUANTITIES UP TO 49 PCS., NO LEADER, TRAILER OR REEL WILL BE SUPPLIED. FOR QUANTITIES OF 50-124 PCS., NO LEADER OR TRAILER WILL BE SUPPLIED, SPLICES MAY BE PRESENT.
  - HOLES IN THE SURFACE MOUNT TAILS MAY OR MAY NOT BE PRESENT, AT SAMTEC DISCRETION.

**PROPRIETARY NOTE**  
THIS DOCUMENT CONTAINS CONFIDENTIAL AND PROPRIETARY INFORMATION AND ALL DESIGN, MANUFACTURING, REPRODUCTION, USE, PATENT RIGHTS AND SALES RIGHTS ARE EXPRESSLY RESERVED BY SAMTEC, INC. THIS DOCUMENT SHALL NOT BE DISCLOSED, IN WHOLE OR PART, TO ANY UNAUTHORIZED PERSON OR ENTITY NOR REPRODUCED, TRANSFERRED OR INCORPORATED IN ANY OTHER PROJECT IN ANY MANNER WITHOUT THE EXPRESS WRITTEN CONSENT OF SAMTEC, INC.

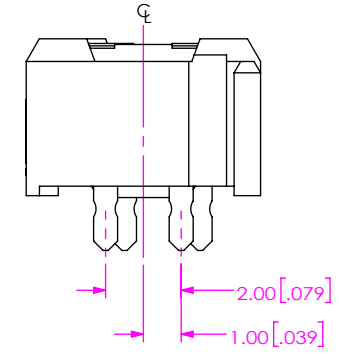
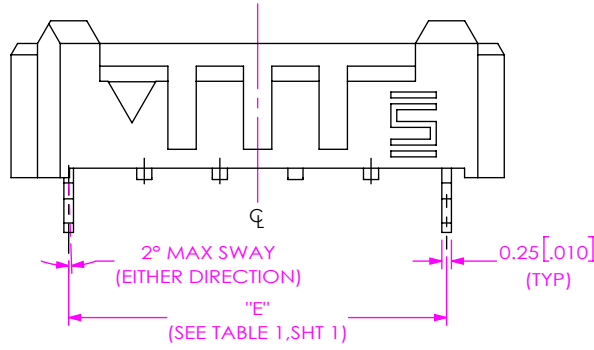
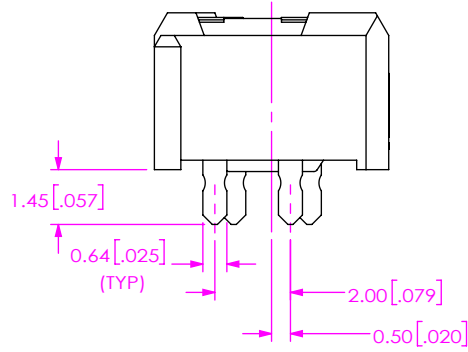
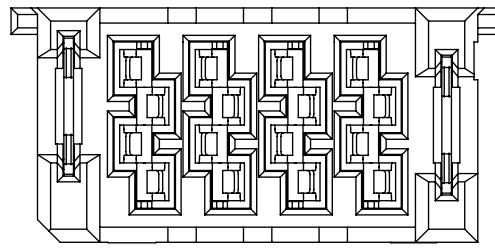


520 PARK EAST BLVD, NEW ALBANY, IN 47150  
PHONE: 812-944-6733 FAX: 812-948-5047  
e-Mail info@SAMTEC.com code 55322

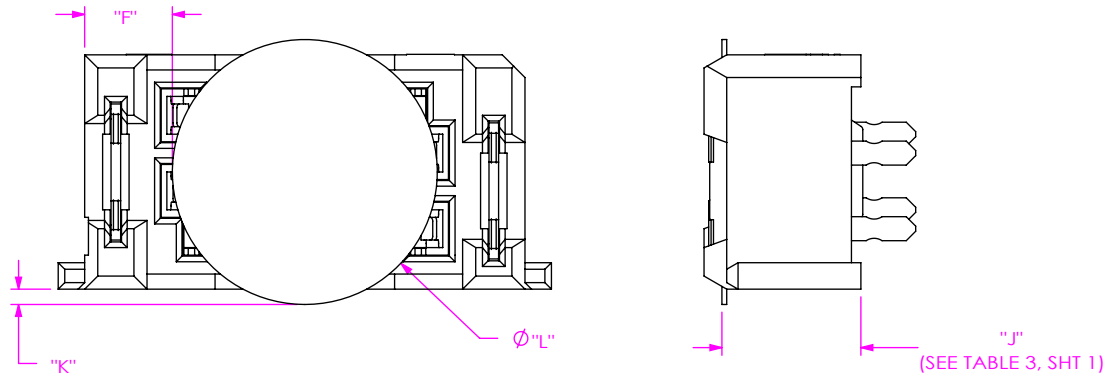
DO NOT SCALE DRAWING  
SHEET SCALE: 2:1  
MATERIAL:  
INSULATOR: LCP  
CONTACT: COPPER ALLOY  
WELD TAB: COPPER ALLOY

DESCRIPTION:  
ULTRA MICRO POWER SOCKET

DWG. NO.  
**UMPS-XX-XX.X-X-VT-XX-XX-X**



**FIG 2**  
UMPS-04-03.5-X-VT-SM-WT SHOWN  
(DIFFERENT AS SHOWN, OTHERWISE SAME AS FIG 1)



**FIG 3**  
UMPS-04-03.5-X-VT-SM-WT-K SHOWN  
(DIFFERENT AS SHOWN, OTHERWISE SAME AS FIG 2)

No OF POSITION	"F"	"K"	"L"
-02	1.58 [.062]	0.85 [.034]	4.50 [.177]
-03	1.57 [.062]	0.15 [.006]	6.50 [.256]
-04	2.32 [.091]	0.41 [.016]	7.01 [.276]
-05	3.32 [.131]	0.41 [.016]	7.01 [.276]

**PROPRIETARY NOTE**  
THIS DOCUMENT CONTAINS CONFIDENTIAL AND PROPRIETARY INFORMATION AND ALL DESIGN, MANUFACTURING, REPRODUCTION, USE, PATENT RIGHTS AND SALES RIGHTS ARE EXPRESSLY RESERVED BY SAMTEC, INC. THIS DOCUMENT SHALL NOT BE DISCLOSED, IN WHOLE OR PART, TO ANY UNAUTHORIZED PERSON OR ENTITY NOR REPRODUCED, TRANSFERRED OR INCORPORATED IN ANY OTHER PROJECT IN ANY MANNER WITHOUT THE EXPRESS WRITTEN CONSENT OF SAMTEC, INC.



520 PARK EAST BLVD, NEW ALBANY, IN 47150  
PHONE: 812-944-6733 FAX: 812-948-5047  
e-Mail: info@SAMTEC.com code 55322

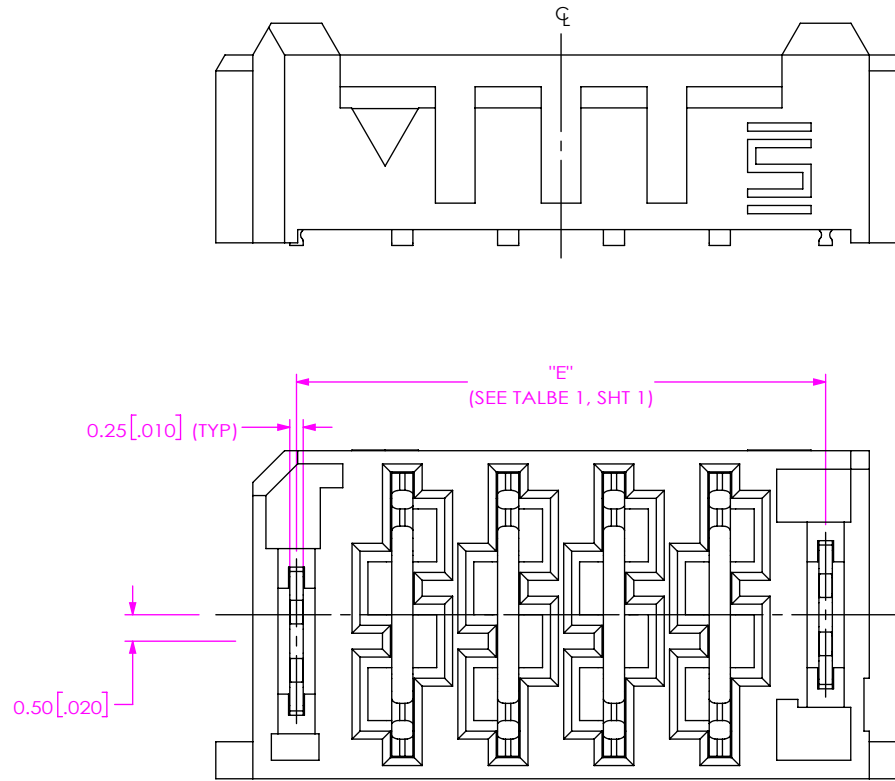
DO NOT SCALE DRAWING

SHEET SCALE: 2:1

DESCRIPTION:  
ULTRA MICRO POWER SOCKET

DWG. NO.  
UMPS-XX-XX.X-X-VT-XX-XX-X

BY: JOE Z 03/22/2017 SHEET 2 OF 3



**FIG 4**  
 UMPS-04-03.5-X-VT-SM-WS SHOWN  
 (DIFFERENT AS SHOWN, OTHERWISE SAME AS FIG 2)

**PROPRIETARY NOTE**  
 THIS DOCUMENT CONTAINS CONFIDENTIAL AND PROPRIETARY INFORMATION AND ALL DESIGN, MANUFACTURING, REPRODUCTION, USE, PATENT RIGHTS AND SALES RIGHTS ARE EXPRESSLY RESERVED BY SAMTEC, INC. THIS DOCUMENT SHALL NOT BE DISCLOSED, IN WHOLE OR PART, TO ANY UNAUTHORIZED PERSON OR ENTITY NOR REPRODUCED, TRANSFERRED OR INCORPORATED IN ANY OTHER PROJECT IN ANY MANNER WITHOUT THE EXPRESS WRITTEN CONSENT OF SAMTEC, INC.



520 PARK EAST BLVD, NEW ALBANY, IN 47150  
 PHONE: 812-944-6733 FAX: 812-948-5047  
 e-Mail info@SAMTEC.com code 55322

DO NOT SCALE DRAWING  
 SHEET SCALE: 2:1

DESCRIPTION:  
 ULTRA MICRO POWER SOCKET

DWG. NO.  
 UMPS-XX-XX.X-X-VT-XX-XX-X

BY: JOE Z 03/22/2017 SHEET 3 OF 3