

ADAM TECH

ADAM TECHNOLOGIES INC.

INTRODUCTION:

Adam Tech Crimp and Poke D-Subs are a time and labor saving alternative to solder type D-Subs for cable assemblies and harnesses. Individual contacts are easily crimped onto discrete wires and mounted into the connector body. The housing can be fully or selectively loaded as necessary to further cost savings. After wiring, the assembly is compatible with assembled backshells or plastic overmolding. Our design conforms to applicable requirements of MIL-C-24308 D, ISO 2110, EIA Standards RS232, RS442, RS449 and IEC 48-B-106 standards. Our low profile metal shell provides long term cycle life and EMI/ESD reductions which meet FCC Part 15, Subpart J emission limits.

FEATURES:

- Available in 9, 15, 25, 37 and 50 positions
- Fast, labor saving, low cost
- Wide wire range compatibility 30 - 20 AWG
- Designed for backshells or overmolding
- Contacts available in reeled or loose piece form

MATING OPTIONS:

Mates with Adam Tech and all industry standard D-Subminiature connectors

SPECIFICATIONS:

Material:

Shell: Steel, tin-plated or yellow chromate over zinc optional
Insulator: Polybutylene Terephthalate (PBT), glass reinforced thermoplastic, rated UL 94V-0

Insulator color: Black

Contacts: Phosphor Bronze

Plating:

5 μ m gold nom. (optional 30 μ m) to MIL-G-45204, Type II, Grade C on contact area over 50 μ m nickel underplate to QQ-N-290, Class 2, Grade C, gold flash on crimp area

Electrical:

Operation voltage: 250 VAC max

Current rating: 5 Amps max

Contact resistance: 20 m Ω max

Insulation resistance: 5000 M Ω min @ 1000 VDC between adjacent contacts (75° F and 55% R.H.)

Dielectric withstanding voltage: 1000 VAC rms (sea level)

Capacitance: 2 pF max between adjacent contacts

Mechanical:

Insertion force: 10 ozs. max with .041" dia. pin

Withdrawal force: 7.1 ozs. min with .039" dia. pin

Recommended wire size: 30 - 20 AWG

ACCESSORIES:

Backshells, dustcovers, hardware. Page 69

PACKAGING:

Anti-static plastic trays

APPROVALS AND CERTIFICATIONS:

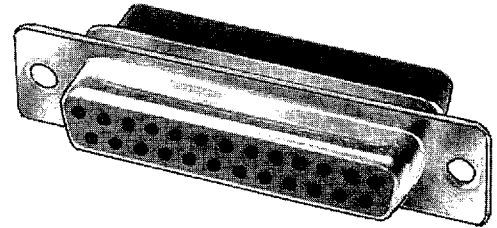
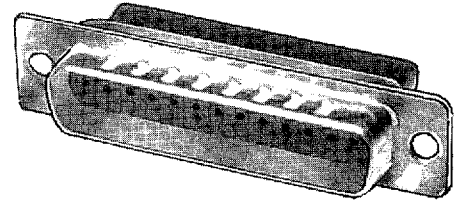
Recognized under the component program

of Underwriters Laboratories, Inc. No. E167232

Certified by Canadian Standards Association No. LR75112



D-SUBMINIATURE CRIMP AND POKE SYSTEM DPR / DSR SERIES



ORDERING INFORMATION

HOUSING

DB25

SR

SL

SHELL SIZE/ NO. OF POSITIONS

DE09 = 9 Position

DA15 = 15 Position

DB25 = 25 Position

DC37 = 37 Position

DD50 = 50 Position

MOUNTING OPTIONS

Blank = .120" diameter
mounting holes

SL = Riveted #4-40
clinch nuts

JS = Riveted #4-40
jackscrews

CONTACT TYPE

PR = Plug, Crimp and Poke

SR = Socket, Crimp and Poke

CONTACTS

DCP

01

R

CONTACT WIRE RANGE

DCP = Plug
Contact

DCS = Socket
Contact

CONTACT TYPE

01 = 26-24 AWG

02 = 22-20 AWG

03 = 30-28 AWG

PACKAGING

R = 5000 piece
reel

B = 1000 pieces
loose cut

OPTIONS:

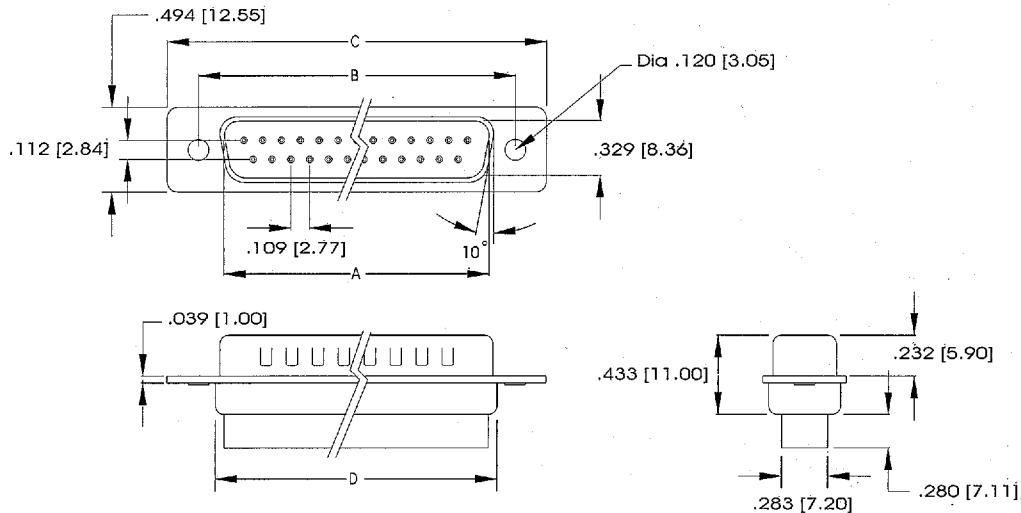
Add as suffix to basic part number

30 = 30 μ m gold in contact area

YW = Yellow chromate over zinc plated shell

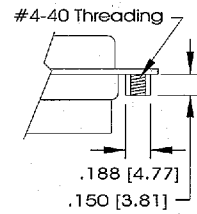
9017931 0000064 478

PLUG HOUSING

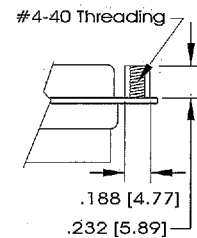


MOUNTING OPTIONS

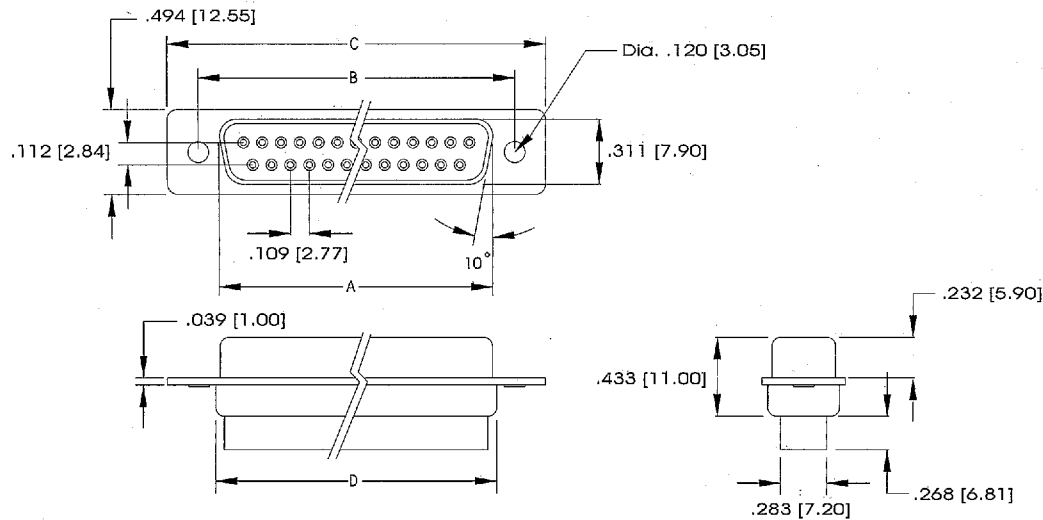
SL Option



JS Option

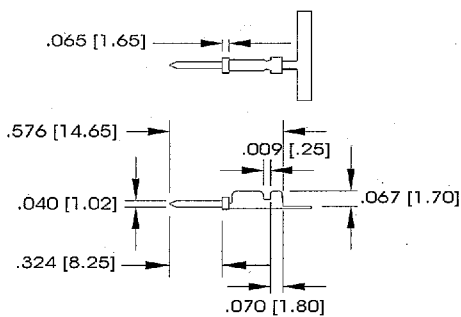


SOCKET HOUSING

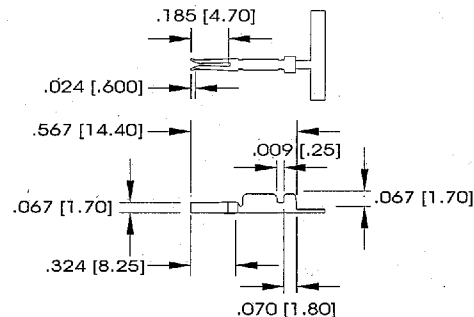


CRIMP CONTACTS

Plug Contact DCP



Socket Contact DCS



9017931 0000065 304