

MODULE 4 CONTACTS FOR 50 Ω



Mating cycles: minimum 60,000

 Non-magnetic

Frequency range¹: 0–1.3 GHz

TECHNICAL NOTES

- Crimp information see page [174](#)

TECHNICAL DATA

Frequency range ¹	0–1.3 GHz
Insulation resistance	> 100 GΩ

Voltage information acc. to MIL²

Operating voltage	350 V
Test voltage	1,050 V

Mechanical data

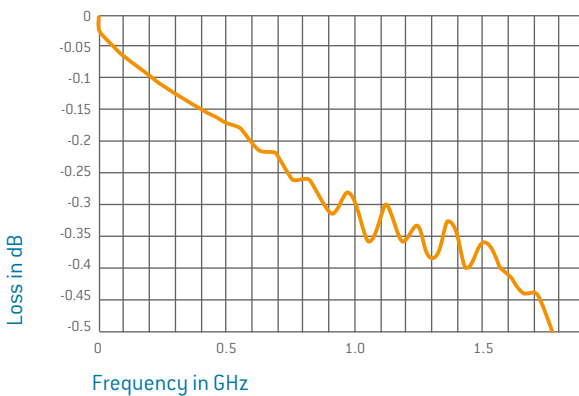
Total mating force (average)	17.8 N / Module
Total sliding force (average)	15.3 N / Module
Operating temperature	–40 °C to +125 °C
Mating cycles	minimum 60,000

Materials

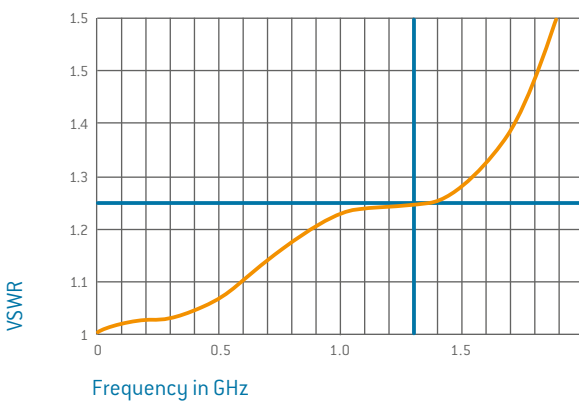
Insulator	Thermoplastic fiber glass reinforced acc. to UL 94
Contact body / Insulator	Cu alloy / PTFE
Contact spring	CuSn / CuBe alloy
Contact plating	Au over CuSnZn

HIGH FREQUENCY CHARACTERISTICS FOR 50 Ω COAX CONTACTS¹

Transmission loss



Voltage standing-wave ratio VSWR



¹ Loss levels depend on used conductor type at a VSWR of 1.25. Further are available on request. Tested with per 2 × 5 cm conductor length.

² See from page [194](#)

REMOVAL TOOL I (STRAIGHT)



Removal of the already assembled contact (incl. cable)

PART NUMBER: 087.170.139.000.000

REMOVAL TOOL I (ANGLED)



Removal of the already assembled contact (incl. cable)

PART NUMBER: 087.170.365.000.000

REMOVAL TOOL II



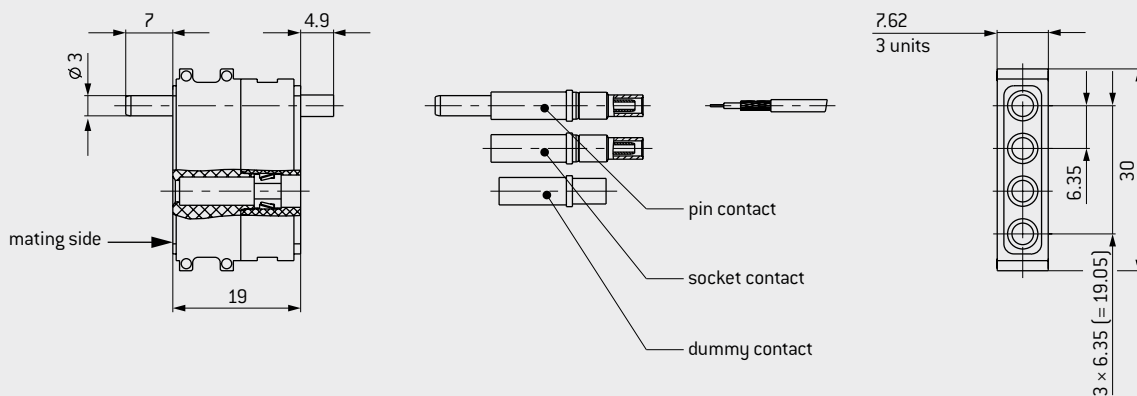
Removal of the still unassembled contact (without cable, which may have to be cut off)

PART NUMBER: 087.611.001.001.000

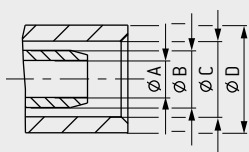
For an overview of all tools please see from page [183](#).



INSULATOR FOR PIN AND SOCKET

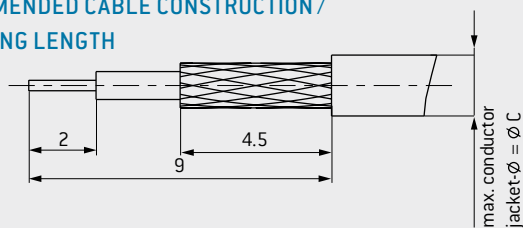


CABLE TERMINATION



Center contact: soldered, outer contact: crimped

RECOMMENDED CABLE CONSTRUCTION / STRIPPING LENGTH



Module 4 contacts	Part number
Insulator	611.149.104.923.000
Dummy contact	021.341.127.923.000

Description	Part number	Charac- teristic impedance Ω	Fre- quency range GHz	Cable ¹	A	B	C	D	Part number crimp inserts
Pin contact	122.120.001.270.000	50	1.3	RG 178 / RG 196	1.1	1.7	2.25	3.2	082.000.039.101.000
Pin contact	122.120.003.270.000		0.8	RG 174 / RG 188 / RG 316 (75 Ω: RG 179, RG 187)	1.75	2.7	3.2	3.8	082.000.039.102.000
Pin contact	122.120.011.270.000		0.85	G 02232 (H+S) ²	1.75	2.7	3.5	4.3	082.000.039.103.000
Socket contact	122.120.002.270.000	50	1.3	RG 178 / RG 196	1.1	1.7	2.25	3.2	082.000.039.101.000
Socket contact	122.120.004.270.000		0.8	RG 174 / RG 188 / RG 316 (75 Ω: RG 179, RG 187)	1.75	2.7	3.2	3.8	082.000.039.102.000
Socket contact	122.120.012.270.000		0.85	G 02232 (H+S) ²	1.75	2.7	3.5	4.3	082.000.039.103.000
Crimping tool for shielding sleeve	080.000.039.000.000								

¹Special lines and alternative models on request. ²Removal tool II is not possible due to the conductor diameter.