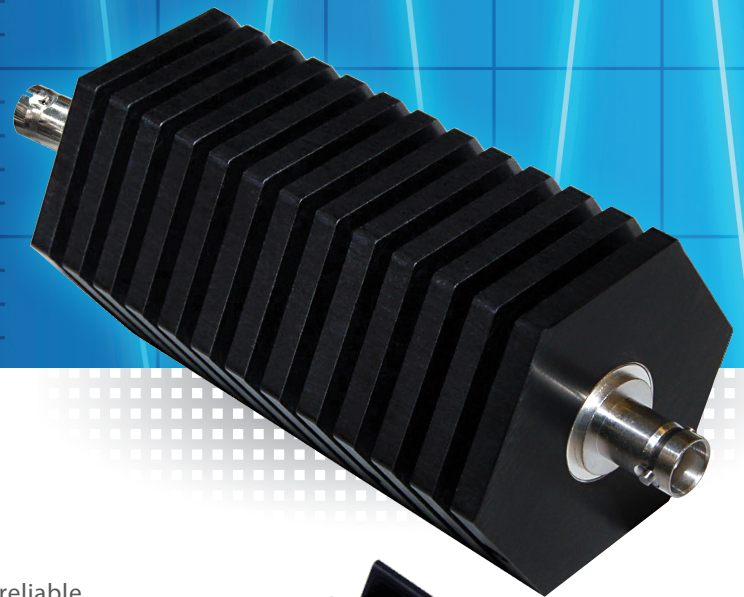


# CONVECTION COOLED Fully Shielded

## ATTENUATORS



### Superior Quality and Rugged Construction

Bird Convection Cooled RF Power Attenuators are a valuable and reliable accessory for reducing power levels, for isolating components under test, for harmonic signal analysis, and as comparison standards. They are world renowned for their high-quality, robust construction and conservative power ratings. These attenuators are fully shielded against production of extraneous radiation and the self-cooling design needs no cooling plate.

The broad line of available models offers full broadband operation and models to cover all LTE frequencies.

## Specifications

### SYSTEM

<b>Coolant Method</b>	Dry, Convection Cooled
<b>Impedance</b>	50 Ohm
<b>Operating Position</b>	Any
<b>PIM</b>	-110 dBc Min
<b>Standard Attenuation Values</b>	3, 6, 10, 20, 30 dB
<b>AC Power</b>	None

### ENVIRONMENTAL

<b>Ambient Temperature</b>	-40 °C to 40 °C (-40 °F to 104 °F)
<b>Humidity</b>	95% max (non-condensing)

# CONVECTION COOLED ATTENUATORS

## PART NUMBER DEFINITION

**Example:** 75-A-M/F-B-10 = 75 W, A-Type Attenuator with Male/Female BNC Connectors with an Attenuation Value of 10 dB.

Note: Not all combinations are valid. If assistance is needed consult the factory to define the model that is right for you.



Power Rating (W)	Product Type	Connector Gender	Connectors*	Attenuation Value (dB)
<b>Denote required power rating in W</b>	<b>A =</b> <b>SA =</b> <b>WA =</b>	<b>M/F =</b> Male/Female <b>F/F =</b> Female/ Female	<b>A =</b> SMA <b>B =</b> BNC <b>N =</b> N <b>T =</b> TNC <b>E =</b> IEC 7/16	<b>03 =</b> 3 dB <b>06 =</b> 6 dB <b>10 =</b> 10 dB <b>20 =</b> 20 dB <b>30 =</b> 30 dB

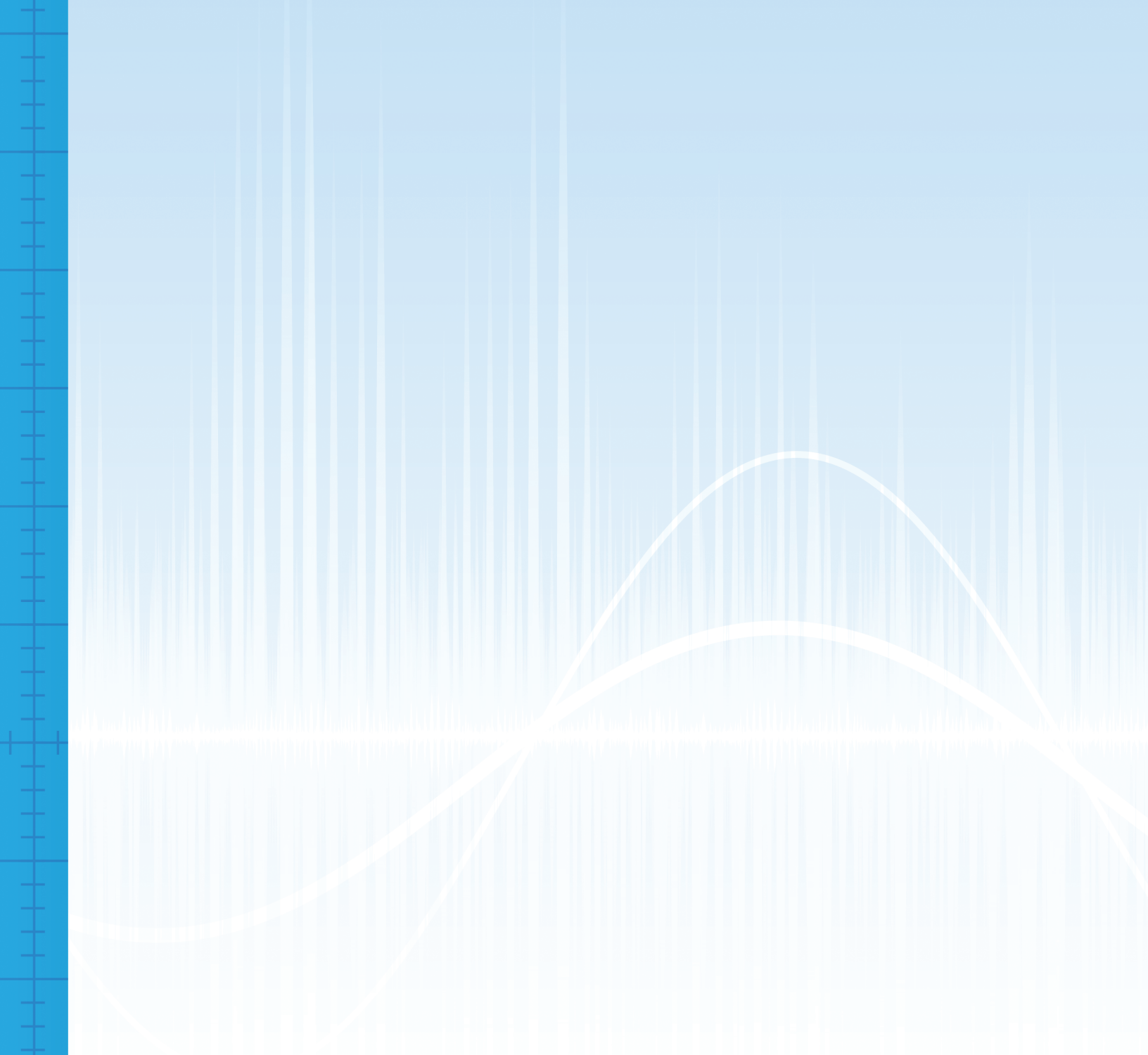
\*Call for custom connector options not shown

Product Type	Power Rating	Connector	VSWR & Frequency Range	Dimensions	Weight	Finish
2-A	2 W	BNC, N	1.10:1 from DC to 1 GHz 1.25:1 from 1 to 4 GHz	2.4 in x 0.8 in Dia. (61 mm x 21 mm Dia.)	3.1 oz 88 g	Tri-Alloy
2-A	2 W	SMA	1.15:1 from DC to 2.5 GHz 1.30:1 from 2.5 to 6 GHz	1.1 in x 0.4 in Dia. (27 mm x 11 mm Dia.)	1.2 oz 34 g	Stainless Steel
2-6A	2 W	N	1.25:1 from DC to 6 GHz	1.8 in x 0.9 in Dia. (46 mm x 23 mm Dia.)	2.5 oz 71 g	Stainless Steel
2-18A	2 W	SMA, N	1.15:1 from DC to 4 GHz 1.20:1 from 4 to 8 GHz 1.25:1 from 8 to 12.4 GHz 1.35:1 from 12.44 to 18 GHz	1.8 in x 0.9 in Dia. (46 mm x 23 mm Dia.)	2.5 oz 71 g	Stainless Steel
3-A	3 W	BNC, TNC	1.10:1 from DC to 1 GHz 1.25:1 from 1 to 4 GHz	1.5 in x 0.6 in Dia. (39 mm x 16 mm Dia.)	3.1 oz 88 g	Tri-Alloy
5-A	5 W	BNC, N, TNC	1.10:1 from DC to 1 GHz 1.25:1 from 1 to 4 GHz	2.6 in x 0.8 in Dia. (67 mm x 21 mm Dia.)	3.1 oz 88 g	Tri-Alloy
5-6A	5 W	N	1.25:1 from DC to 6 GHz	2.4 in x 0.9 in Dia. (61 mm x 23 mm Dia.)	3.0 oz 86 g	Stainless Steel
5-18A	5 W	SMA, N	1.15:1 from DC to 4 GHz 1.25:1 from 4 to 12.4 GHz 1.35:1 from 12.4 to 18 GHz	2.5 in x 0.9 in Dia. (64 mm x 23 mm Dia.)	3.5 oz 100 g	Stainless Steel
10-A	10 W	SMA, BNC, N, TNC	1.10:1 from DC to 1 GHz 1.25:1 from 1 to 4 GHz	2.8 in x 2.3 in Dia. (72 mm x 59 mm Dia.)	5.0 oz 142 g	Black Anodized Aluminum
10-6A	10 W	SMA, N	1.20:1 from DC to 6 GHz	2.5 in x 0.9 in Dia. (64 mm x 23 mm Dia.)	3.5 oz 100 g	Stainless Steel
10-18A	10 W	N	1.20:1 from DC to 4 GHz 1.30:1 from 4 to 12.4 GHz 1.45:1 from 12.4 to 18 GHz	2.5 in x 0.9 in Dia. (64 mm x 23 mm Dia.)	3.5 oz 100 g	Stainless Steel
25-A	25 W	SMA, BNC, 7/16 DIN, N, TNC	1.10:1 from DC to 1 GHz 1.25:1 from 1 to 4 GHz	5.3 in x 2.3 in Dia. (135 mm x 59 mm Dia.)	9.0 oz 256 g	Black Anodized Aluminum
25-6A	25 W	N	1.20:1 from DC to 6 GHz	4.2 in x 2.3 in x 2.3 in (107 mm x 59 mm x 59 mm)	13.5 oz 383 g	Stainless Steel
25-18A	25 W	N	1.20:1 from DC to 4 GHz 1.30:1 from 4 to 12.4 GHz 1.45:1 from 12.4 to 18 GHz	4.2 in x 2.3 in x 2.3 in (107 mm x 59 mm x 59 mm)	13.5 oz 383 g	Stainless Steel

# CONVECTION COOLED ATTENUATORS

Product Type	Power Rating	Connector	VSWR & Frequency Range	Dimensions	Weight	Finish
50-A	50 W	SMA, BNC, 7/16 DIN, N, TNC	1.10:1 from DC to 1 GHz 1.25:1 from 1 to 3.0 GHz	6.4 in x 2.3 in Dia. (163 mm x 59 mm Dia.)	1.0 lb (454 g)	Black Anodized Aluminum
50-6A	50 W	N	1.20:1 from DC to 6 GHz	4.7 in x 3.0 in x 3.0 in (120 mm x 77 mm x 77 mm)	1.7 lb (772 g)	Stainless Steel
50-18A	50 W	N	1.25:1 from DC to 6 GHz 1.35:1 from 6 to 12.4 GHz 1.45:1 from 12.4 to 18 GHz	4.7 in x 3.0 in x 3.0 in (120 mm x 77 mm x 77 mm)	1.7 lb (772 g)	Stainless Steel
75-A	75 W	SMA, BNC, 7/16 DIN, N, TNC	1.10:1 from DC to 1 GHz 1.25:1 from 1 to 3.0 GHz	7.3 in x 2.3 in Dia. (186 mm x 59 mm Dia.)	1.6 lb (726 g)	Black Anodized Aluminum
100-A	100 W	SMA, BNC, 7/16 DIN, N	1.10:1 from DC to 1 GHz 1.25:1 from 1 to 3.0 GHz	7.3 in x 2.6 in x 6.4 in (186 mm x 67 mm x 163 mm)	3.6 lb (1.6 kg)	Black Anodized Aluminum
100-6A	100 W	N	1.20:1 from DC to 2 GHz 1.35:1 from 2 to 4 GHz 1.40:1 from 4 to 6 GHz	6.4 in x 2.7 in x 3.8 in (163 mm x 69 mm x 97 mm)	2.4 lb (1.7 kg)	Stainless Steel
100-SA	100 W	BNC, 7/16 DIN, N	1.10:1 from DC to 1 GHz 1.25:1 from 1 to 2.4 GHz	8.4 in x 2.8 in x 2.8 in (214 mm x 72 mm x 72 mm)	3.0 lb (1.4 kg)	Black Anodized Aluminum
150-A	150 W	BNC, 7/16 DIN, N	1.10:1 from DC to 1 GHz 1.25:1 from 1 to 3.0 GHz	6.7 in x 2.6 in x 11.9 in (171 mm x 67 mm x 303 mm)	6.6 lb (3.0 kg)	Black Anodized Aluminum
150-SA	150 W	SMA, BNC, 7/16 DIN, N	1.10:1 from DC to 1 GHz 1.25:1 from 1 to 2.4 GHz	9.1 in x 4.0 in x 5.0 in (232 mm x 102 mm x 127 mm)	5.5 lb (2.5 kg)	Black Anodized Aluminum
150-WA	150 W	BNC, 7/16 DIN, N	1.10:1 from DC to 1 GHz 1.25:1 from 1 to 2.4 GHz	5.6 in x 5.4 in x 4.3 in (143 mm x 138 mm x 110 mm)	2.5 lb (1.2 kg)	Black Anodized Aluminum
300-A	300 W	BNC, 7/16 DIN, N, TNC	1.10:1 from DC to 1 GHz 1.25:1 from 1 to 2.4 GHz	7.3 in x 5.4 in x 10.9 in (186 mm x 138 mm x 277 mm)	12.0 lb (5.5 kg)	Black Anodized Aluminum
300-WA	300 W	BNC, 7/16 DIN, N, TNC	1.10:1 from DC to 1 GHz 1.25:1 from 1 to 2.4 GHz	9.0 in x 5.4 in x 4.8 in (229 mm x 138 mm x 122 mm)	4.6 lb (2.1 kg)	Black Anodized Aluminum
500-WA	500 W	7/16 DIN, N	1.10:1 from DC to 1 GHz 1.25:1 from 1 to 2.4 GHz	12.4 in x 5.4 in x 4.8 in (315 mm x 138 mm x 122 mm)	7.9 lb (3.6 kg)	Black Anodized Aluminum
600-A	600 W	7/16 DIN, N	1.10:1 from DC to 1 GHz 1.25:1 from 1 to 2.4 GHz	12.7 in x 9.4 in x 9.6 in (323 mm x 239 mm x 244 mm)	21.5 lb (9.8 kg)	Black Anodized Aluminum
1000-A***	1000W	7/16 DIN, N	1.10:1 from DC to 1 GHz 1.25:1 from 1 to 2.4 GHz	13.6 in x 12.8 in x 9.6 in (346 mm x 326 mm x 244 mm)	26.5 lb (12.0 kg)	Black Anodized Aluminum
1000-WA***	1000 W	7/16 DIN, N	1.10:1 from DC to 1 GHz 1.25:1 from 1 to 2.4 GHz	19.6 in x 10.6 in x 4.8 in (498 mm x 270 mm x 122 mm)	26.5 lb (12.0 kg)	Black Anodized Aluminum
1500-WA***	1500 W	7/16 DIN, N	1.10:1 from DC to 1 GHz 1.25:1 from 1 to 2.4 GHz	20.4 in x 10.7 in x 5.9 in (519 mm x 272 mm x 150 mm)	30.0 lb (13.6 kg)	Black Anodized Aluminum

\*\*\*Note: attenuators 1000 W and above are not available in attenuation values less than 10 dB



[birdrf.com/products](http://birdrf.com/products)

The **RF** Experts | USA Sales : 30303 Aurora Rd, Solon, OH 44139 | [www.birdrf.com](http://www.birdrf.com)  
Phone: +1 440.248.1200 / 866.695.4569 [Toll Free] | Fax: +1 440.248.5426 / 866.546.4306 [Toll Free]

Bird is not responsible for omissions or errors. Specifications subject to change without notice.  
©2020 Bird • Convection-Cooled-Attenuators-08252020

