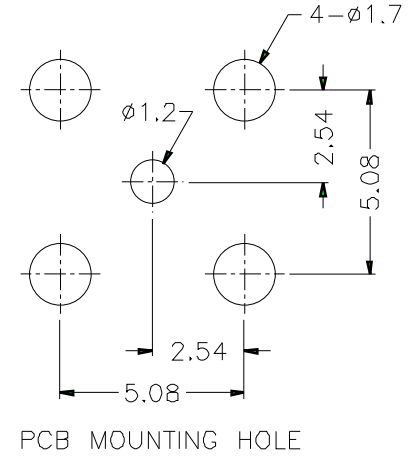
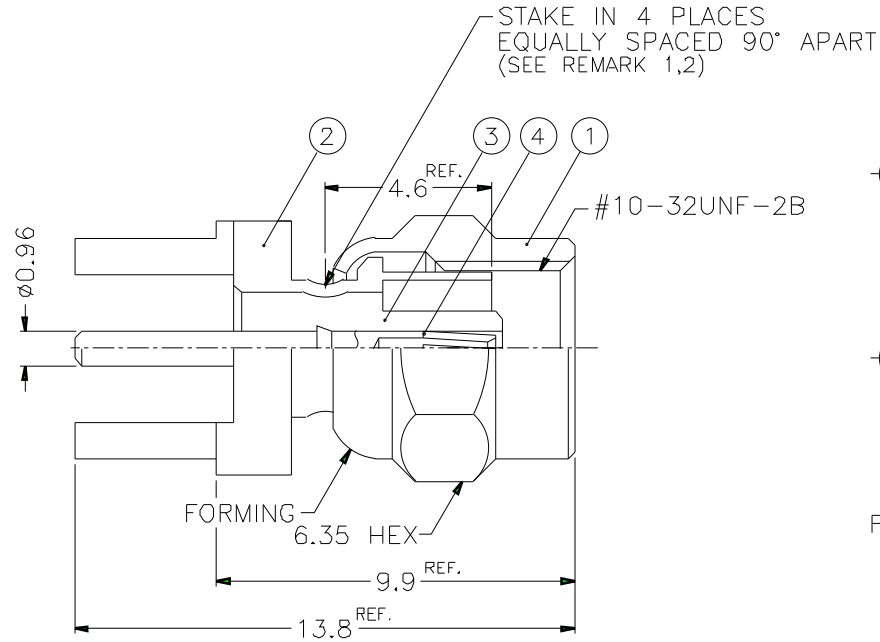
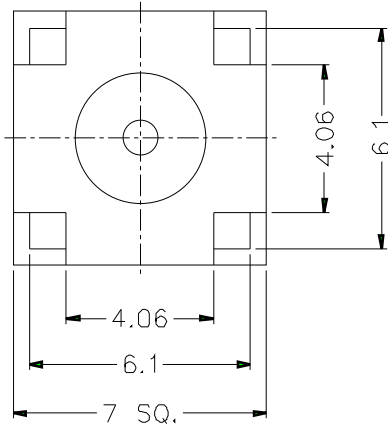


ISS		ZONE		REVISIONS		DESCRIPTION\PER REQUEST\DATE	



NOTES: FINISH (PLATING THICKNESS IN MICRO-INCHES)

- BRASS PER QQ-B-626
- NICKEL PL. 100 MIN. THICK OVER COPPER STRIKE
- BERYLLIUM COPPER PER QQ-C-530
- GOLD PL. 30 MIN. THICK OVER NICKEL PL. 100 MIN. THICK OVER COPPER STRIKE
- TEFLON MIL-P-19468

- REMARK: 1. NO.3 MUST WITHSTAND A 4 lbs. MIN. PUSHOUT FORCE FROM NO.2 AFTER STAKING OPERATION
2. REMARK1 IS MAINTAINED BY STAMPING THE FOUR POINTS SHOWN ON THE DRAWING WITHOUT PUNCTURING NO.2

DIMENSIONS ARE IN MILLIMETERS				PART NO. SMC6251B1-NT30G-50	
UNLESS OTHERWISE SPECIFIED TOLERANCES 0.5-6 = ±0.2 6-30 = ±0.4 30-120 = ±0.6 120-315 = ±1 315-1000 = ±1.6 1000-2000 = ±2.4				APPROVED	DATE 10-11-01'
				CHECKED	DATE 10-11-01'
				DRAWN	DATE 10-11-01'
				SCALE 5/1	ISSUE A

Amphenol	
TITLE SMC P.C. MOUNT PLUG	
DRAWING NO. KJ-SMC6251B1-NT30G-50	
ITEM NO.	

NO	DESCRIPTION	MATERIAL	FINISH	Q'TY	DRAWING NO.
4	CONTACT PIN	NOTE 3	NOTE 4	1	SMC6252B1-4
3	INSULATOR	NOTE 5	NATURAL	1	SMC6251B1-3
2	BODY	NOTE 1	NOTE 2	1	SMC6251B1-2
1	SHELL	NOTE 1	NOTE 2	1	SMC6121A1-1

1 2 3 4 5 6 7 8