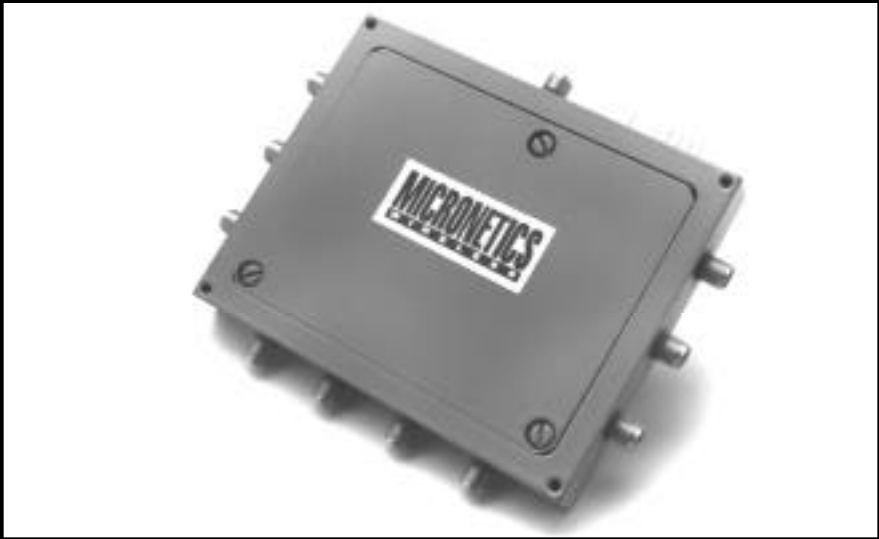
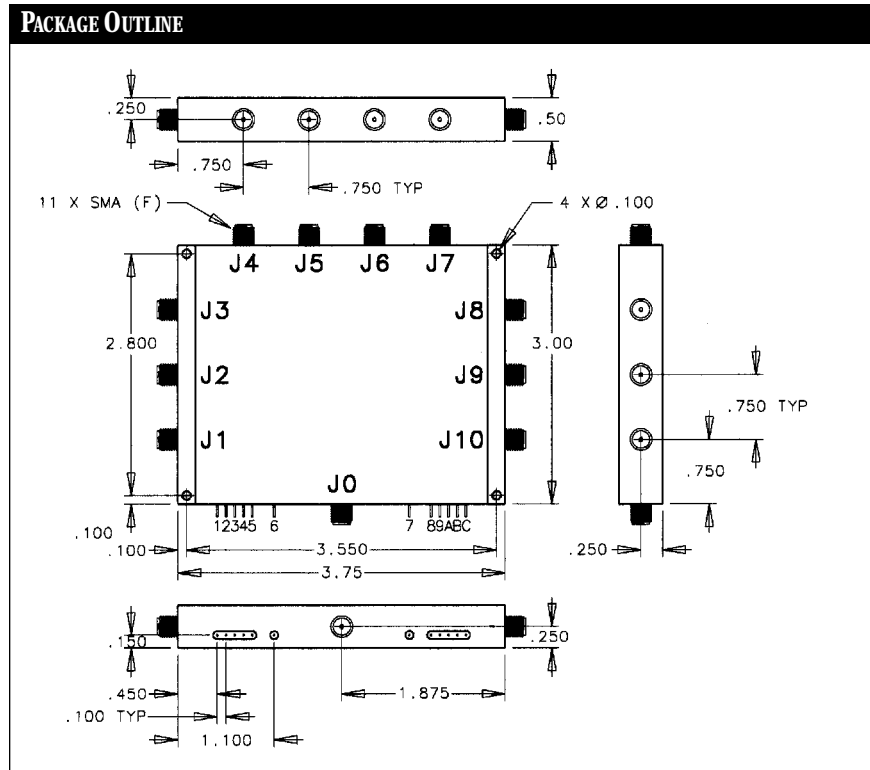


# SINGLE POLE, TEN THROW CONNECTORIZED SWITCHES



ELECTRICAL CHARACTERISTICS								
PART #	TYPE	FREQ RANGE GHz	LOSS dB	ISO dB	VSWR	SWITCH SPEED ns	RF POWER dBm	DC SUPPLY Volts
6073	SP10T N	1-10	3.5	60	2.0:1	20	25	+5,-5
6074	SP10T N	.05-1	1.5	40	2.0:1	1000	30	+5,-15



## DESCRIPTION

High performance wideband switches featuring ultra-fast switching speed and/or high power handling and low distortion. Hermetic, military/industrial design.

## ADDITIONAL FEATURES (#6073)

■ Switching speed:  
<20 ns

## CONNECTORS

■ SMA

## OPERATING ENVIRONMENT

■ Operating Temperature:  
-55 to +125°C

■ Storage Temperature:  
-65 to +150°C

■ Impedance:  
50 ohm

■ Control:  
Transistor-Transistor Logic (TTL)

## APPLICATIONS

- Radar blanking
- Electronic Intelligence (ELINT)
- High speed synthesizers