

Knife Disconnect Splices

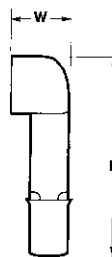
Wire Size Range

AWG 22 to 8,
CMA 509 to 20,800
[0.26 to 10.5 mm²]

Material

Splice Body and Sleeve — Copper
per ASTM B-152

Plating — Tin per MIL-T-10727



Wire Size Circular Mils [mm ²]	Dimensions		Part Numbers Loose Piece
	L Max.	W	
22-16 509-3,260 [0.26-1.65]	.745 18.92	.203 5.16	31762
16-14 2,050-5,180 [1.04-2.62]	.750 19.05	.203 5.16	31763
12-10 5,180-13,100 [2.62-6.64]	.940 23.88	.281 7.14	31945
8 13,100-20,800 [6.64-10.5]	1.225 31.12	.390 9.91	32161

Rectangular Tongue Terminals

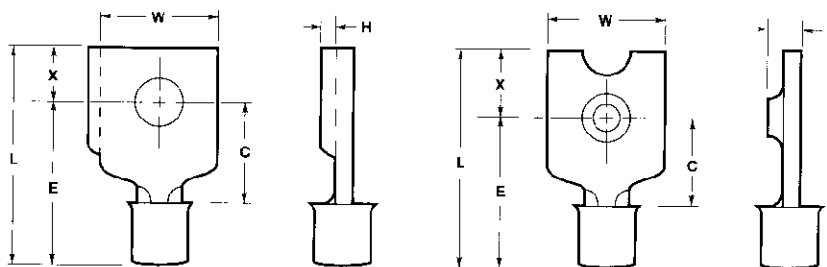
Wire Size Range

AWG 22 to 14,
CMA 509 to 5,180
[0.26 to 2.62 mm²]

Material

Terminal Body and Sleeve —
Copper per ASTM B-152

Plating — Tin per MIL-T-10727



Style A
with Side Flange

Style B
with Bossed Hole

Wire Size Circular Mils [mm ²]	Stud Size	Style	Dimensions						Material Thickness Max.	Part Numbers Loose Piece
			L Max.	E Max.	C Min.	W	X	H		
22-16 509-3,260 [0.26-1.65]	6 M3.5	B	.733 18.62	.541 13.74	.250 6.35	.250 6.35	.187 4.75	.047 1.19	.033 0.84	320671
16-14 2,050-5,180 [1.04-2.62]	8 M4	A	.647 16.43	.484 12.29	.219 5.56	.344 8.74	.156 3.96	.094 2.39	.033 0.84	31674

Note: "C" dimension applies from edge of metal wire barrel to center of stud hole.

Standard "B"
Terminals and Splices