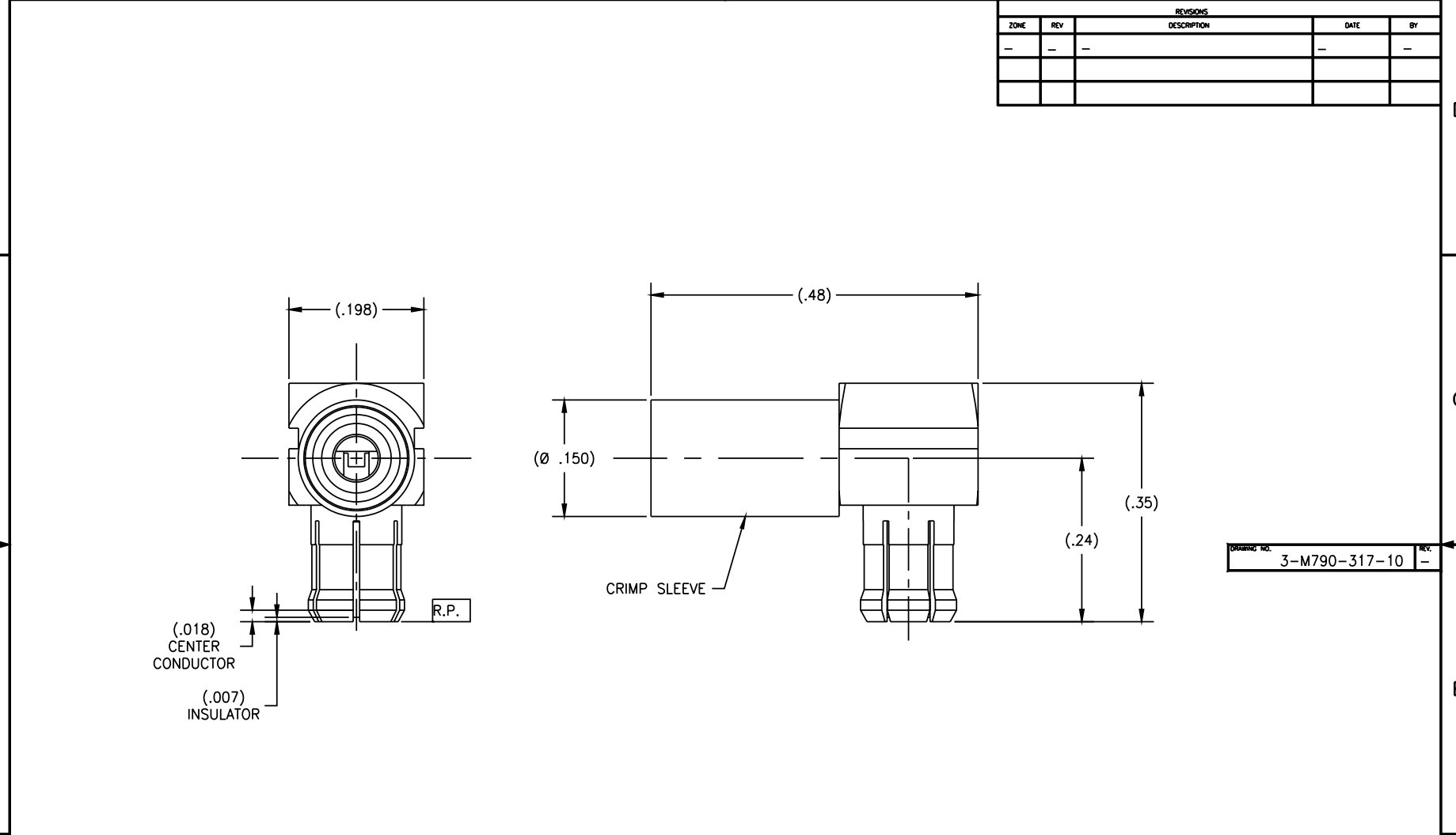


4 3 2 1



DRAWING NO. 3-M790-317-10 REV. -

NOTE(S):

1. MATERIAL(S)
  - 1.1 BODY MCX, CAP: BRASS ALLOY PER ASTM B-16
  - 1.2 BODY CABLE, CENTER CONDUCTOR: BeCu ALLOY PER ASTM B-196.
  - 1.3 INSULATOR: PTFE PER ASTM D-1710.
  - 1.4 CRIMP SLEEVE: COPPER TUBING PER ASTM-C-12200.
2. FINISH(ES):
  - 2.1 BODY MCX, BODY CABLE, CENTER CONDUCTOR, CAP, CRIMP SLEEVE: GOLD PLATE PER ASTM B-488 OVER NICKEL PLATE PER AMS-QQ-N-290.
  - 2.2 INSULATOR: NONE

**NOTICE**  
 THIS DRAWING EMBODIES A CONFIDENTIAL PROPRIETARY DESIGN ORIGINATED BY TENSOLITE COMPANY AND ALL DESIGN, MANUFACTURING, REPRODUCTION, USE AND SALE RIGHTS REGARDING THE SAME ARE EXPRESSLY RESERVED. IT IS SUBMITTED UNDER A CONFIDENTIAL RELATIONSHIP FOR A SPECIFIED PURPOSE AND THE RECIPIENT AGREES BY ACCEPTING THIS DRAWING NOT TO SUPPLY OR DISCLOSE ANY INFORMATION REGARDING IT TO ANY UNAUTHORIZED PERSON TO INCORPORATE IN OTHER PRODUCTS ANY SPECIAL FEATURES PECULIAR TO THIS DESIGN. ALL PATENT RIGHTS HERETO ARE EXPRESSLY RESERVED BY TENSOLITE COMPANY, LONG BEACH, CALIFORNIA 90815.

TOLERANCES AND NOTES EXCEPT AS NOTED		SEE NOTES		SEE NOTES	
DIMENSIONS ARE IN INCHES.		MATERIAL		SIZE	
LINEAR .XX ±.010		NEXT ASSY		SPECIFICATION	
ANGULAR ± 1/2°		APPROVAL INITIALS		PROCUREMENT	
FRACTION 1/32		DATE		HIGH PERFORMANCE CABLES & INTERCONNECT SYSTEMS	
1. MACHINE FINISH: $\frac{16}{32}$ RMS		12.30.02		Long Beach, California 90815	
2. BREAK ALL SHARP EDGES .005 MAX.		DRAWN BY: AGK		TITLE: MCX MALE RIGHT ANGLE TO RG-316 FLEX CABLE	
3. MACHINED FILLETS .005 MAX.		CHECKED		SCALE: 10/1	
4. MACHINED SURFACES SQUARE TO RESPECTIVE AXIS WITHIN .005 INCHES PER INCH.		QUALITY		SUB-DIRECTORY/FILENAME	
5. MACHINED DIAMETERS CONCENTRIC WITHIN .002 I.P.R.		ENGINEERING: ATV		DATE: 01.09.03	
6. DIMENSIONS TO BE MET BEFORE PLATING.		DATE: 01.09.03		SHEET 1 OF 1	
7. CHAMFER ALL THREADS 45°.		SIZE: C		CAGE CODE: 30990	
8. THREADS PER 11-38		DRAWING NO.:		3-M790-317-10	
9. REMOVE FINED EDGES ON TEFLON.		REV.:		-	
10. REMOVE ALL BURRS.		REV.:		-	

D  
C  
B  
A

D  
C  
B  
A

4 3 2 1