

# C TRIAX SERIES

The C triax series was designed to accommodate the larger size triaxial cables. It is the same physical size as the standard 'C' series and has the same mating action. These connectors only mate within their own series.

**MATERIALS:** Brass per QQ-B-626 composition 22½ HD.  
Beryllium copper per QQ-C-530 heat treated to condition HT.  
Teflon per L-P-503  
Rubber per ZZ-R-765

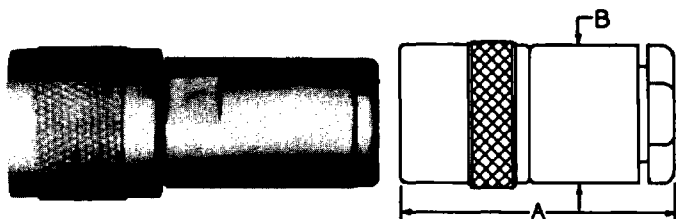
**FINISHES:** Silver plating per QQ-S-365  
Gold plating per MIL-G-45204  
Proprietary bright nickel (IP23)

**ELECTRICAL:** Impedance - non constant  
Insulation resistance: 5000 Megohms  
Voltage rating: 500 VRMS  
Contact resistance: Center 2.0 MILLIOHMS max.  
Intermediate .5 MILLIOHMS max.  
Outer .5 MILLIOHMS max.

**ENVIRONMENTAL:** Temperature range: -65° to + 165°C  
Salt spray test per MIL-STD-202 (Method 101)  
Moisture resistance test per MIL-STD-202 (Method 106)

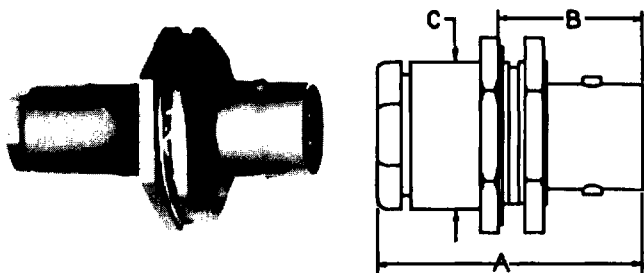
# C TRIAx SERIES

## C TRIAX PLUG



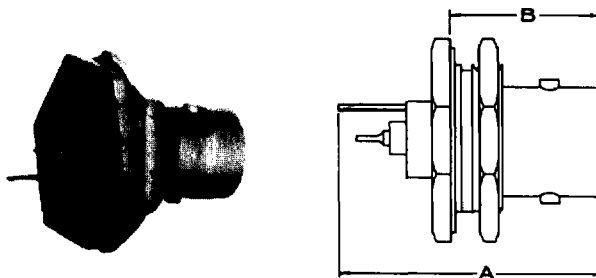
S/C Part No.	Triaxial Cable	Dimension		Engr. Data
		A	B	
34P100-1	Essex 21-583	2-1/16	3/4	
34P100-2	Essex 21-527	2-1/16	3/4	
34P100-3	Essex 21-529	2-1/16	3/4	

## C TRIAX JACK — SINGLE HOLE MOUNT



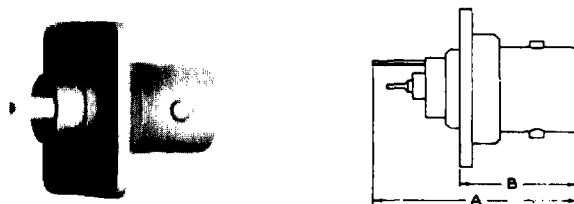
S/C Part No.	Triaxial Cable	Dimension			Mtg. Hole	Engr. Data
		A	B	C		
34JS100-1	Essex 21-583	1-31/32	3/4	3/4	D2	
34JS100-2	Essex 21-527	1-31/32	3/4	3/4	D2	
34JS100-3	Essex 21-529	1-31/32	3/4	3/4	D2	

## C TRIAX JACK RECEPTACLE — SINGLE HOLE MOUNT



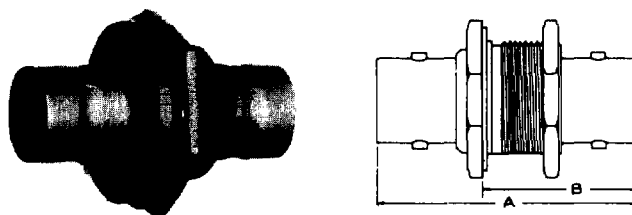
S/C Part No.	Dimension		Mtg. Hole	Engr. Data
	A	B		
34JR100-1	1-5/16	53/64	D2	

## C TRIAX JACK RECEPTACLE — FLANGE MOUNT



S/C Part No.	Dimension		Mtg. Plate	Engr. Data
	A	B		
34JR102-1	1-5/16	3/4	1C	

## C TRIAX ADAPTER — JACK-JACK — SINGLE HOLE MOUNT



S/C Part No.	Dimension		Mtg. Hole	Engr. Data
	A	B		
34AS102-1	1-21/32	1	D2	