



TERMINAL INDEX

ARMEL stand-off terminals, both standard size and miniature, meet the most exacting demands of various electrical and electronic applications for tie points, insulators, and wire terminuses.

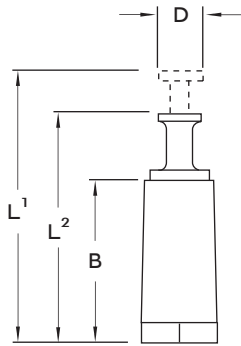
Available with either a PLASTIC or METAL BASE, each terminal is individually inspected to provide our customers with ARMEL quality components.

Solder terminals, mounting studs, insulations, and platings may be varied to meet customer's specifications.

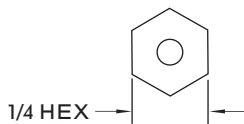
STYLE	PART	PAGE
MINIATURE TYPES	DTS	1
	DTMS	2
	DTR	3
	DTMR	4
	STMTC	2
	DTMSC	3
	DLTMS	4
TURRET TYPES	DLTS	5
	DLTMS	6
	DLTR	7
	DLTMR	8
	DBS	9
	DBMS	10
	DBR	11
	DBMR	12
	TT	13
	STT	14
BIFURCATED TYPES	ATT	15
	TMT	16
	STMT	17
	ATMT	18
	TS	19
	STS	20
	ATMS	21
	TMS	22
	STMS	23
	ATMS	24
THREADED TYPE	TR	25
	STR	26
	ATR	27
	TLR	28
	STLR	29
	ATLR	30
	TMRR	31
	STMRR	32
STRAIGHT TYPE	ATMR	33
	BT	34
	SBT	35
	BMT	36
	SBMT	37
	BS	38
	SBS	39
	BMS	40
SBMS	41	
FEED-THROUGH TYPE	BR	42
	SBR	43
	BLR	44
	SBLR	45
MULTI-FEED TYPE	BMR	46
	SBMR	47
	BMRR	48
	SBMRR	49
TERMINAL BOARD	SIT	50
	PT	51
	SMT	52
	PMT	53
MULTI-FEED TYPE	ITS	54
	SS	55
	ITMS	56
	SMS	57
MULTI-FEED TYPE	RTT	58
	RTS	59
MULTI-FEED TYPE	RTMT	60
	RTMS	61
MULTI-FEED TYPE	FT-85	62
	FT-86	63
MULTI-FEED TYPE	TB SERIES	64,65,66
	GSTMTC	67
MULTI-FEED TYPE	GSTMSC	68
	ORDERING INSTRUCTIONS AND MATERIALS SPECIFICATIONS	69



TURRET SERIES



T THREAD DEPTH



METAL BASE SHOWN

PLASTIC BASE	METAL BASE	THREAD SIZE	DIMENSIONS					BREAKDOWN VOLTS AC	
			B	L ¹	L ²	D	T		
TT-12	TMT-12	4-40	3/8	23/32	19/32	9/64	5/32	6,000	
TT-12-6	TMT-12-6	6-32							
TT-16	TMT-16	4-40	1/2	27/32	23/32		7/32		9,000
TT-16-6	TMT-16-6	6-32							
TT-17	TMT-17	4-40	17/32	7/8	3/4				
TT-17-6	TMT-17-6	6-32							
TT-19	TMT-19	4-40	19/32	15/16	13/16	12,000			
TT-19-6	TMT-19-6	6-32							

STT-12	STMT-12	4-40	3/8		19/32	9/64	5/32	6,000
STT-12-6	STMT-12-6	6-32						
STT-16	STMT-16	4-40	1/2	23/32	7/32		9,000	
STT-16-6	STMT-16-6	6-32						
STT-17	STMT-17	4-40	17/32	3/4				
STT-17-6	STMT-17-6	6-32						
STT-19	STMT-19	4-40	19/32	13/16	12,000			
STT-19-6	STMT-19-6	6-32						

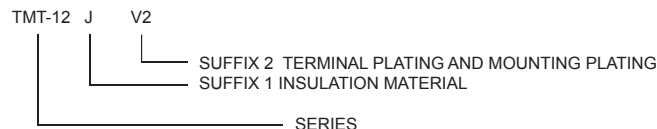
ATT-12	ATMT-12	4-40	3/8	5/8	17/32	3/32	5/32	6,000	
ATT-12-6	ATMT-12-6	6-32							
ATT-16	ATMT-16	4-40	1/2	3/4	21/32		7/32		9,000
ATT-16-6	ATMT-16-6	6-32							
ATT-17	ATMT-17	4-40	17/32	25/32	11/16				
ATT-17-6	ATMT-17-6	6-32							
ATT-19	ATMT-19	4-40	19/32	27/32	3/4	12,000			
ATT-19-6	ATMT-19-6	6-32							

SEE PAGE 20 FOR MATERIAL SPECIFICATIONS AND ORDERING INSTRUCTIONS.

ORDERING INSTRUCTIONS



MATERIAL CERTIFICATIONS



SUFFIX 1

- J DIALLYL PHTHALATE, GLASS-FIBER FILLED PER MIL-M-14, TYPE GDI 30F
- L DIALLYL PHTHALATE, GLASS-FIBER FILLED PER MIL-M-14, TYPE SDG-F
- L2 DIALLYL PHTHALATE, GLASS-FIBER FILLED PER MIL-M-14, TYPE SDG-F
COLOR BLACK
- H DIALLYL PHTHALATE, ORLON-FILLED PER MIL-M-14, TYPE SDI-5

SUFFIX 2

- NONE NO SUPPLEMENTARY CONTACT TERMINAL FINISH, OR
HOT SOLDER DIP, CENTRIFUGED AND REFLOWED, SOLDER PER QQ-S-571
(STANDARD NO SUFFIX REQUIRED)
- F SOLDER (60-40) WITH WATER SOLUBLE ROSIN FLUX

- V2 GOLD PLATE (0.00005) PER MIL-G-45204, TYPE II, CLASS 1 OVER COPPER
PLATE

OTHER PLATINGS AVAILABLE UPON REQUEST

GENERAL

1. MEET OR EXCEED APPLICABLE REQUIREMENTS OF MIL-T-55155
2. CONTACTS GOLD PLATED FOR LOW CONTACT RESISTANCE

MATERIAL AND FINISH SPECIFICATIONS

STAINLESS STEEL	QQ-S-763/766 TYPE 303 (NON-MAGNETIC)
BRASS	QQ-B-626
CADMIUM PLATE	QQ-P-416, TYPE II, CLASS 2
NICKEL PLATE	QQ-N-290, TYPE VI, CLASS 1
PASSIVATE	AMS-2700

ARMEL ELECTRONICS, INC.

1601 75TH STREET NORTH BERGEN, NJ 07047

FAX 201-869-4304

WEBSITE WWW.ARMELELECTRONICS.COM

E-MAIL INFO@ARMELELECTRONICS.COM