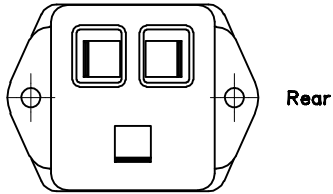
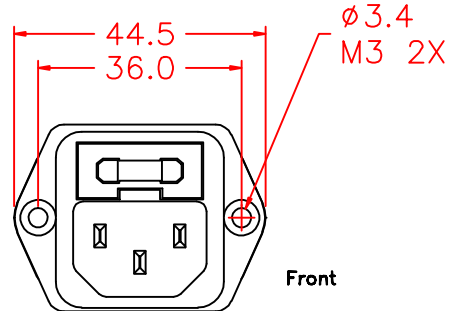
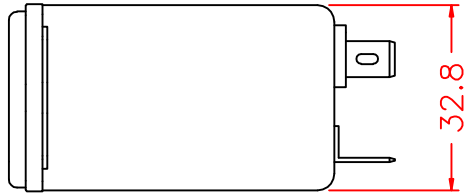
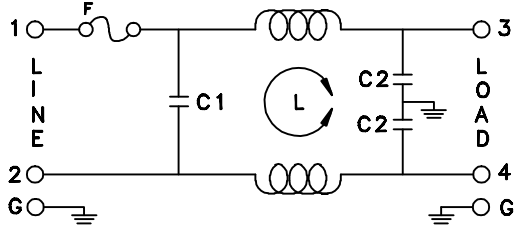
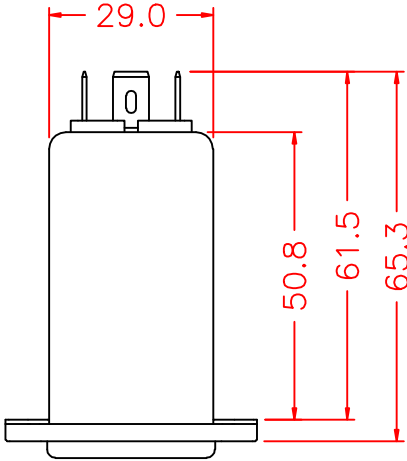
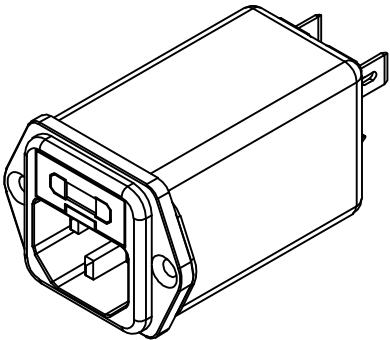
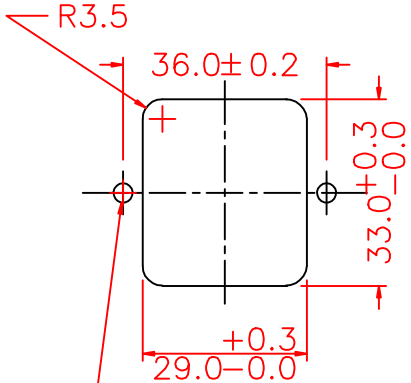


L: 1.3mH  
 C1: 0.1uF  
 C2: 3300pF

Maximum Leakage Current (L-G) @115VAC/60Hz	Maximum Leakage Current (L-G) @250VAC/50Hz	Min. common mode insertion loss (L-G) (dB in 50 ohm sys.) Freq. - MHz	
		.01 .05 .10 .15 .50 1.0 5.0 10 30	/ / 15 20 30 35 50 55 45
0.25mA	0.45mA	Min. differential mode insertion loss (L-L) (dB in 50 ohm sys.) Freq. - MHz	
		.01 .05 .10 .15 .50 1.0 5.0 10 30	/ / 4 6 15 20 40 45 45



SUGGESTED MOUNTING CUTOUT  
 (MOUNTING FROM FRONT)



3.5(x2)[See Note 1]

Note 1: Recommended diameter for thru-hole (screw/nut combination) hardware mounting method. Other methods will require holes with different dimensions and parameters.

THIS DOCUMENT AND ITS CONTENTS ARE THE PROPRIETARY CONFIDENTIAL PROPERTY OF INTERPOWER CORPORATION. NO USE OR COPIES MAY BE MADE WITHOUT WRITTEN PERMISSION FROM INTERPOWER CORPORATION.				DIMENSIONS IN MILLIMETERS		TITLE EMI FILTER	
				DRAFT BY: <b>ATS/NWH</b> DATE: <b>04/24/08</b>		PART NUMBER: <b>83510460</b>	
				DRAFTING APPROVAL: <b>JPC</b> DATE: <b>05/23/08</b>			
A Added dimension info. to cutout screw holes and Note 1. DDF 4/3/12				MATERIAL:		DO NOT SCALE	
REV CHANGE DESCRIPTION DATE						INTERPOWER CORPORATION	
						SHEET <b>01</b> <b>1</b>	