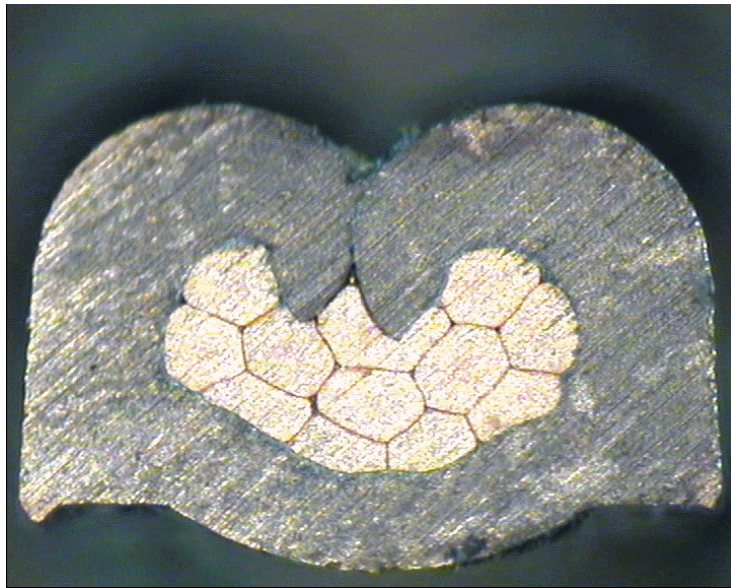


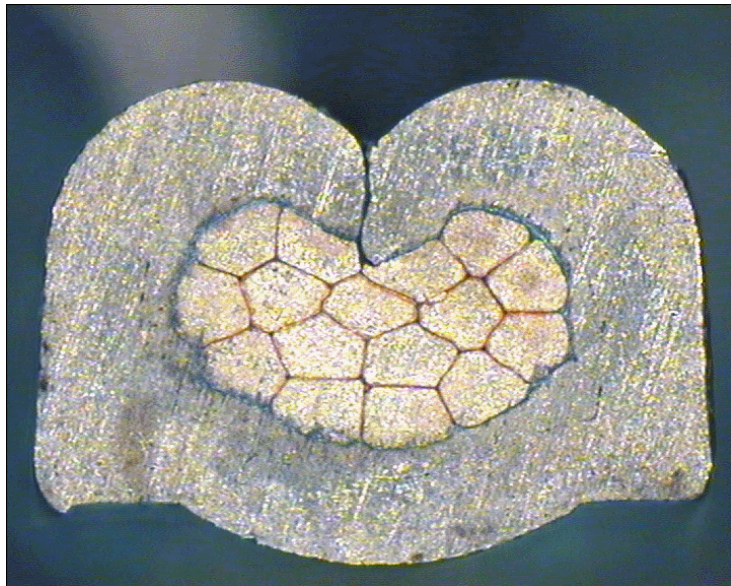
DELPHI PN 15440183



cable:
 $0,35 \text{ mm}^2 = 12 \times 0,21 \text{ mm}$

crimp height:
0,95 mm

crimp width:
1,45 mm



cable:
 $0,50 \text{ mm}^2 = 16 \times 0,21 \text{ mm}$

crimp height:
1,05 mm

crimp width:
1,45 mm