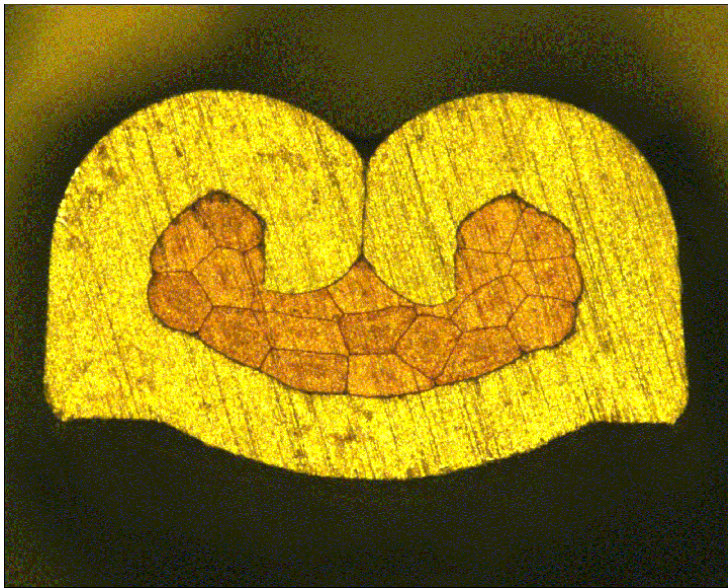




DELPHI PN 12191812



cable:  
 $0,75 \text{ mm}^2 = 19 \times 0,24 \text{ mm}$

crimp height:  
1,25 mm

crimp width:  
2,05 mm



cable:  
 $1,00 \text{ mm}^2 = 19 \times 0,27 \text{ mm}$

crimp height:  
1,40 mm

crimp width:  
2,10 mm