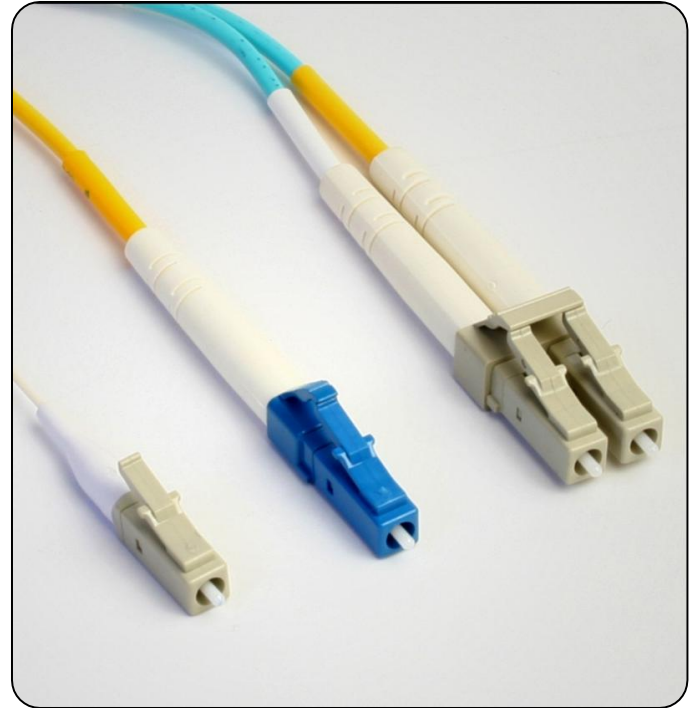


Amphenol LC Connectors

Amphenol's data communications fiber optic LC small form factor (SFF) connectors utilize the familiar RJ-45 latching mechanism. The LC connector is almost half the size of the popular SC connector, providing great space savings in the network. With accelerated growth demanding greater bandwidth in less physical space, LC connectors have emerged as a viable solution for high density frames and patch panels.

Amphenol's LC connectors are a high density low cost solution without any sacrifice of performance. The Amphenol LC connectors are compliant to the EIA/TIA-604 and IEC 61754.



Features/Benefits

- Easy RJ45 coupling mechanism enables quick installation and the audible click signifies when connector is locked in place
- Pull proof design prevents signal interruption
- Small form factor size enables increased density compared to standard connectors
- Duplex version utilizes a removable flexible clip providing a float between channels A and B
- Singlemode and multimode versions
- Available with 900µm, 900µm Behind the Wall (BTW), Short, 1.6/2.0mm, or 3.0mm boots
- Multiple boot color options
- Angled boots also available (50 degree, 90 degree, and flexible boot from 0 to 90 degree)

Specifications

Insertion Loss: $\leq 0.15\text{dB}$ typical, singlemode
 $\leq 0.25\text{dB}$ typical, multimode

Return Loss: Ultra (UPC) $\leq -55\text{dB}^*$

Durability: $< 0.2\text{dB}$ change, 500mating cycles

Temperature: $< 0.3\text{dB}$ change, -40 to $+85^\circ\text{C}$

Intermateability:

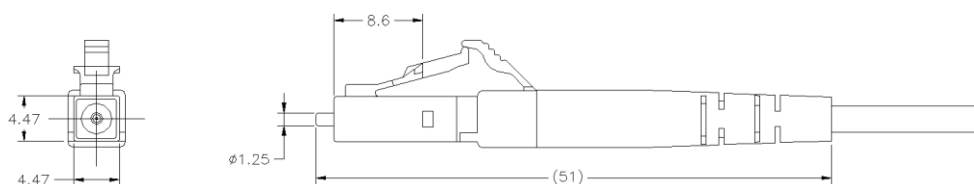
The Amphenol LC Connectors are mechanically and optically intermateable with industry standard LC connectors and adapters and conform to TIA/EIA, IEC, and Telcordia specifications.

*Performance is polish dependent

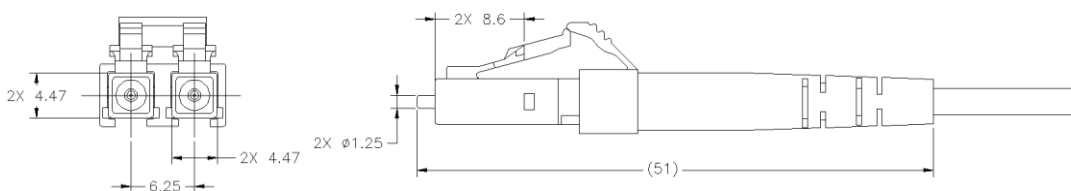
LC Connector Ordering Information*

| LC Simplex Connectors | | Recommended Cable Diameter | Body / Clip | Boot |
|-----------------------|--|----------------------------|-------------|----------------|
| Part # | Description | | | |
| 956-332-500314 | LC Simplex Connector, Multimode, 127µm Zirconia Ferrule | 3.0mm | Beige | Standard White |
| 956-331-590314 | LC Simplex Connector, Singlemode, 125.5µm Zirconia Ferrule | 3.0mm | Blue | Standard White |
| 956-332-500214 | LC Simplex Connector, Multimode, 127µm Zirconia Ferrule | 1.6/2.0mm | Beige | Standard White |
| 956-334-500214 | LC Simplex Connector, Multimode, 127µm Zirconia Ferrule | 1.6/2.0mm | Black | Standard White |
| 956-331-590214 | LC Simplex Connector, Singlemode, 125.5µm Zirconia Ferrule | 1.6/2.0mm | Blue | Standard White |
| 956-342-500924 | LC Simplex BTW Connector, Multimode, 127µm Zirconia Ferrule | 900µm | (BTW) Beige | 900µm White |
| 956-341-590924 | LC Simplex BTW Connector, Singlemode, 125.5µm Zirconia Ferrule | 900µm | (BTW) Blue | 900µm w hite |
| LC Duplex Connectors | | Recommended Cable Diameter | Body / Clip | Boot |
| Part # | Description | | | |
| 956-322-502314 | LC Duplex Connector, Multimode, 127µm Zirconia Ferrule | 3.0mm | Beige | Standard White |
| 956-321-592314 | LC Duplex Connector, Singlemode, 125.5µm Zirconia Ferrule | 3.0mm | Blue | Standard White |
| 956-322-502214 | LC Duplex Connector, Multimode, 127µm Zirconia Ferrule | 1.6/2.0mm | Beige | Standard White |
| 956-324-502214 | LC Duplex Connector, Multimode, 127µm Zirconia Ferrule | 1.6/2.0mm | Black | Standard White |
| 956-321-592214 | LC Duplex Connector, Singlemode, 125.5µm Zirconia Ferrule | 1.6/2.0mm | Blue | Standard White |
| 956-312-502924 | LC Duplex Connector, Multimode, 127µm Zirconia Ferrule | 1.6/2.0mm | Beige | 900µm White |
| 956-311-592924 | LC Duplex Connector, Singlemode, 125.5µm Zirconia Ferrule | 1.6/2.0mm | Blue | 900µm w hite |

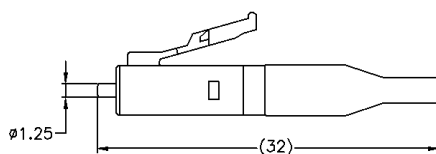
*Please contact Amphenol for other configurations



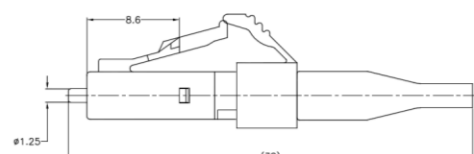
LC Simplex Connector with 1.6/2.0mm Boot



LC Duplex Connector with 1.6/2.0mm Boots



LC Simplex Behind the Wall (BTW) Connector with 900µm Boot



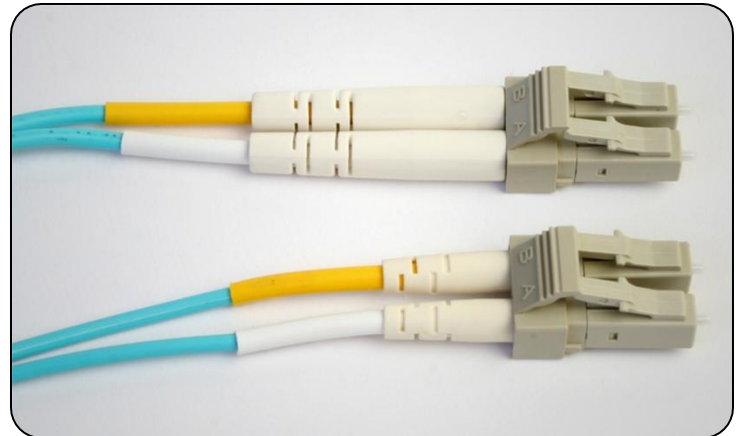
LC Duplex Connector with 900µm Boot

Amphenol
FIBER OPTIC PRODUCTS

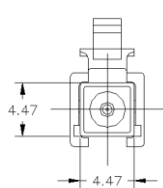
www.amphenol-fiberoptics.com
sales@amphenol-fiberoptics.com
Customer Service 800-944-6446

Micro LC Connectors

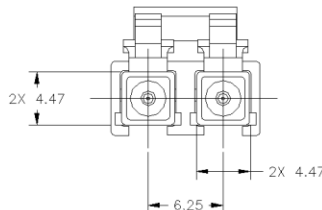
- Offers all of the benefits of the Amphenol LC connector, but with the added feature of a shorter length for jacketed cable
- Short LC connector with a short boot
- Length from tip of ferrule to end of boot is 36mm instead of the standard 51mm
- One of the shortest LC connectors for jacketed cable on the market
- Singlemode and multimode versions
- Simplex and duplex versions with removable clips
- Multiple boot color options available
- Angled boots also available (50 and 90 degree)



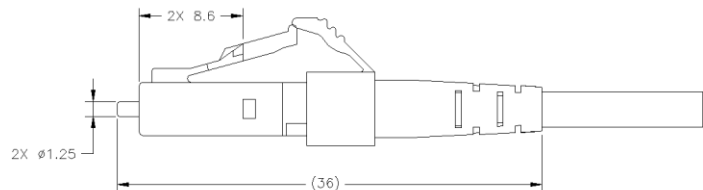
Micro LC connector as compared to standard LC connector



Simplex



Duplex



Micro LC Connector
with 1.6/2.0mm Short Boot

Micro LC Connector Ordering Information*

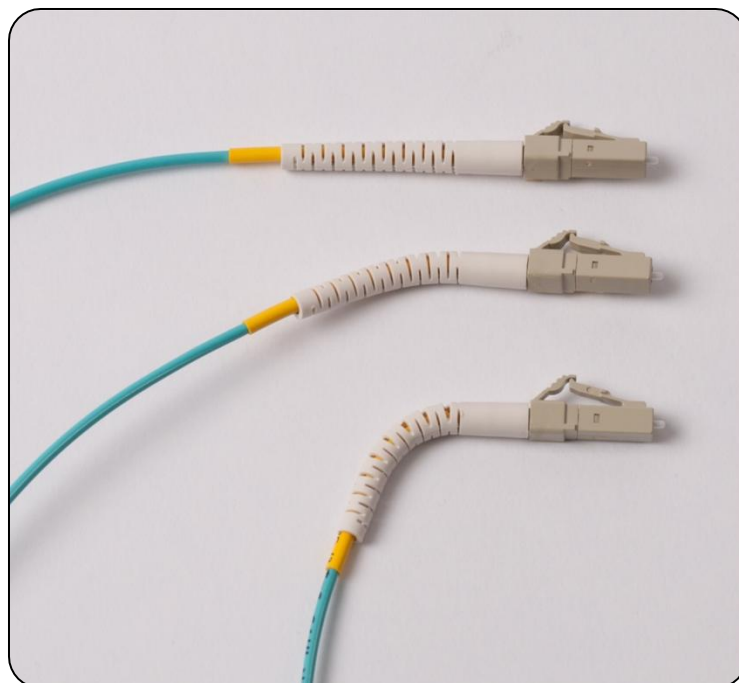
| LC Simplex Connectors | | Recommended Cable Diameter | Body / Clip | Boot |
|-----------------------|--|----------------------------|-------------|-------------|
| Part # | Description | | | |
| 956-302-500304 | LC Micro Simplex Connector, Multimode, 127µm Zirconia Ferrule | 3.0mm | Beige | Short White |
| 956-301-590304 | LC Micro Simplex Connector, Singlemode, 125.5µm Zirconia Ferrule | 3.0mm | Blue | Short White |
| 956-302-500204 | LC Micro Simplex Connector, Multimode, 127µm Zirconia Ferrule | 1.6/2.0mm | Beige | Short White |
| 956-301-590204 | LC Micro Simplex Connector, Singlemode, 125.5µm Zirconia Ferrule | 1.6/2.0mm | Blue | Short White |
| LC Duplex Connectors | | Recommended Cable Diameter | Body / Clip | Boot |
| Part # | Description | | | |
| 956-302-502304 | LC Micro Duplex Connector, Multimode, 127µm Zirconia Ferrule | 3.0mm | Beige | Short White |
| 956-301-592304 | LC Micro Duplex Connector, Singlemode, 125.5µm Zirconia Ferrule | 3.0mm | Blue | Short White |
| 956-302-502204 | LC Micro Duplex Connector, Multimode, 127µm Zirconia Ferrule | 1.6/2.0mm | Beige | Short White |
| 956-301-592204 | LC Micro Duplex Connector, Singlemode, 125.5µm Zirconia Ferrule | 1.6/2.0mm | Blue | Short White |

*Please contact Amphenol for other configurations

LC Connectors with Flexible Boot

Amphenol's LC connector flexible strain relief boots simplify cable routing in high density panels. The installer can angle the flexible boot on each individual cable to any desired direction to help neatly dress the fibers and improve cable routing. When high density panels are fully populated, the flexible boot is a great benefit over rigid boots for cable routing.

Amphenol's LC connectors are a high density low cost solution without any sacrifice of performance. The Amphenol LC connectors are compliant to the EIA/TIA-604 and IEC 61754 industry standards.



Features/ Benefits

- Flexible strain relief boot protects the cable against signal loss in tight spaces
- Improves cable routing on high density panels
- Flexible boot is bendable in any direction
- Angle can be adjusted from 0 degree to 90 degrees while in the field
- RoHS compliant

Common Specifications

Insertion Loss: $\leq 0.15\text{dB}$ typical, singlemode
 $\leq 0.25\text{dB}$ typical, multimode

Return Loss: Ultra (UPC) $\leq -55\text{dB}^*$

*Performance is polish dependent

LC Connector with Flex Boot Ordering Information*

| LC Simplex Connectors | | Recommended Cable Diameter | Body / Clip | Boot/Color |
|-----------------------|--|----------------------------|-------------|----------------|
| Part # | Description | | | |
| 956-332-5002F4 | LC Simplex Connector, Multimode, 127 μm Zirconia Ferrule | 1.6/2.0mm | Beige | Flexible White |
| 956-331-5902F4 | LC Simplex Connector, Singlemode, 125.5 μm Zirconia Ferrule | 1.6/2.0mm | Blue | Flexible White |
| LC Duplex Connectors | | Recommended Cable Diameter | Body / Clip | Boot/Color |
| Part # | Description | | | |
| 956-322-5022F4 | LC Duplex Connector, Multimode, 127 μm Zirconia Ferrule | 1.6/2.0mm | Beige | Flexible White |
| 956-321-5922F4 | LC Duplex Connector, Singlemode, 125.5 μm Zirconia Ferrule | 1.6/2.0mm | Blue | Flexible White |

*Please contact Amphenol for other configurations

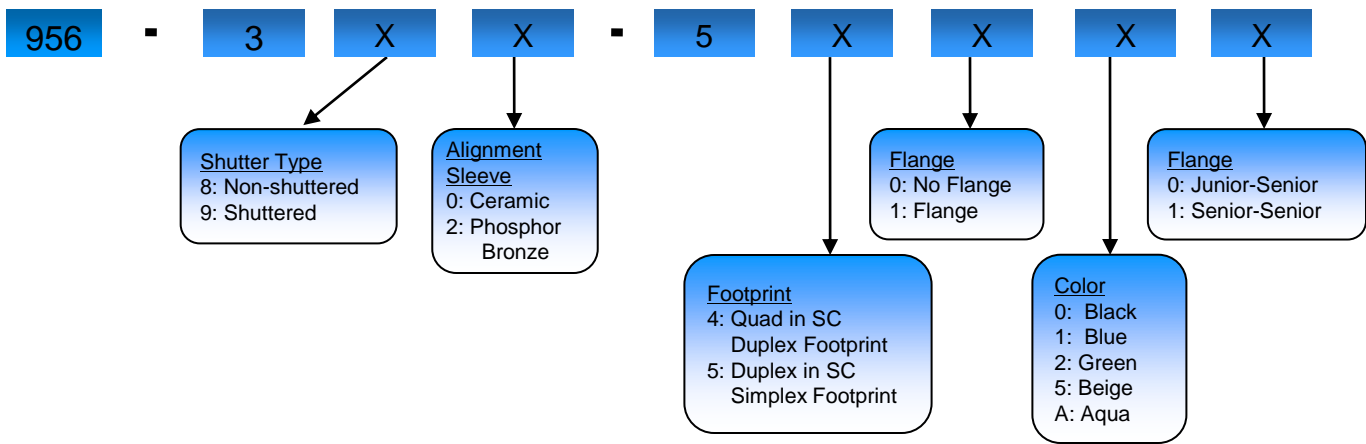
Amphenol
FIBER OPTIC PRODUCTS

www.amphenol-fiberoptics.com
sales@amphenol-fiberoptics.com
 Customer Service 800-944-6446

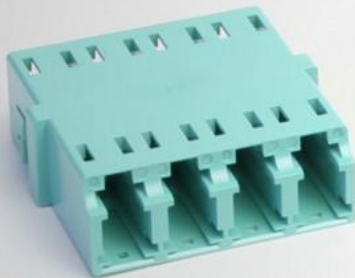
Amphenol LC Adapters

Amphenol's complete range of LC adapter options provide the perfect solution for your high density network needs. The one-piece design is more durable than the typical two-piece design. The adapters meet EIA/TIA, IEC, and Telcordia standards. Amphenol patented* internal shutters are available on most types of adapters.

Ordering Information



LC Multimode Quad Adapter



Contact Amphenol for LC duplex adapter with standard LC footprint options



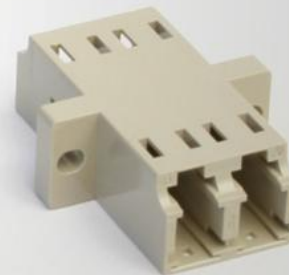
LC APC duplex adapter



Amphenol patented* internal shutter option



LC Multimode duplex adapter



*US Patent No. 6,688,780

Amphenol
FIBER OPTIC PRODUCTS

www.amphenol-fiberoptics.com
sales@amphenol-fiberoptics.com
Customer Service 800-944-6446