

# RED INDICATES ORIGINAL

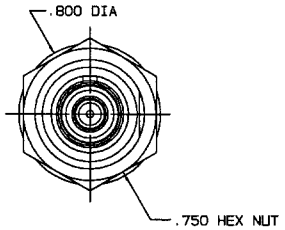
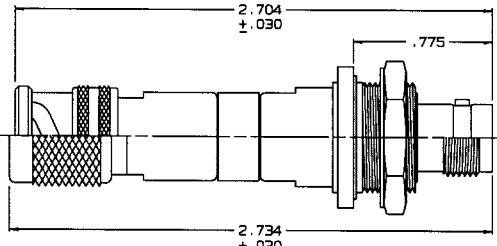
DWG SIZE C  
 DATA CONTAINED IN THIS DOCUMENT IS PROPRIETARY TO TROMPETER ELECTRONICS, INC. AND SHALL NOT BE DISCLOSED, COPIED OR USED FOR REPRODUCTION OR MANUFACTURE WITHOUT EXPRESS WRITTEN PERMISSION.

REV		ED	DESCRIPTION	DWN	APPROVED	DATE
8		13568	ADDED -199 AND UPDATED SCHEMATIC SCHEDULE ON THE DASH NUMBER TABLE; ALSO UPDATED THE SCHEMATIC CHART; SEE ECO	DKC	<i>mg</i>	8/13/00

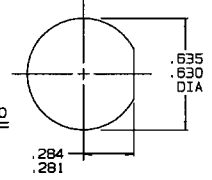
P2 CONN TYPE	FIG NO	P1 CONN TYPE																														
		PL74						PL75						PL75FL						PL375						PL73 $\Delta$						
		SCHEMATICS																														
		A1	A2	A3	A4	A5	A6	A1	A2	A3	A4	A5	A6	A1	A2	A3	A4	A5	A6	A1	A2	A3	A4	A5	A6	A1	A2	A3	A4	A5	A6	
DASH NUMBERS																																
BJ74	1A	-1	-2	-3	-4	-5	-6	-7	-8	-9	-10	-11	-12	-13	-14	-15	-16	-17	-18	-19	-20	-21	-22	-23	-24							
BJ74TL	1A	-25	-26	-27	-28	-29	-30	-31	-32	-33	-34	-35	-36	-37	-38	-39	-40	-41	-42	-43	-44	-45	-46	-47	-48							
BJ74FL	1A	-49	-50	-51	-52	-53	-54	-55	-56	-57	-58	-59	-60	-61	-62	-63	-64	-65	-66	-67	-68	-69	-70	-71	-72							
BJ374	1B	-73	-74	-75	-76	-77	-78	-79	-80	-81	-82	-83	-84	-85	-86	-87	-88	-89	-90	-91	-92	-93	-94	-95	-96							
BJ79	2A	-97	-98	-99	-100	-101	-102	-103	-104	-105	-106	-107	-108	-199	-109	-110	-111	-112	-113	-114	-115	-116	-117	-118	-119	-120	-193	-194	-195	-196	-197	-198
BJ79TL	2A	-121	-122	-123	-124	-125	-126	-127	-128	-129	-130	-131	-132	-133	-134	-135	-136	-137	-138	-139	-140	-141	-142	-143	-144							
BJ79FL	2A	-145	-146	-147	-148	-149	-150	-151	-152	-153	-154	-155	-156	-157	-158	-159	-160	-161	-162	-163	-164	-165	-166	-167	-168							
BJ379	2B	-169	-170	-171	-172	-173	-174	-175	-176	-177	-178	-179	-180	-181	-182	-183	-184	-185	-186	-187	-188	-189	-190	-191	-192							

INCH	MM
.005	0.13
.030	0.76
.109	2.77
.140	3.56
.218	5.54
.221	5.61
.281	7.14
.284	7.21
.505	12.83
.510	12.95
.563	14.30
.630	16.00
.635	16.13
.687	17.45
.750	19.05
.775	19.69
.800	20.32
2.654	67.41
2.704	68.68
2.734	69.44

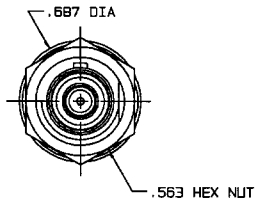
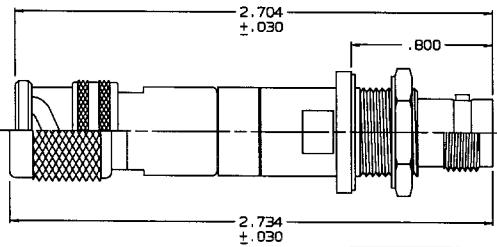
-1 SHOWN  
 CONN P1  
 FIG 1A



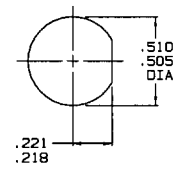
RECOMMENDED  
 PANEL CUTOUT  
 MAX PANEL THICKNESS .140



-91 SHOWN  
 CONN P1  
 FIG 1B



RECOMMENDED  
 PANEL CUTOUT  
 MAX PANEL THICKNESS .109

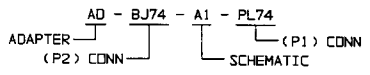


-97 SHOWN  
 CONN P1  
 FIG 2A

-187 SHOWN  
 CONN P1  
 FIG 2B

$\Delta$  FOR -193 THRU -198, VIEW NOT SHOWN. TOTAL LENGTH SHALL BE 2.654 ±.030

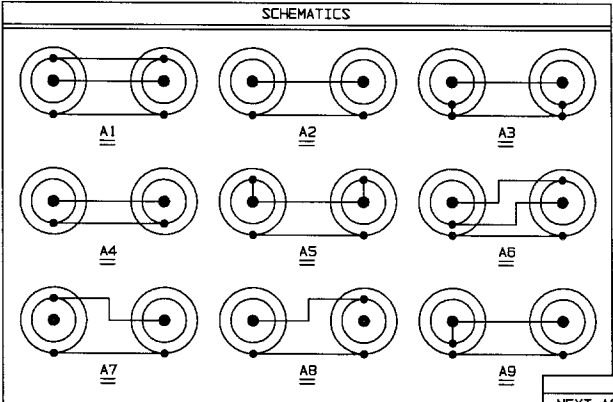
4. EXAMPLE OF COMPLETE MODEL NO:



3. WITHIN & BETWEEN SERIES ADAPTER, MALE CONCENTRIC TWINAX/TRIAX 2/3/4-LUG & THREADED BAYONET PLUG TO FEMALE 2/3/4-LUG & THREADED, INSULATED & NONINSULATED BULKHEAD MOUNT JACK

2. FINISH: TFS-1A (NICKEL)

1. ALL DIMENSIONS ARE REFERENCED IN INCHES



QTY	DESCRIPTION	PART NUMBER	ITEM
TOL UNLESS SPECIFIED .XX ± .XXX ± .005 .XXXX ANGLE	<b>TROMPETER ELECTRONICS, INC.</b>	ADAPTERS: MALE *70* SERIES TO *70* SERIES BULKHEAD MOUNT JACKS	
DWN DKC 7-26-00	MATERIAL	CODE IDENT 14949	DRAWING NO. 22-06
CHK J.R.B-F00	ENGR	DATE 3-20-85	REV B
APPR <i>mg</i>	SCALE 2/1	DATE 3-20-85	SHEET 1C

NEXT ASSY