

PLEASE CHECK WWW.MOLEX.COM FOR LATEST PART INFORMATION

Part Number: [0919990482](#)
Status: **Active**
Overview: [RAST Connector System](#)
Description: Appli-Mate RAST 5 Header, Vertical, 2 Circuits, Tin (Sn) Plating, Glow-Wire Capable

Documents:

| | |
|--------------------------------|--|
| Drawing (PDF) | Product Specification PS-99020-0037-001 (PDF) |
| 3D Model | Packaging Specification PK-90858-001-001 (PDF) |
| 3D Model (PDF) | RoHS Certificate of Compliance (PDF) |

Agency Certification

| | |
|-----|---------|
| CSA | LR19980 |
| UL | E29179 |

Application tooling part link

| | |
|-------------------------------|-------------|
| Application Tooling Part Link | 216658-0200 |
|-------------------------------|-------------|

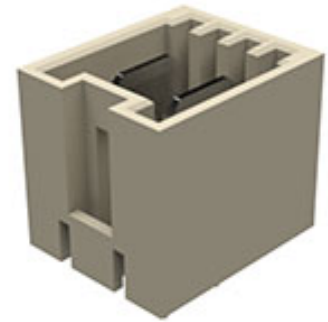
General

| | |
|----------------|---|
| Product Family | PCB Headers |
| Series | 91999 |
| Application | Power, Wire-to-Board |
| Comments | This Molex product is manufactured from material that has the following ratings, tested by independent agencies: a) A Glow Wire Ignition Temperature (GWIT) of at least 775 deg C per IEC 60695-2-13. b) A Glow Wire Flammability Index (GWFI) above 850 deg C per IEC 60695-2-12 and hence complies with the requirements set out in the International Standard IEC 60335-1 5th edition - household and similar electrical appliances - safety, section 30 Resistance to heat and fire. The customers using this product must determine its suitability for use in their particular application through testing or other acceptable means as described in end-product glow-wire flammability test standard IEC 60695-2-11 and any applicable product end-use standard(s). If it is determined during the customer's evaluation of suitability, that higher performance is required, please contact Molex for possible product options. |

| | |
|----------------|---------------------------------------|
| Component Type | PCB Header |
| Overview | RAST Connector System |
| Product Name | RAST 5 |
| Taxonomy | PCB Headers and Receptacles |
| UPC | 800756746951 |

Physical

| | |
|--------------------------------|---------|
| Breakaway | No |
| Circuits (Loaded) | 2 |
| Circuits (maximum) | 2 |
| Color - Resin | Natural |
| Durability (mating cycles max) | 10 |
| First Mate / Last Break | No |
| Flammability | 94V-0 |
| Glow-Wire Capable | Yes |
| Guide to Mating Part | No |
| Keying to Mating Part | Yes |
| Lock to Mating Part | Yes |



Series image - Reference only

EU ELV

Not Relevant

EU RoHS

Compliant

REACH SVHC

Not Contained per -
D(2022)9120-DC (17
Jan 2023)

Halogen-Free

Status

Not Low-Halogen

For more information, please visit [Contact US](#)

China ROHS

ELV

RoHS Phthalates

China RoHS

Green Image

Not Relevant

Not Contained

Search Parts in this Series

[91999 Series](#)

Mates With

Appli-Mate RAST 5 IDT Housing [91778](#) ,
[91779](#)

Use With

RAST Standard Interface

Application Tooling | [FAQ](#)

Tooling specifications and manuals are found by selecting the products below. Crimp Height Specifications are then contained in the Application Tooling Specification document.

Global

Description

Product #

RAST 5 Power
Semi-Automatic IDC
Machine

[2166580200](#)

| | |
|--------------------------------|----------------|
| Material - Metal | Brass |
| Material - Plating Mating | Tin |
| Material - Plating Termination | Nickel |
| Material - Resin | Nylon |
| Net Weight | 2.700/g |
| Number of Rows | 1 |
| Orientation | Vertical |
| PC Tail Length | 3.90mm |
| PCB Locator | Yes |
| PCB Retention | None |
| PCB Thickness - Recommended | 1.40mm |
| Packaging Type | Bag |
| Pitch - Mating Interface | 5.00mm |
| Pitch - Termination Interface | 5.00mm |
| Plating min - Mating | 2.032µm |
| Polarized to PCB | Yes |
| Shrouded | Fully |
| Stackable | No |
| Surface Mount Compatible (SMC) | No |
| Temperature Range - Operating | -20° to +120°C |
| Termination Interface: Style | Through Hole |

Electrical

| | |
|-------------------------------|---------|
| Current - Maximum per Contact | 16.0A |
| Voltage - Maximum | 250V AC |

Material Info

| | |
|--------------------|---------------|
| Engineering Number | WITH ZYTEL RM |
|--------------------|---------------|

Reference - Drawing Numbers

| | |
|-------------------------|-------------------|
| Packaging Specification | PK-90858-001-001 |
| Product Specification | PS-99020-0037-001 |
| Sales Drawing | 919990001-000 |

This document was generated on 03/16/2023

PLEASE CHECK WWW.MOLEX.COM FOR LATEST PART INFORMATION